

**COMPETENCE BASED EDUCATION**

**SENIOR SCHOOL CURRICULUM**



**— GRADE 10 —**

**APRIL 2026**

*Holiday Assignments*

**NAME:** \_\_\_\_\_

**SCHOOL:** \_\_\_\_\_

**ASSESSMENT NUMBER:** \_\_\_\_\_

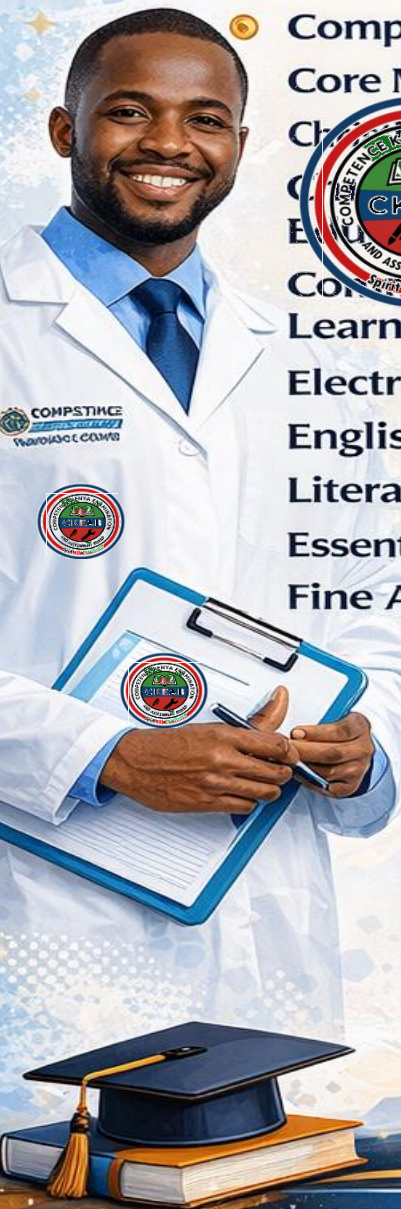
**SIGNATURE:** \_\_\_\_\_

*... Striving for Excellence Through Competence ...*

**AD AUTHORS: COMPETENCE EDUCATION GROUP**

# THIS HOMEWORK BOOK CONTAINS THE FOLLOWING SUBJECTS:

- Applied Agriculture
- Aviation Technology
- Biology
- Building Construction
- Business Studies
- Chemistry
- Computer Science
- Core Mathematics
- Christian Religious Education
- Christian Religious Education
- Community Service Learning
- Electrical Technology
- English
- Literature
- Essential Mathematics
- Fine Arts
- Home Science
- Hindu Religious Education
- Information Communication Technology
- Islamic Religious Education
- Applied Agriculture
- Aviation Technology
- Biology
- Building Construction Technology
- Business Studies
- Chemistry
- Computer Science
- Core Mathematics
- Electrical Technology
- English
- Literature
- Essential Mathematics
- Fine Arts
- French
- General Science
- Geography
- German
- History and Citizenship
- Kiswahili Lugha
- Fasihi ya Kiswahili
- Mandarin
- Marine Technology
- Media Technology
- Music and Dance
- Physical Education
- Physics



**COMPETENCE EDUCATION GROUP**

**SENIOR SCHOOL**



April 2026

Time: 2 Hours

Code: CKEAB 004



**LEARNER'S DETAILS**

Name: \_\_\_\_\_ School: \_\_\_\_\_

Assessment Number: \_\_\_\_\_ School Code: \_\_\_\_\_ Date: \_\_\_\_\_ Signature: \_\_\_\_\_

**INSTRUCTIONS TO LEARNERS**

- i. Answer all questions in the spaces provided.
- ii. Read each question carefully before responding.
- iii. Use blue or black ink. Use pencil only for diagrams.
- iv. Calculations must be clearly shown where applicable.

**Questions**

- 1. a) The natural process by which soil particles are removed by water or wind is called \_\_\_\_\_.
- b) The uppermost layer of soil rich in organic matter is known as \_\_\_\_\_.
- c) A legal agreement allowing temporary use of land for farming is called \_\_\_\_\_.
- d) The practice of growing different crops on the same piece of land in seasons is known as \_\_\_\_\_.
- e) The removal of excess water from farmland is referred to as \_\_\_\_\_.

2. Match the agricultural practice in Column A with its correct description in Column B.

Column A	Column B
(i) Mulching	A. Growing legumes to improve soil nitrogen
(ii) Crop rotation	B. Covering soil surface with plant materials
(iii) Green manuring	C. Breaking large soil clods
(iv) Harrowing	D. Alternating crops in seasons
(v) Leasing	E. Renting land for a specific period



3. a) State FOUR characteristics of fertile soil. (4 marks)

- i. \_\_\_\_\_.
- ii. \_\_\_\_\_.
- iii. \_\_\_\_\_.
- iv. \_\_\_\_\_.

b) Give THREE advantages of using certified seeds in crop production. (3 marks)

- i. \_\_\_\_\_.
- ii. \_\_\_\_\_.
- iii. \_\_\_\_\_.

c) Outline THREE signs that indicate nutrient deficiency in crops. (3 marks)

- i. \_\_\_\_\_.
- ii. \_\_\_\_\_.
- iii. \_\_\_\_\_.

4. A youth group in Nakuru County intends to start commercial spinach farming.

a) Explain THREE methods they can use to acquire farmland legally in Kenya. (6 marks)

- i. \_\_\_\_\_.
- ii. \_\_\_\_\_.
- iii. \_\_\_\_\_.

b) Analyse TWO risks of farming on land with poor drainage. (4 marks)

- i. \_\_\_\_\_.
- ii. \_\_\_\_\_.

5. Learners carried out a soil sedimentation test and observed three distinct layers after shaking soil in water.

a) Name the THREE soil particles likely observed from bottom to top. (3 marks)

- i. \_\_\_\_\_.
- ii. \_\_\_\_\_.
- iii. \_\_\_\_\_.



b) Explain how soil texture influences water retention. (4 marks)

- i. \_\_\_\_\_
- ii. \_\_\_\_\_
- iii. \_\_\_\_\_

c) Suggest THREE ways of improving sandy soil for vegetable farming. (3 marks)

- i. \_\_\_\_\_
- ii. \_\_\_\_\_
- iii. \_\_\_\_\_

6. a) Compare minimum tillage and conventional tillage under the following headings: (6 marks)

Aspect	Minimum Tillage	Conventional Tillage
Soil disturbance		
Cost implication		
Effect on erosion		

b) Propose TWO mechanical and TWO biological methods of controlling soil erosion. (4 marks)

Mechanical:

- i. \_\_\_\_\_
- ii. \_\_\_\_\_

Biological:

- i. \_\_\_\_\_
- ii. \_\_\_\_\_

7. a) Describe the step-by-step procedure of establishing a vegetable nursery bed. (6 marks)

- i. \_\_\_\_\_
- ii. \_\_\_\_\_
- iii. \_\_\_\_\_
- iv. \_\_\_\_\_
- v. \_\_\_\_\_
- vii. \_\_\_\_\_



b) Explain FOUR post-transplanting management practices carried out in the main field. (4 marks)

- i. \_\_\_\_\_
- ii. \_\_\_\_\_
- iii. \_\_\_\_\_
- iv. \_\_\_\_\_

8. a) Define sustainable agriculture. (2 marks)

\_\_\_\_\_

\_\_\_\_\_

b) Discuss FOUR benefits of practicing sustainable agriculture in Kenya. (4 marks)

- i. \_\_\_\_\_
- ii. \_\_\_\_\_
- iii. \_\_\_\_\_
- iv. \_\_\_\_\_
- ii. \_\_\_\_\_
- iii. \_\_\_\_\_

9. A farmer applied the following fertilizers on maize:

Fertilizer Type	Time of Application	Purpose
DAP	Planting time	Root development
CAN	4 weeks after planting	Leaf growth

a) Identify the type of fertilizer applied at planting. (1 mark)

\_\_\_\_\_

b) Explain why top dressing is done weeks after planting. (3 marks)

\_\_\_\_\_

\_\_\_\_\_

\_\_\_\_\_



c) State THREE precautions observed when applying fertilizers. (3 marks)

- i. \_\_\_\_\_.
- ii. \_\_\_\_\_.
- iii. \_\_\_\_\_.

d) Calculate the total fertilizer required for 2 acres if 50 kg is used per acre. (3 marks)

10. Mention four ethical ways in which an individual can acquire agricultural land in Kenya. (4 marks)

- i. \_\_\_\_\_.
- ii. \_\_\_\_\_.
- iii. \_\_\_\_\_.
- iv. \_\_\_\_\_.





April 2026

Time: 2 Hours

Code: CKEAB 004



**LEARNER'S DETAILS**

Name: \_\_\_\_\_ School: \_\_\_\_\_

Assessment Number: \_\_\_\_\_ School Code: \_\_\_\_\_ Date: \_\_\_\_\_ Signature: \_\_\_\_\_

**INSTRUCTIONS TO LEARNERS**

- i. Attempt all questions.
- ii. Write clearly and number your responses correctly.
- iii. Diagrams must be well-labelled.
- iv. Calculators are not allowed.

**SECTION A: STRUCTURED QUESTIONS**

1. **Define** an injury caused by electrical current and **give two ways to prevent it**.

**Definition**

<b>Injury</b>	
---------------	--

Ways of preventing electrical injuries

- i. \_\_\_\_\_
- ii. \_\_\_\_\_
- iii. \_\_\_\_\_

2. **Name** the part of an airport where aircraft are **parked and maintained**.

\_\_\_\_\_

3. **Explain** why helicopters can hover in the air while planes cannot.

\_\_\_\_\_  
\_\_\_\_\_  
\_\_\_\_\_



4. **Outline** three common types of **safety signs** used in workplaces or public areas.

- a. \_\_\_\_\_.
- b. \_\_\_\_\_.
- c. \_\_\_\_\_.

5. **List** two pioneers of **early aviation** and state the contribution of each.

- a. \_\_\_\_\_.
- b. \_\_\_\_\_.
- c. \_\_\_\_\_.

6. **State** what the following **safety sign** represents.



\_\_\_\_\_.

7. **Match** the following aviation terms with their correct definitions:

Term	Definition
a) Runway	i) Aircraft take-off and landing strip
b) Apron	ii) Area for servicing and parking aircraft
c) Terminal	iii) Building where passengers check in and board
d) Hangar	iv) Shelter for storing aircraft

8. **Give** two advantages of **helicopter flight over fixed-wing aircraft** in emergency rescue operations.

- a. \_\_\_\_\_.
- b. \_\_\_\_\_.
- c. \_\_\_\_\_.

9. **State** the major differences between **lighter-than-air and heavier-than-air aircraft**.

Lighter than air aircraft	Heavier than air aircraft



10. The following are descriptions of aircraft components. Name them:

- a) Rotating part that generates lift in a helicopter. \_\_\_\_\_.
- b) Fixed surface used for lift in airplanes. \_\_\_\_\_.
- c) Engine that provides thrust in a jet plane. \_\_\_\_\_.

11. Mention three types of **injuries** that can occur in an aviation environment.

- a. \_\_\_\_\_.
- b. \_\_\_\_\_.
- c. \_\_\_\_\_.

12. Outline the steps a pilot takes **before take-off at an airport**.

- a. \_\_\_\_\_.
- b. \_\_\_\_\_.
- c. \_\_\_\_\_.
- d. \_\_\_\_\_.
- e. \_\_\_\_\_.
- f. \_\_\_\_\_.

13. Describe the function of an **airport terminal**.

- a. \_\_\_\_\_.
- b. \_\_\_\_\_.
- c. \_\_\_\_\_.

14. Match the following aircraft types with their uses:

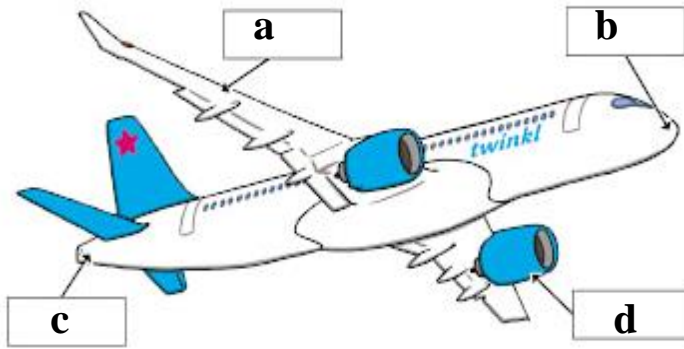
Aircraft Type	Use
a) Glider	i) Military reconnaissance or sports
b) Cargo plane	ii) Transporting goods over long distances
c) Passenger plane	iii) Carrying people on scheduled flights
d) Helicopter	iv) Rescue and emergency operations

18. Give one difference between **thermal injury** and **mechanical injury**.

Thermal injury	Mechanical injury



19. Below is a simplified sketch of an airplane.



a) Label FOUR main parts of the aircraft. (4 marks)

- a. \_\_\_\_\_.
- b. \_\_\_\_\_.
- c. \_\_\_\_\_.

b) State ONE function of the tail section. (1 mark)

\_\_\_\_\_

20. Indicate whether the statement is TRUE or FALSE and give a brief reason.

a) All aircraft require engines to fly.

Answer: \_\_\_\_\_

Reason: \_\_\_\_\_

b) A runway is used for aircraft maintenance.

Answer: \_\_\_\_\_

Reason: \_\_\_\_\_

c) Personal protective equipment reduces workplace accidents.

Answer: \_\_\_\_\_

Reason: \_\_\_\_\_

d) Balloons demonstrate lighter-than-air flight.

Answer: \_\_\_\_\_

Reason: \_\_\_\_\_

e) Aviation safety rules apply only to pilots.

Answer: \_\_\_\_\_

Reason: \_\_\_\_\_



21. Match Column A with Column B.

Column A	Column B
(i) Hangar	A. Aircraft guidance
(ii) Control tower	B. Aircraft storage
(iii) Runway	C. Fire emergency response
(iv) First aid kit	D. Take-off and landing
(v) Fire extinguisher	E. Emergency treatment

SECTION B: (25 MARKS)

22. a) Differentiate between fixed-wing and rotary-wing aircraft. (4 marks)

Fixed wing aircraft	Rotary wing aircraft

b) Give TWO examples of each category. (4 marks)

Fixed wing aircraft	Rotary wing aircraft

23. A student working in an aviation workshop fails to wear safety gloves and sustains a minor cut.

a) Classify the injury according to severity. (2 marks)

\_\_\_\_\_

b) Outline FOUR steps of first aid for the injury. (4 marks)

- i. \_\_\_\_\_.
- ii. \_\_\_\_\_.
- iii. \_\_\_\_\_.
- iv. \_\_\_\_\_.

c) State THREE workshop safety rules that were ignored. (3 marks)

- i. \_\_\_\_\_.
- ii. \_\_\_\_\_.
- iii. \_\_\_\_\_.



24. a) Identify FOUR aviation-related careers. (4 marks)

- i. \_\_\_\_\_.
- ii. \_\_\_\_\_.
- iii. \_\_\_\_\_.
- iv. \_\_\_\_\_.

b) Explain TWO responsibilities of an air traffic controller. (4 marks)

- i. \_\_\_\_\_.
- ii. \_\_\_\_\_.

**SECTION C: (25 MARKS)**

25. History and Development of Aviation (10 marks)

a) Describe THREE major milestones in aviation development. (6 marks)

- i. \_\_\_\_\_.
- ii. \_\_\_\_\_.
- iii. \_\_\_\_\_.

b) Analyse how modern aircraft differ from early flying machines. (4 marks)

- i. \_\_\_\_\_.
- ii. \_\_\_\_\_.
- iii. \_\_\_\_\_.
- iv. \_\_\_\_\_.

26. During a school visit to a major airport, learners observed strict security checks and restricted movement zones.

a) Describe THREE operational areas of an airport. (9 marks)

- i. \_\_\_\_\_.
- ii. \_\_\_\_\_.
- iii. \_\_\_\_\_.
- iv. \_\_\_\_\_.

b) Explain THREE safety rules that visitors must observe in airport restricted areas. (6 marks)

- i. \_\_\_\_\_.
- ii. \_\_\_\_\_.
- iii. \_\_\_\_\_.
- iv. \_\_\_\_\_.





April 2026

Time: 2 Hours

Code: CKEAB 004



LEARNER'S DETAILS

Name: \_\_\_\_\_ School: \_\_\_\_\_

Assessment Number: \_\_\_\_\_ School Code: \_\_\_\_\_ Date: \_\_\_\_\_ Signature: \_\_\_\_\_

INSTRUCTIONS TO LEARNERS

- i. Answer all questions in the spaces provided.
- ii. All responses must be structured and clearly explained.
- iii. Use diagrams where required and label them correctly.
- iv. Write brief answers in Section A and detailed explanations in Section B.
- v. The total mark for this paper is 70.

SECTION A: (30 MARKS)

1. A rural community is facing increased cases of malaria, poor crop productivity, and contamination of drinking water.

a) Define the term Biology. (2 marks)

---



---

b) Explain THREE practical ways knowledge of Biology can help solve the problems faced by the community. (6 marks)

- i. \_\_\_\_\_
- ii. \_\_\_\_\_
- iii. \_\_\_\_\_
- iv. \_\_\_\_\_

2. a) Describe FOUR branches of Biology and state what each studies. (4 marks)

- i. \_\_\_\_\_
- ii. \_\_\_\_\_
- iii. \_\_\_\_\_
- iv. \_\_\_\_\_

b) For each branch identified above, suggest one related career. (4 marks)

BRANCH				
CAREER				



3. a) Outline THREE qualities of a good Biology researcher. (3 marks)

- i. \_\_\_\_\_.
- ii. \_\_\_\_\_.
- iii. \_\_\_\_\_.

b) Explain THREE ethical considerations that must be observed when conducting biological investigations involving living organisms. (3 marks)

- i. \_\_\_\_\_.
- ii. \_\_\_\_\_.
- iii. \_\_\_\_\_.

4. a) Describe FOUR general laboratory safety rules observed during Biology practical lessons. (4 marks)

- i. \_\_\_\_\_.
- ii. \_\_\_\_\_.
- iii. \_\_\_\_\_.
- iv. \_\_\_\_\_.

b) Explain TWO reasons why proper storage of biological specimens is important. (4 marks)

- i. \_\_\_\_\_.
- ii. \_\_\_\_\_.

**SECTION B: (20 MARKS)**

5. a) Draw and label a simple light microscope. (4 marks)



b) Describe the procedure for preparing a temporary slide of an onion epidermis. (4 marks)

- i. \_\_\_\_\_
- ii. \_\_\_\_\_
- iii. \_\_\_\_\_
- iv. \_\_\_\_\_

c) Explain TWO differences between magnification and resolution. (2 marks)

\_\_\_\_\_

\_\_\_\_\_

\_\_\_\_\_

6. a) Describe the process of wet preservation of an animal specimen. (4 marks)

- i. \_\_\_\_\_
- ii. \_\_\_\_\_
- iii. \_\_\_\_\_
- iv. \_\_\_\_\_

b) State FOUR details that must appear on a properly prepared specimen label. (4 marks)

- i. \_\_\_\_\_
- ii. \_\_\_\_\_
- iii. \_\_\_\_\_
- iv. \_\_\_\_\_

c) Explain TWO precautions observed during field collection of plant specimens. (2 marks)

- i. \_\_\_\_\_
- ii. \_\_\_\_\_

SECTION C: 20 MARKS)

7. a) Identify FOUR specialized plant cells and describe their functions. (4 marks)

- i. \_\_\_\_\_
- ii. \_\_\_\_\_
- iii. \_\_\_\_\_
- iv. \_\_\_\_\_

b) Identify FOUR specialized animal cells and describe their functions. (4 marks)

- i. \_\_\_\_\_
- ii. \_\_\_\_\_
- iii. \_\_\_\_\_
- iv. \_\_\_\_\_



c) Explain how structure relates to function in any ONE specialized cell. (2 marks)

**Specialized cell** \_\_\_\_\_

**Structural adaptations**

- i. \_\_\_\_\_.
- ii. \_\_\_\_\_.

8. a) Arrange the following in correct order from smallest to largest level of organization:

Organ, Tissue, Cell, Organ system, Organelle. (2 marks)

\_\_\_\_\_

\_\_\_\_\_

**b) Give an example of each**

Level of organization	Example
Organ	
Tissue	
Organ system	
Organelle	
Cell	

c) Explain the role of each of the following in a multicellular organism: (2 marks)

i) Tissue

\_\_\_\_\_.

\_\_\_\_\_.

ii) Organ

\_\_\_\_\_.

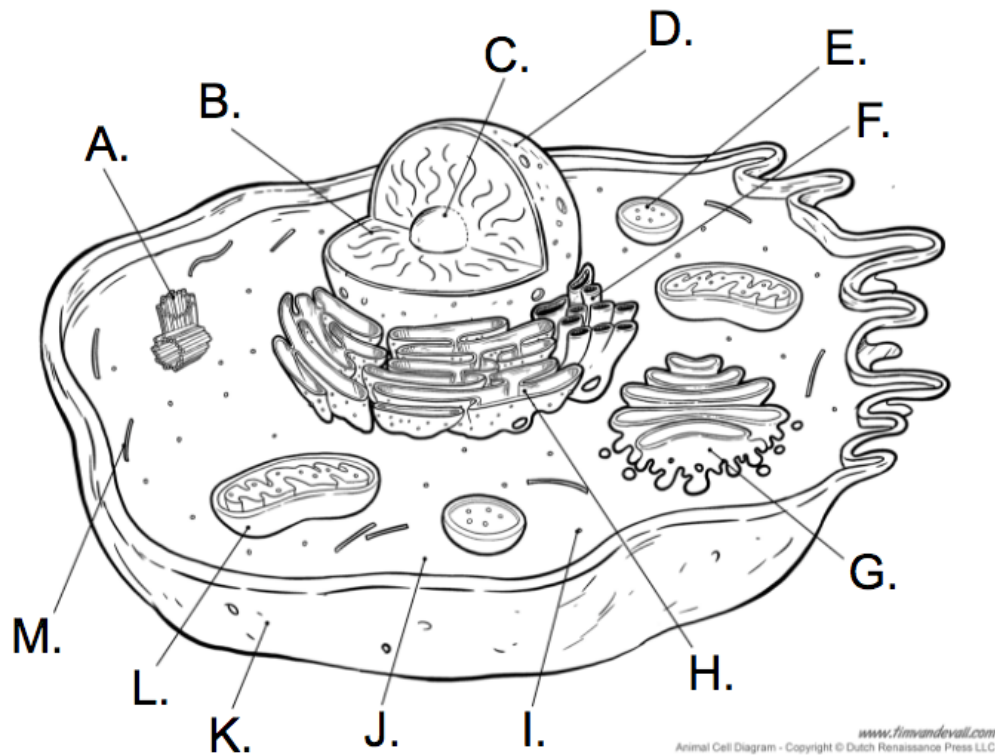
\_\_\_\_\_.

d) Describe how different organ systems work together to maintain life in humans. (2 marks)

- i. \_\_\_\_\_.
- ii. \_\_\_\_\_.



8. Name the parts of a cell labelled. (4 marks)



Part	Name
C	
D	
E	
F	
G	
H	
J	
K	
L	





April 2026

Time: 2 Hours

Code: CKEAB 004



LEARNER'S DETAILS

Name: \_\_\_\_\_ School: \_\_\_\_\_

Assessment Number: \_\_\_\_\_ School Code: \_\_\_\_\_ Date: \_\_\_\_\_ Signature: \_\_\_\_\_

INSTRUCTIONS TO LEARNERS

- i. Answer all questions in the spaces provided.
- ii. All responses must be structured and clearly explained.
- iii. Diagrams must be drawn neatly and labeled correctly.
- iv. Show all calculations where applicable.

SECTION A: (30 MARKS)

1. a) Define the term “building” as used in construction. (2 marks)

\_\_\_\_\_

\_\_\_\_\_

b) State TWO reasons why buildings are important in daily human life. (2 marks)

i. \_\_\_\_\_

ii. \_\_\_\_\_

c) Describe TWO ways buildings provide comfort and protection to occupants. (4 marks)

i. \_\_\_\_\_

ii. \_\_\_\_\_

2. a) Classify buildings according to their main function. (3 marks)

i. \_\_\_\_\_

ii. \_\_\_\_\_

iii. \_\_\_\_\_

b) Give ONE example for each category. (3 marks)

Category

Example

i. \_\_\_\_\_

ii. \_\_\_\_\_

iii. \_\_\_\_\_

3. a) Identify TWO types of early human shelters. (2 marks)

i. \_\_\_\_\_

ii. \_\_\_\_\_



b) Describe TWO features of traditional buildings. (2 marks)

i. \_\_\_\_\_.

ii. \_\_\_\_\_.

c) State TWO features of modern buildings that demonstrate technological advancement. (2 marks)

i. \_\_\_\_\_.

ii. \_\_\_\_\_.

4. a) Name THREE main components of a building. (3 marks)

i. \_\_\_\_\_.

ii. \_\_\_\_\_.

iii. \_\_\_\_\_.

b) State ONE function of each component named above. (3 marks)

i. \_\_\_\_\_.

ii. \_\_\_\_\_.

iii. \_\_\_\_\_.

c) Explain TWO reasons why proper site selection is important before construction. (4 marks)

i. \_\_\_\_\_.

ii. \_\_\_\_\_.

### **SECTION B: (40 MARKS)**

5. a) Explain FIVE factors to consider when selecting a building site. (5 marks)

i. \_\_\_\_\_.

ii. \_\_\_\_\_.

iii. \_\_\_\_\_.

iv. \_\_\_\_\_.

v. \_\_\_\_\_.

b) Describe THREE safety measures to observe during site preparation. (3 marks)

i. \_\_\_\_\_.

ii. \_\_\_\_\_.

iii. \_\_\_\_\_.

c) State TWO dangers of improper disposal of building waste. (2 marks)

i. \_\_\_\_\_.

ii. \_\_\_\_\_.

6. a) List FIVE hand tools commonly used during site clearing. (5 marks)

i. \_\_\_\_\_.

ii. \_\_\_\_\_.

iii. \_\_\_\_\_.

iv. \_\_\_\_\_.

v. \_\_\_\_\_.



b) For any THREE tools listed above, explain ONE use and ONE maintenance practice for each. (5 marks)

Tool	Use	Maintenance
i. _____	_____	_____
ii. _____	_____	_____
iii. _____	_____	_____

7. a) Describe the following site levelling methods:

i) Cut method (2 marks)

- i. \_\_\_\_\_
- ii. \_\_\_\_\_

ii) Fill method (2 marks)

- i. \_\_\_\_\_
- ii. \_\_\_\_\_

iii) Cut and fill method (2 marks)

- i. \_\_\_\_\_
- ii. \_\_\_\_\_

b) Explain TWO environmentally friendly ways of disposing building waste. (4 marks)

- i. \_\_\_\_\_
- ii. \_\_\_\_\_

8. a) Describe the functions of the following building parts:

i) Floor (2 marks)

- i. \_\_\_\_\_
- ii. \_\_\_\_\_

ii) Wall (2 marks)

- i. \_\_\_\_\_
- ii. \_\_\_\_\_

iii) Roof (2 marks)

- i. \_\_\_\_\_
- ii. \_\_\_\_\_

b) Explain TWO importance of doors and windows in a building. (4 marks)

- i. \_\_\_\_\_
- ii. \_\_\_\_\_





April 2026

Time: 2 Hours

Code: CKEAB 004



**LEARNER'S DETAILS**

Name: \_\_\_\_\_ School: \_\_\_\_\_

Assessment Number: \_\_\_\_\_ School Code: \_\_\_\_\_ Date: \_\_\_\_\_ Signature: \_\_\_\_\_

**INSTRUCTIONS TO LEARNERS**

- i. Answer all questions in the spaces provided.
- ii. All responses must be structured and clearly explained.
- iii. Use calculations, tables, and diagrams where appropriate.
- iv. Show all workings for financial and budget calculations.

**SECTION A: (80 MARKS)**

1. A bank manager explains the role of money in business and daily life.

a) Define money. (2 marks)

---

---

b) Explain FOUR functions of money in business transactions. (4 marks)

- i. \_\_\_\_\_
- ii. \_\_\_\_\_
- iii. \_\_\_\_\_
- iv. \_\_\_\_\_

c) Identify FOUR security features on Kenyan banknotes. (4 marks)

- i. \_\_\_\_\_
- ii. \_\_\_\_\_
- iii. \_\_\_\_\_
- iv. \_\_\_\_\_

2. A youth group receives funds to run a community project.

a) Distinguish between ethical and unethical practices in money handling. (4 marks)

---

---

---

---



b) Describe THREE ethical practices that promote accountability in business finances. (6 marks)

i. \_\_\_\_\_.

ii. \_\_\_\_\_.

iii. \_\_\_\_\_.

3. A retail shop plans to expand operations in two years.

a) Define a financial goal. (2 marks)

\_\_\_\_\_.

\_\_\_\_\_.

b) Explain THREE benefits of setting financial goals in business. (6 marks)

i. \_\_\_\_\_.

ii. \_\_\_\_\_.

iii. \_\_\_\_\_.

c) State TWO factors a business owner should consider when setting financial goals. (2 marks)

i. \_\_\_\_\_.

ii. \_\_\_\_\_.

4. A school canteen struggles with financial planning.

a) Define the term budgeting. (2 marks)

\_\_\_\_\_.

\_\_\_\_\_.

b) Explain THREE types of budgets used in businesses. (6 marks)

i. \_\_\_\_\_.

ii. \_\_\_\_\_.

iii. \_\_\_\_\_.

c) A student earns KES 1,500 per month and spends KES 800 on food, KES 300 on transport, and KES 200 on personal items. Prepare a simple monthly budget showing:

i) Total income

ii) Total expenses

iii) Savings (5 marks)



d) State TWO benefits of budgeting to a business. (2 marks)

i. \_\_\_\_\_.

ii. \_\_\_\_\_.

5. A learner opens a savings account at a commercial bank.

a) Define a bank. (2 marks)

\_\_\_\_\_

\_\_\_\_\_

b) Explain TWO roles of banks in promoting economic growth. (4 marks)

i. \_\_\_\_\_.

ii. \_\_\_\_\_.

c) Analyse THREE types of bank accounts available in Kenya. (4 marks)

i. \_\_\_\_\_.

ii. \_\_\_\_\_.

iii. \_\_\_\_\_.

6. A community project receives donor funds for development activities.

a) Identify THREE risks of unethical financial management in a business. (3 marks)

i. \_\_\_\_\_.

ii. \_\_\_\_\_.

iii. \_\_\_\_\_.

b) Suggest FOUR measures a business can implement to ensure transparency and accountability. (7 marks)

i. \_\_\_\_\_.

ii. \_\_\_\_\_.

iii. \_\_\_\_\_.

iv. \_\_\_\_\_.

v. \_\_\_\_\_.

7. A new entrepreneur wants to start a small retail business.

a) Define entrepreneurship. (2 marks)

\_\_\_\_\_

\_\_\_\_\_

b) Explain THREE qualities of a successful entrepreneur. (6 marks)

i. \_\_\_\_\_.

ii. \_\_\_\_\_.

iii. \_\_\_\_\_.



c) Describe FOUR factors that influence the choice of a business location. (4 marks)

- i. \_\_\_\_\_
- ii. \_\_\_\_\_
- iii. \_\_\_\_\_
- iv. \_\_\_\_\_

d) Explain how having a business plan contributes to the success of a business. (3 marks)

- i. \_\_\_\_\_
- ii. \_\_\_\_\_
- iii. \_\_\_\_\_

8. A shopkeeper records daily sales and expenses.

a) State TWO reasons for keeping proper business records. (2 marks)

- i. \_\_\_\_\_
- ii. \_\_\_\_\_

b) Describe THREE types of business transactions that should be recorded. (6 marks)

- i. \_\_\_\_\_
- ii. \_\_\_\_\_
- iii. \_\_\_\_\_

c) Explain TWO consequences of poor record keeping on a business. (2 marks)

- i. \_\_\_\_\_
- ii. \_\_\_\_\_



**KENYA CERTIFICATE OF BASIC EDUCATION (K.C.B.E)**

**GRADE 10 – CHEMISTRY THEORY**

April 2026

Time: 2 Hours

Code: CKEAB 004



**LEARNER'S DETAILS**

Name: \_\_\_\_\_ School: \_\_\_\_\_

Assessment Number: \_\_\_\_\_ School Code: \_\_\_\_\_ Date: \_\_\_\_\_ Signature: \_\_\_\_\_

**INSTRUCTIONS TO LEARNERS**

- i. Answer all questions in the spaces provided.
- ii. All responses must be clear, structured, and explained.
- iii. Use diagrams, tables, and calculations where necessary.
- iv. Show all workings for calculations.
- v. Section A requires short and precise answers.
- vi. Section B requires detailed explanations, reasoning, and problem-solving.
- vii. Total marks: 80.

**SECTION A: (80 MARKS)**

1. A farmer uses fertilisers to improve soil fertility, a pharmacist prepares medicines, a petrol station supplies fuel, and a manufacturer produces plastics.

a) Define Chemistry. (2 marks)

---

---

b) Explain FOUR ways Chemistry contributes to daily life in the scenario above. (4 marks)

- i. \_\_\_\_\_
- ii. \_\_\_\_\_
- iii. \_\_\_\_\_
- iv. \_\_\_\_\_

c) State THREE reasons why learning Chemistry is important for society. (3 marks)

- i. \_\_\_\_\_
- ii. \_\_\_\_\_
- iii. \_\_\_\_\_

d) Give ONE example of a product in daily life derived from chemical processes. (1 mark)

---



2. During a career day, students explored careers in Chemistry.

a) Identify and briefly describe FOUR branches of Chemistry. (8 marks)

- i. \_\_\_\_\_
- ii. \_\_\_\_\_
- iii. \_\_\_\_\_
- iv. \_\_\_\_\_

b) State THREE careers that require knowledge of Chemistry. (3 marks)

- i. \_\_\_\_\_
- ii. \_\_\_\_\_
- iii. \_\_\_\_\_

3. Industries use Chemistry in agriculture, food processing, pharmaceuticals, and energy production.

a) Explain FOUR applications of Chemistry in industry. (8 marks)

- i. \_\_\_\_\_
- ii. \_\_\_\_\_
- iii. \_\_\_\_\_
- iv. \_\_\_\_\_

b) State TWO economic benefits of Chemistry. (2 marks)

- i. \_\_\_\_\_
- ii. \_\_\_\_\_

4. A health officer warns students about drug abuse.

a) Define the following terms:

i) Drug (1 mark)

---

---

ii) Prescription (1 mark)

---

---

iii) Dosage (1 mark)

---

---

b) Explain THREE effects of drug abuse on a learner. (6 marks)

- i. \_\_\_\_\_
- ii. \_\_\_\_\_
- iii. \_\_\_\_\_



c) Suggest ONE responsibility of students in promoting a safe environment. (1 mark)

---

---

5. Rutherford's experiment revealed the structure of the atom.

a) State TWO observations made in Rutherford's experiment. (2 marks)

i. \_\_\_\_\_.

ii. \_\_\_\_\_.

b) Give TWO conclusions from the experiment. (2 marks)

i. \_\_\_\_\_.

ii. \_\_\_\_\_.

c) Name TWO sub-atomic particles of an atom. (2 marks)

i. \_\_\_\_\_.

ii. \_\_\_\_\_.

d) Define the following:

i) Atomic number (1 mark)

---

---

ii) Mass number (1 mark)

---

---

6. The table below shows the pH of four solutions:

Solution	pH
P	2.0
Q	12.0
R	7.0
S	5.0

a) Identify the following:

i) Strongly acidic solution \_\_\_\_\_ (½ mark)

ii) Strongly basic solution \_\_\_\_\_ (½ mark)

iii) Neutral solution \_\_\_\_\_ (1 mark)

b) State ONE use of acids and ONE use of bases in daily life. (2 marks)

i. \_\_\_\_\_.

ii. \_\_\_\_\_.



7. Element Z has two isotopes:

$Z_1$  mass = 35, abundance = 70%

$Z_2$  mass = 37, abundance = 30%

a) Define isotopes. (2 marks)

---

---

b) Calculate the relative atomic mass of Z. (4 marks)

8. An element Y has electron configuration 2.8.7.

a) Identify the:

i) Period \_\_\_\_\_ (1 mark)

ii) Group \_\_\_\_\_ (1 mark)

b) State the chemical family of Y. \_\_\_\_\_ (1 mark)

c) Predict the type of ion Y forms and explain why. (2 marks)

---

---

---

d) State TWO reasons why noble gases are chemically stable. (2 marks)

i. \_\_\_\_\_

ii. \_\_\_\_\_

e) Give ONE example each of:

i) Alkali metal \_\_\_\_\_

ii) Halogen \_\_\_\_\_

iii) Noble gas \_\_\_\_\_ (3 marks)

9. a) Write the electron arrangement (s and p notation) for:

i)  $Na^+$  \_\_\_\_\_ (2 marks)

ii)  $O^{2-}$  \_\_\_\_\_ (2 marks)

b) Using valency, write the formula for:

i) Magnesium chloride \_\_\_\_\_ (2 marks)

ii) Aluminium oxide \_\_\_\_\_ (2 marks)



c) Balance the following chemical equation:



d) State TWO observations when iron reacts with oxygen. (2 marks)

i. \_\_\_\_\_.

ii. \_\_\_\_\_.

10. a) Explain TWO uses of isotopes in medicine and industry. (4 marks)

i. \_\_\_\_\_.

ii. \_\_\_\_\_.

b) Describe TWO environmental applications of Chemistry in daily life. (4 marks)

i. \_\_\_\_\_.

ii. \_\_\_\_\_.





April 2026

Time: 2 Hours

Code: CKEAB 004



LEARNER'S DETAILS

Name: \_\_\_\_\_ School: \_\_\_\_\_

Assessment Number: \_\_\_\_\_ School Code: \_\_\_\_\_ Date: \_\_\_\_\_ Signature: \_\_\_\_\_

INSTRUCTIONS TO LEARNERS

- i. Answer all questions in the spaces provided.
- ii. All answers must be structured, with explanations and examples where necessary.
- iii. Use diagrams, tables, and calculations where applicable.
- iv. Show all workings for conversions or calculations.
- v. Total marks: 80.

SECTION A: (80 MARKS)

1. A school project requires learners to investigate early computing machines and modern computers.

a) Identify FOUR early computing devices and give ONE use for each. (8 marks)

Early computing device	Use
i.	
ii.	
iii.	

b) Explain ONE reason why early mechanical computing devices led to the development of electronic computers. (1 mark)

\_\_\_\_\_  
\_\_\_\_\_

c) Define a computer. (1 mark)

\_\_\_\_\_  
\_\_\_\_\_

2. a) State the main technology used in each computer generation: (5 marks)

i) First generation: \_\_\_\_\_

ii) Second generation: \_\_\_\_\_

iii) Third generation: \_\_\_\_\_

iv) Fourth generation: \_\_\_\_\_

v) Fifth generation: \_\_\_\_\_



b) Explain THREE technological improvements that occurred across generations. (3 marks)

- i. \_\_\_\_\_
- ii. \_\_\_\_\_
- iii. \_\_\_\_\_

c) State TWO ways computer evolution has influenced modern society. (2 marks)

- i. \_\_\_\_\_
- ii. \_\_\_\_\_

3. a) Identify FIVE functional components of a modern computer system. (5 marks)

- i. \_\_\_\_\_
- ii. \_\_\_\_\_
- iii. \_\_\_\_\_
- iv. \_\_\_\_\_
- v. \_\_\_\_\_

b) Explain the relationship between CPU, memory, and input/output devices. (3 marks)

- i. \_\_\_\_\_
- ii. \_\_\_\_\_
- iii. \_\_\_\_\_

4. a) Convert the following numbers: (6 marks)

i)  $45_{10} \rightarrow$  binary

ii)  $11011_2 \rightarrow$  decimal

iii)  $7A_{16} \rightarrow$  decimal

b) State TWO reasons why computers use the binary number system. (2 marks)

- i. \_\_\_\_\_
- ii. \_\_\_\_\_

5. a) Define: (2 marks)

i) RISC architecture:

\_\_\_\_\_

ii) CISC architecture:

\_\_\_\_\_



b) Highlight THREE differences between RISC and CISC architectures. (4 marks)

- i. \_\_\_\_\_
- ii. \_\_\_\_\_
- iii. \_\_\_\_\_

6. a) Classify the following as input or output devices and state their category: (5 marks)

- i) Keyboard: \_\_\_\_\_
- ii) Mouse: \_\_\_\_\_
- iii) Scanner: \_\_\_\_\_
- iv) Printer: \_\_\_\_\_
- v) Touch screen: \_\_\_\_\_

b) State THREE factors to consider when selecting input/output devices. (3 marks)

- i. \_\_\_\_\_
- ii. \_\_\_\_\_
- iii. \_\_\_\_\_

c) State TWO advantages of touch screen technology. (2 marks)

- i. \_\_\_\_\_
- ii. \_\_\_\_\_

7. a) Differentiate between: (4 marks)

i) Primary storage and secondary storage

- \_\_\_\_\_
- \_\_\_\_\_
- \_\_\_\_\_
- \_\_\_\_\_

ii) RAM and ROM

- \_\_\_\_\_
- \_\_\_\_\_
- \_\_\_\_\_
- \_\_\_\_\_

b) Identify FOUR secondary storage devices and classify them as internal or external. (4 marks)

- i) \_\_\_\_\_
- ii) \_\_\_\_\_
- iii) \_\_\_\_\_
- iv) \_\_\_\_\_



8. a) Define the fetch-execute cycle. (2 marks)

.....

.....

b) Describe FOUR stages involved in the cycle. (4 marks)

i. ....

ii. ....

iii. ....

iv. ....

9. a) Differentiate between system software and application software. (4 marks)

.....

.....

.....

b) State TWO examples of each type of software. (4 marks)

i. ....

ii. ....

10. a) Explain TWO ways computers have transformed education and business. (4 marks)

i. ....

ii. ....

b) State TWO safety precautions to observe when using computers in a laboratory. (2 marks)

i. ....

ii. ....





April 2026

Time: 2 Hours

Code: CKEAB 004

LEARNER'S DETAILS

Name: \_\_\_\_\_ School: \_\_\_\_\_

Assessment Number: \_\_\_\_\_ School Code: \_\_\_\_\_ Date: \_\_\_\_\_ Signature: \_\_\_\_\_

INSTRUCTIONS TO LEARNERS

- i. Answer all questions in the spaces provided.
- ii. All answers must be structured, with explanations and examples where necessary.
- iii. Use relevant Biblical references where necessary.
- iv. Ensure your answers are clear, neat, and well-organized.
- v. Marks for each question are indicated at the end.

SECTION A: (80 MARKS)

1. a) Define the Bible and explain its significance to Christians. (3 marks)

\_\_\_\_\_  
\_\_\_\_\_

b) Explain FIVE reasons why the Bible is considered the inspired Word of God. (5 marks)

i. \_\_\_\_\_

ii. \_\_\_\_\_

iii. \_\_\_\_\_

iv. \_\_\_\_\_

v. \_\_\_\_\_

c) State TWO ways Christians should handle and respect the Holy Bible. (2 marks)

i. \_\_\_\_\_

ii. \_\_\_\_\_

2. a) Explain how God inspired human authors to write the Bible. (4 marks)

i. \_\_\_\_\_

ii. \_\_\_\_\_

iii. \_\_\_\_\_

iv. \_\_\_\_\_



b) Name THREE Old Testament authors and the books they wrote. (3 marks)

- i. \_\_\_\_\_
- ii. \_\_\_\_\_
- iii. \_\_\_\_\_

c) State THREE qualities God required of those who wrote Scripture. (3 marks)

- i. \_\_\_\_\_
- ii. \_\_\_\_\_
- iii. \_\_\_\_\_

3. a) Identify the FIVE categories of the Old Testament books. (5 marks)

- i. \_\_\_\_\_
- ii. \_\_\_\_\_
- iii. \_\_\_\_\_
- iv. \_\_\_\_\_
- v. \_\_\_\_\_

b) Give ONE example of a book from each category. (5 marks)

- i. \_\_\_\_\_
- ii. \_\_\_\_\_
- iii. \_\_\_\_\_
- iv. \_\_\_\_\_
- v. \_\_\_\_\_

c) State TWO benefits of grouping the Bible books into categories. (2 marks)

- i. \_\_\_\_\_
- ii. \_\_\_\_\_

4. a) List FIVE literary forms used in the Bible. (5 marks)

- i. \_\_\_\_\_
- ii. \_\_\_\_\_
- iii. \_\_\_\_\_
- iv. \_\_\_\_\_
- v. \_\_\_\_\_

b) Identify the literary form of the book of Proverbs. (1 mark)

- i. \_\_\_\_\_

c) Explain TWO reasons why understanding literary forms is important in studying the Bible. (2 marks)

- i. \_\_\_\_\_
- ii. \_\_\_\_\_



5. a) Name FIVE methods used to study the Bible. (5 marks)

- i. \_\_\_\_\_
- ii. \_\_\_\_\_
- iii. \_\_\_\_\_
- iv. \_\_\_\_\_
- v. \_\_\_\_\_

b) Explain TWO benefits of regular Bible study. (2 marks)

- i. \_\_\_\_\_
- ii. \_\_\_\_\_

c) State ONE career related to the study of C.R.E. (1 mark)

- i. \_\_\_\_\_
- ii. \_\_\_\_\_

6. a) Define the term sin. (2 marks)

- \_\_\_\_\_
- \_\_\_\_\_

b) State THREE consequences of sin after the Fall. (3 marks)

- i. \_\_\_\_\_
- ii. \_\_\_\_\_
- iii. \_\_\_\_\_
- iv. \_\_\_\_\_

c) Outline TWO privileges humans enjoyed before sin. (2 marks)

- i. \_\_\_\_\_
- ii. \_\_\_\_\_

d) Name ONE way God demonstrated His love after the Fall. (1 mark)

- i. \_\_\_\_\_

7. a) Define redemption. (2 marks)

- \_\_\_\_\_
- \_\_\_\_\_

b) Explain THREE steps in God's redemptive plan. (6 marks)

- i. \_\_\_\_\_
- ii. \_\_\_\_\_
- iii. \_\_\_\_\_

c) Mention TWO ways Christians respond to God's plan of salvation. (2 marks)

- i. \_\_\_\_\_
- ii. \_\_\_\_\_



8. a) Define stewardship. (2 marks)

---

---

b) State FOUR qualities of a good steward. (4 marks)

- i. \_\_\_\_\_
- ii. \_\_\_\_\_
- iii. \_\_\_\_\_
- iv. \_\_\_\_\_

c) Describe TWO ways students can practice good stewardship in school or at home. (2 marks)

- i. \_\_\_\_\_
- ii. \_\_\_\_\_

9. a) Describe THREE ways God provided for the Israelites during the Exodus. (6 marks)

- i. \_\_\_\_\_
- ii. \_\_\_\_\_
- iii. \_\_\_\_\_

b) State TWO lessons Christians can learn from the Exodus. (4 marks)

- i. \_\_\_\_\_
- ii. \_\_\_\_\_

10. a) Define a covenant. (2 marks)

- i. \_\_\_\_\_
- ii. \_\_\_\_\_

b) State FOUR responsibilities of the Israelites under the Sinai covenant. (4 marks)

- i. \_\_\_\_\_
- ii. \_\_\_\_\_
- iii. \_\_\_\_\_
- iv. \_\_\_\_\_

c) Describe FOUR ways Christians today apply the Ten Commandments in daily life. (4 marks)

- i. \_\_\_\_\_
- ii. \_\_\_\_\_
- iii. \_\_\_\_\_
- iv. \_\_\_\_\_



**KENYA CERTIFICATE OF BASIC EDUCATION (K.C.B.E)**  
**GRADE 10 – COMMUNITY SERVICE LEARNING (THEORY)**



April 2026

Time: 2 Hours

Code: CKEAB 004



**LEARNER'S DETAILS**

Name: \_\_\_\_\_ School: \_\_\_\_\_

Assessment Number: \_\_\_\_\_ School Code: \_\_\_\_\_ Date: \_\_\_\_\_ Signature: \_\_\_\_\_

**INSTRUCTIONS TO LEARNERS**

- i. Answer all questions in Section A and any four questions from Section B.
- ii. All answers must be structured, with explanations and examples where necessary.
- iii. Ensure your answers are clear, neat, and well-organized.
- iv. Marks for each question are indicated at the end of the question.
- v. Read each question carefully before answering.

**SECTION A: THEORY (70 MARKS)**

Answer all questions in this section.

1. Understanding Community and CSL (8 marks)

a) Define the following:

i) Community (2 marks)

---

---

ii) Community Service Learning (CSL) (2 marks)

---

---

b) Explain THREE ways CSL differs from ordinary community service. (3 marks)

i. \_\_\_\_\_.

ii. \_\_\_\_\_.

iii. \_\_\_\_\_.

iv. \_\_\_\_\_.

c) State ONE principle of CSL that ensures effective learning. (1 mark)

---

---



2. a) Explain FOUR benefits of integrating CSL into the school curriculum. (8 marks)

- i. \_\_\_\_\_
- ii. \_\_\_\_\_
- iii. \_\_\_\_\_
- iv. \_\_\_\_\_

b) State TWO ways CSL promotes responsible citizenship among learners. (2 marks)

- i. \_\_\_\_\_
- ii. \_\_\_\_\_

3. a) Define civic identity. (2 marks)

---

---

b) Identify FOUR roles a learner can perform to demonstrate civic responsibility. (6 marks)

- i. \_\_\_\_\_
- ii. \_\_\_\_\_
- iii. \_\_\_\_\_
- iv. \_\_\_\_\_

c) State TWO benefits of CSL to the community. (2 marks)

- i. \_\_\_\_\_
- ii. \_\_\_\_\_

4. a) List FIVE types of community needs that can be addressed through CSL. (5 marks)

- i. \_\_\_\_\_
- ii. \_\_\_\_\_
- iii. \_\_\_\_\_
- iv. \_\_\_\_\_
- v. \_\_\_\_\_

b) For any THREE needs listed above, give ONE example each. (3 marks)

- i. \_\_\_\_\_
- ii. \_\_\_\_\_
- iii. \_\_\_\_\_

c) Explain TWO reasons why identifying community needs is important before implementing CSL projects. (2 marks)

- i. \_\_\_\_\_
- ii. \_\_\_\_\_

5. a) Define the term community resources. (2 marks)

---

---



b) Identify FOUR types of community resources that support CSL activities. (4 marks)

- i. \_\_\_\_\_
- ii. \_\_\_\_\_
- iii. \_\_\_\_\_
- iv. \_\_\_\_\_

c) Name TWO community stakeholders who can collaborate with schools in CSL projects. (2 marks)

- i. \_\_\_\_\_
- ii. \_\_\_\_\_

d) State TWO roles these stakeholders can play in CSL activities. (2 marks)

- i. \_\_\_\_\_
- ii. \_\_\_\_\_

6. a) Identify FOUR qualities of an effective CSL leader. (4 marks)

- i. \_\_\_\_\_
- ii. \_\_\_\_\_
- iii. \_\_\_\_\_
- iv. \_\_\_\_\_

b) Name TWO leadership styles suitable for managing CSL activities. (2 marks)

- i. \_\_\_\_\_
- ii. \_\_\_\_\_

c) Explain TWO reasons why good leadership is important in CSL projects. (4 marks)

- i. \_\_\_\_\_
- ii. \_\_\_\_\_

7. a) Define intercultural competence. (2 marks)

\_\_\_\_\_

\_\_\_\_\_

b) State THREE elements of intercultural competence. (3 marks)

- i. \_\_\_\_\_
- ii. \_\_\_\_\_
- iii. \_\_\_\_\_

c) Identify THREE challenges that may arise from cultural differences in the community. (3 marks)

- i. \_\_\_\_\_
- ii. \_\_\_\_\_
- iii. \_\_\_\_\_



d) Suggest TWO ways learners can promote unity and social cohesion among diverse cultures. (2 marks)

i. \_\_\_\_\_

ii. \_\_\_\_\_

**SECTION B: (30 MARKS)**

Answer any four questions.

8. a) Explain the steps involved in planning a community service learning project. (6 marks)

i. \_\_\_\_\_

ii. \_\_\_\_\_

iii. \_\_\_\_\_

iv. \_\_\_\_\_

b) State THREE criteria for selecting a suitable CSL project in your school or community. (3 marks)

i. \_\_\_\_\_

ii. \_\_\_\_\_

iii. \_\_\_\_\_

c) Give TWO examples of practical CSL projects you can implement. (2 marks)

i. \_\_\_\_\_

ii. \_\_\_\_\_

9. a) Explain THREE environmental issues in your community that can be addressed through CSL. (6 marks)

i. \_\_\_\_\_

ii. \_\_\_\_\_

iii. \_\_\_\_\_

b) Suggest TWO CSL activities that can help conserve the environment. (4 marks)

i. \_\_\_\_\_

ii. \_\_\_\_\_

10. a) State THREE health-related needs in your community that learners can address through CSL. (3 marks)

i. \_\_\_\_\_

ii. \_\_\_\_\_

iii. \_\_\_\_\_

b) Explain TWO CSL activities that promote good health and hygiene. (4 marks)

i. \_\_\_\_\_

ii. \_\_\_\_\_

c) Identify TWO benefits of CSL to public health. (3 marks)

i. \_\_\_\_\_

ii. \_\_\_\_\_



11. a) Describe **THREE** ways learners can educate the community on social issues through CSL. (6 marks)

- i. \_\_\_\_\_.
- ii. \_\_\_\_\_.
- iii. \_\_\_\_\_.

b) Explain **TWO** benefits of awareness campaigns to the community. (4 marks)

- i. \_\_\_\_\_.
- ii. \_\_\_\_\_.

12. a) Explain **THREE** methods of monitoring CSL activities. (6 marks)

- i. \_\_\_\_\_.
- ii. \_\_\_\_\_.
- iii. \_\_\_\_\_.

b) State **TWO** reasons why evaluation is important in CSL projects. (4 marks)

- i. \_\_\_\_\_.
- ii. \_\_\_\_\_.

13. a) Identify **FOUR** challenges learners may face during CSL activities. (4 marks)

- i. \_\_\_\_\_.
- ii. \_\_\_\_\_.
- iii. \_\_\_\_\_.
- iv. \_\_\_\_\_.

b) Suggest **TWO** strategies to overcome each challenge mentioned above. (6 marks)

- i. \_\_\_\_\_.
- ii. \_\_\_\_\_.





**April 2026**

**Time: 2 Hours**

**Code: CKEAB 004**



**LEARNER'S DETAILS**

**Name:** \_\_\_\_\_ **School:** \_\_\_\_\_

**Assessment Number:** \_\_\_\_\_ **School Code:** \_\_\_\_\_ **Date:** \_\_\_\_\_ **Signature:** \_\_\_\_\_

**INSTRUCTIONS TO LEARNERS**

- i. Answer all questions in Section A and any four questions from Section B.
- ii. All answers must be structured, with explanations, calculations, and examples where necessary.
- iii. Ensure your answers are clear, neat, and well-organized.
- iv. Marks for each question are indicated at the end of the question.
- v. Read each question carefully before answering.

**SECTION A: THEORY (70 MARKS)**

Answer all questions in this section.

1. Electricity in the Community (6 marks)

a) Define the following:

i) Electricity (2 marks)

---

---

ii) Electrical Technology (2 marks)

---

---

b) State TWO ways electricity improves the quality of life in rural communities. (2 marks)

i. \_\_\_\_\_

ii. \_\_\_\_\_

2. a) Identify FIVE career opportunities in the field of electrical technology. (5 marks)

i. \_\_\_\_\_

ii. \_\_\_\_\_

iii. \_\_\_\_\_

iv. \_\_\_\_\_

v. \_\_\_\_\_



3. a) Explain THREE safety precautions to observe before working on any electrical installation. (3 marks)

- i. \_\_\_\_\_
- ii. \_\_\_\_\_
- iii. \_\_\_\_\_

b) Describe THREE roles of Kenya Power and Lighting Company in ensuring electrical safety. (3 marks)

- i. \_\_\_\_\_
- ii. \_\_\_\_\_
- iii. \_\_\_\_\_

4. a) Define the following components:

i) Resistor (2 marks)

---

---

ii) Capacitor (2 marks)

---

---

b) Explain ONE practical use of each component in daily electrical appliances. (4 marks)

- i. \_\_\_\_\_
- ii. \_\_\_\_\_
- iii. \_\_\_\_\_
- iv. \_\_\_\_\_

5. A learner connects a 9 V battery to a resistor and observes a current of 0.3 A.

a) Calculate the resistance of the resistor. (3 marks)

b) State TWO factors that affect the current in a DC circuit. (2 marks)

- i. \_\_\_\_\_
- ii. \_\_\_\_\_

c) Give TWO examples of devices that operate on DC circuits. (2 marks)

- i. \_\_\_\_\_
- ii. \_\_\_\_\_

6. a) State THREE differences between series and parallel resistor connections. (3 marks)

- i. \_\_\_\_\_
- ii. \_\_\_\_\_
- iii. \_\_\_\_\_



b) List TWO advantages of connecting electrical devices in parallel in households. (3 marks)

i. \_\_\_\_\_

ii. \_\_\_\_\_

7. A flashlight fails to work after inserting new batteries.

a) Suggest THREE possible faults in the circuit. (3 marks)

i. \_\_\_\_\_

ii. \_\_\_\_\_

iii. \_\_\_\_\_

b) Describe TWO methods of troubleshooting DC circuits. (2 marks)

i. \_\_\_\_\_

ii. \_\_\_\_\_

8. a) Explain the principle of operation of a capacitor. (3 marks)

i. \_\_\_\_\_

ii. \_\_\_\_\_

iii. \_\_\_\_\_

b) State THREE characteristics of capacitors in DC circuits. (3 marks)

i. \_\_\_\_\_

ii. \_\_\_\_\_

iii. \_\_\_\_\_

c) Identify ONE practical use of capacitors in household appliances. (1 mark)

\_\_\_\_\_

\_\_\_\_\_

9. a) State FIVE ways electrical technology improves industrial and domestic life. (5 marks)

i. \_\_\_\_\_

ii. \_\_\_\_\_

iii. \_\_\_\_\_

iv. \_\_\_\_\_

v. \_\_\_\_\_

10. a) Name THREE instruments used to measure electrical quantities. (3 marks)

i. \_\_\_\_\_

ii. \_\_\_\_\_

iii. \_\_\_\_\_

b) State the quantity measured by each of the instruments named above. (2 marks)

i. \_\_\_\_\_

ii. \_\_\_\_\_



**SECTION B: (30 MARKS)**

**Answer any four questions.**

11. A series circuit consists of a 12 V battery and two resistors of 4  $\Omega$  and 8  $\Omega$ .

a) Calculate the total resistance of the circuit. (3 marks)

b) Determine the current flowing through the circuit. (3 marks)

- i. \_\_\_\_\_
- ii. \_\_\_\_\_
- iii. \_\_\_\_\_

c) State TWO practical applications of series circuits. (2 marks)

- i. \_\_\_\_\_
- ii. \_\_\_\_\_

12. a) Explain FOUR safety rules to follow when installing electrical wiring in a school laboratory. (4 marks)

- i. \_\_\_\_\_
- ii. \_\_\_\_\_
- iii. \_\_\_\_\_
- iv. \_\_\_\_\_

b) Describe TWO roles of protective devices in electrical installations. (4 marks)

- i. \_\_\_\_\_
- ii. \_\_\_\_\_

13. a) A capacitor is used in a traffic light timer circuit. Explain THREE factors to consider when selecting a capacitor for this purpose. (6 marks)

- i. \_\_\_\_\_
- ii. \_\_\_\_\_
- iii. \_\_\_\_\_

b) State TWO advantages of using capacitors in timing circuits. (2 marks)

- i. \_\_\_\_\_
- ii. \_\_\_\_\_

14. a) Explain THREE routine maintenance activities performed on electrical appliances. (6 marks)

- i. \_\_\_\_\_
- ii. \_\_\_\_\_
- iii. \_\_\_\_\_



b) State TWO consequences of poor maintenance on electrical appliances. (4 marks)

i. \_\_\_\_\_.

ii. \_\_\_\_\_.

15. a) Name THREE renewable sources of electrical energy. (3 marks)

i. \_\_\_\_\_.

ii. \_\_\_\_\_.

iii. \_\_\_\_\_.

b) Explain TWO advantages of using renewable energy in rural electrification projects. (4 marks)

i. \_\_\_\_\_.

ii. \_\_\_\_\_.





April 2026

Time: 2 Hours

Code: CKEAB 004

LEARNER'S DETAILS

Name: \_\_\_\_\_ School: \_\_\_\_\_

Assessment Number: \_\_\_\_\_ School Code: \_\_\_\_\_ Date: \_\_\_\_\_ Signature: \_\_\_\_\_

INSTRUCTIONS TO LEARNERS

- i. Answer all questions
- ii. Write your answers in the spaces provided.
- iii. Use clear, neat, and grammatically correct English.
- iv. Manage your time carefully to complete both sections.
- v. Follow the word limits where indicated.
- vi. Check your work before submission.

SECTION A: ENGLISH GRAMMAR & COMPREHENSION (70 MARKS)

Answer all questions in this section.

1. Read the following dialogue and answer the questions that follow:

Dialogue: At the Community Library

*(Mary walked into the library carrying a pile of books)*

**Librarian:** Good morning, Mary. How can I help you today?

**Mary:** Good morning. I would like to borrow these books for my research project.

**Librarian:** Certainly. Please ensure you return them within two weeks.

**Mary:** Thank you. Could you also recommend any books on environmental conservation?

**Librarian:** Absolutely. I will prepare a list for you.

**Mary:** I appreciate your help.

**Librarian:** You're welcome. Have a productive study session.

Questions:

a) Identify the two characters. (2 marks)

- i. \_\_\_\_\_
- ii. \_\_\_\_\_

b) State two services offered by the library. (2 marks)

- i. \_\_\_\_\_
- ii. \_\_\_\_\_



c) Give two polite expressions used in the dialogue. (2 marks)

i. \_\_\_\_\_

ii. \_\_\_\_\_

d) Identify the setting of the dialogue. (2 marks)

i. \_\_\_\_\_

ii. \_\_\_\_\_

e) Explain one benefit of borrowing books from the library for research. (2 marks)

i. \_\_\_\_\_

**2. Read the passage below and answer the questions:**

Environmental clubs in schools play a critical role in promoting sustainability. Members participate in tree planting, recycling campaigns, and water conservation projects. These activities foster teamwork, leadership, and responsibility. Students also learn to respect different cultures when working with peers from diverse backgrounds. Challenges such as limited resources and lack of cooperation are common, but innovative solutions help overcome them. Reflection after each project enables students to evaluate their performance and improve future initiatives.

Questions:

a) What is the main idea of the passage? (2 marks)

i. \_\_\_\_\_

ii. \_\_\_\_\_

b) Identify two environmental activities mentioned. (2 marks)

i. \_\_\_\_\_

ii. \_\_\_\_\_

c) State two leadership skills gained through participation in environmental projects. (2 marks)

i. \_\_\_\_\_

ii. \_\_\_\_\_

d) Explain how working in diverse groups promotes social understanding. (3 marks)

i. \_\_\_\_\_

ii. \_\_\_\_\_

iii. \_\_\_\_\_

e) Identify two challenges faced by school environmental clubs. (2 marks)

i. \_\_\_\_\_

ii. \_\_\_\_\_

f) Explain the importance of reflection after each project. (2 marks)

i. \_\_\_\_\_

ii. \_\_\_\_\_



**3. Grammar and Vocabulary (15 marks)**

a) Identify the nouns in the sentence and classify them as proper or common. (4 marks)

*“James and his friends visited the Nairobi Museum.”*

b) Replace the underlined noun with a pronoun: (2 marks)

*“The librarian praised the librarian for his dedication.”*

c) Fill in the blanks with suitable determiners: (2 marks)

i) \_\_\_\_\_ student should submit the assignment on time.

ii) \_\_\_\_\_ books on the shelf belong to the school.

d) Correct the run-on sentence: (3 marks)

*“Community service is important it teaches responsibility and teamwork.”*

e) Join the sentences using a suitable coordinating conjunction: (4 marks)

*“The students started a project. They did not have enough materials.”*

**4. Broken Passage (10 marks)**

Fill in the blanks with appropriate words:

Effective communication requires active listening. Many learners are easily \_\_\_\_\_ (1) during conversations. Understanding the \_\_\_\_\_ (2) and context of a speaker helps focus on key \_\_\_\_\_ (3). Polite language and proper \_\_\_\_\_ (4) improve mutual \_\_\_\_\_ (5). Listening skills are essential for academic success, \_\_\_\_\_ (6) learning, and effective \_\_\_\_\_ (7). Taking \_\_\_\_\_ (8) and maintaining eye contact enhances understanding. Confident \_\_\_\_\_ (9) and responsible \_\_\_\_\_ (10) are outcomes of good listening skills.

**5. Writing Composition (20 marks)**

Write a composition of 300–350 words on ONE of the following:

**a) Narrative:**

*Read the beginning of the story below and continue it in about 350–400 words. Ensure your ending is logical, creative, and relevant to the theme.*

*“The envelope had no name on it. It was slipped quietly under my door at exactly midnight. At first, I thought it was a mistake. But when I opened it and saw what was inside, my heart skipped a beat...”*

---

---

---

---

---

---

---













April 2026

Time: 2 Hours

Code: CKEAB 004



LEARNER'S DETAILS

Name: \_\_\_\_\_ School: \_\_\_\_\_

Assessment Number: \_\_\_\_\_ School Code: \_\_\_\_\_ Date: \_\_\_\_\_ Signature: \_\_\_\_\_

INSTRUCTIONS TO LEARNERS

- i. Answer all questions
- ii. Write your answers in the spaces provided.
- iii. Use clear, neat, and grammatically correct English.
- iv. Manage your time carefully to complete both sections.
- v. Follow the word limits where indicated.
- vi. Check your work before submission.

1. Oral Literature (10 marks)

a) Define oral literature. (2 marks)

\_\_\_\_\_  
\_\_\_\_\_

b) Identify four genres of oral literature. (4 marks)

i. \_\_\_\_\_

ii. \_\_\_\_\_

iii. \_\_\_\_\_

iv. \_\_\_\_\_

c) Explain two functions of oral literature in society. (4 marks)

i. \_\_\_\_\_

ii. \_\_\_\_\_

2. Oral Narrative (10 marks)

Read the short story:

Wisdom in the Time of Drought

The sun had been merciless for weeks, burning the earth until it cracked like broken pottery. Kamau, a hardworking farmer, stood at the edge of his field, worry etched across his face. His maize stalks, once green and promising, now drooped helplessly under the harsh heat. The rains had delayed far beyond the usual season, and whispers of famine had



begun to spread across the village.

Kamau knew he could not ignore the problem. That evening, he called the villagers together beneath the large acacia tree at the center of the community. Men and women gathered, fanning themselves in the warm breeze, their expressions anxious but hopeful.

“My friends,” Kamau began, “our crops are failing because of poor rainfall. If we do nothing, we may face hunger in the coming months. I seek your advice.”

An elderly man rose first. “Plant again immediately,” he urged. “The rains may surprise us tomorrow.”

A younger farmer disagreed. “No,” he said firmly. “We should wait. Planting now would only waste our seeds.”

Others joined in, each offering different suggestions. Some proposed prayers and sacrifices, while others advised buying food from distant markets. The discussion grew lively, yet Kamau remained silent, listening carefully to every opinion. He respected the wisdom of the elders and the energy of the youth. When everyone had spoken, he thanked them and asked for a night to reflect.

That night, Kamau walked toward the nearby river. Though the rains had failed, the river still flowed steadily, glistening under the moonlight. An idea formed in his mind. Why wait helplessly for rain when water was within reach?

The following morning, Kamau gathered his family and began digging channels from the river to his farm. It was exhausting work, but slowly, water began to trickle through the narrow paths and soak the thirsty soil. Within days, the maize leaves regained their vibrant green color. Weeks later, his farm stood tall and healthy while others struggled with dry fields.

The villagers were astonished. They realized that Kamau had neither rushed blindly nor waited passively. Instead, he had listened, thought deeply, and acted wisely.

From that season onward, the community understood an important lesson: true wisdom lies in patience, thoughtful consultation, and the courage to make balanced decisions.

a) Identify three features of oral narratives. (3 marks)

i. \_\_\_\_\_

ii. \_\_\_\_\_

iii. \_\_\_\_\_

b) State two types of oral narratives. (2 marks)

i. \_\_\_\_\_

ii. \_\_\_\_\_

c) Give three lessons learned from the story. (5 marks)

i. \_\_\_\_\_

ii. \_\_\_\_\_

iii. \_\_\_\_\_



## 8. Poetry Analysis (10 marks)

Read the poem below and answer the questions:

“Morning in the Village”

Birds chirp softly as the sun rises,  
Smoke curls from the thatched roofs,  
Children hurry to school with eager steps,  
Women fetch water singing old songs.  
The market buzzes with life and color,  
Laughter and shouts mix with the aroma of fresh produce,  
Elders sit under trees telling tales,  
Passing down wisdom through generations.

a) Identify the type of poem. (2 marks)

i. \_\_\_\_\_

b) State three elements of poetry used. (3 marks)

i. \_\_\_\_\_

ii. \_\_\_\_\_

iii. \_\_\_\_\_

c) Explain the subject matter of the poem. (3 marks)

i. \_\_\_\_\_

ii. \_\_\_\_\_

iii. \_\_\_\_\_

d) State two reasons why poetry is important in society. (2 marks)

i. \_\_\_\_\_

ii. \_\_\_\_\_





April 2026

Time: 2 Hours

Code: CKEAB 004



LEARNER'S DETAILS

Name: \_\_\_\_\_ School: \_\_\_\_\_

Assessment Number: \_\_\_\_\_ School Code: \_\_\_\_\_ Date: \_\_\_\_\_ Signature: \_\_\_\_\_

INSTRUCTIONS TO LEARNERS

- i. Answer all questions.
- ii. Show all working.
- iii. Non-programmable calculators allowed.
- iv. Take  $\pi = 3.14$  unless stated otherwise.

SECTION A (35 MARKS)

1. (6 Marks)

a) Simplify:

$$\frac{3^4 \times 3^{-2}}{3^3}$$

b) Express 0.00032 in standard form.

c) Rationalize and simplify:

$$\frac{5}{\sqrt{3}}$$



d) Evaluate:

$$\sqrt{50} + 3\sqrt{8}$$

**2. (7 Marks)**

a) Expand and simplify:

$$(2x - 3)(x + 5) - (x - 4)^2$$

b) Factorise completely:

$$3x^2 - 11x - 4$$

c) Solve:

$$4x^2 - 9 = 0$$



**3. (6 Marks)**

Solve:

$$3x + 2y = 17$$

$$2x - y = 4$$

**4. (8 Marks)**

A projectile is modeled by:

$$h = -2t^2 + 12t + 5$$

a) Find the maximum height.

b) Determine the time when the projectile hits the ground.

c) Find the average rate of change between  $t = 1$  and  $t = 3$ .



**5. (8 Marks)**

a) Solve:

$$\log_{10}x + \log_{10}4 = 2$$

b) Solve:

$$\log_3 81 = x$$

c) Evaluate using logarithm laws:

$$\frac{\log 500 - \log 5}{\log 10}$$



**SECTION B (35 MARKS)**

**6. (8 Marks)**

Points A(2,3), B(8,7)

a) Find the distance AB.

b) Find the midpoint of AB.

c) Find the equation of the line AB.

**7. (7 Marks)**

Two similar cones have radii 3 cm and 9 cm.

a) Find the scale factor.

b) If the smaller cone has volume  $40 \text{ cm}^3$ , find the volume of the larger cone.



c) If the slant height of the smaller cone is 5 cm, find that of the larger cone.

**8. (8 Marks)**

A cylindrical water tank has radius 7 m and height 10 m.

a) Find its volume.

b) Find its total surface area.

c) If water costs KSh 50 per cubic meter, find the cost to fill the tank.

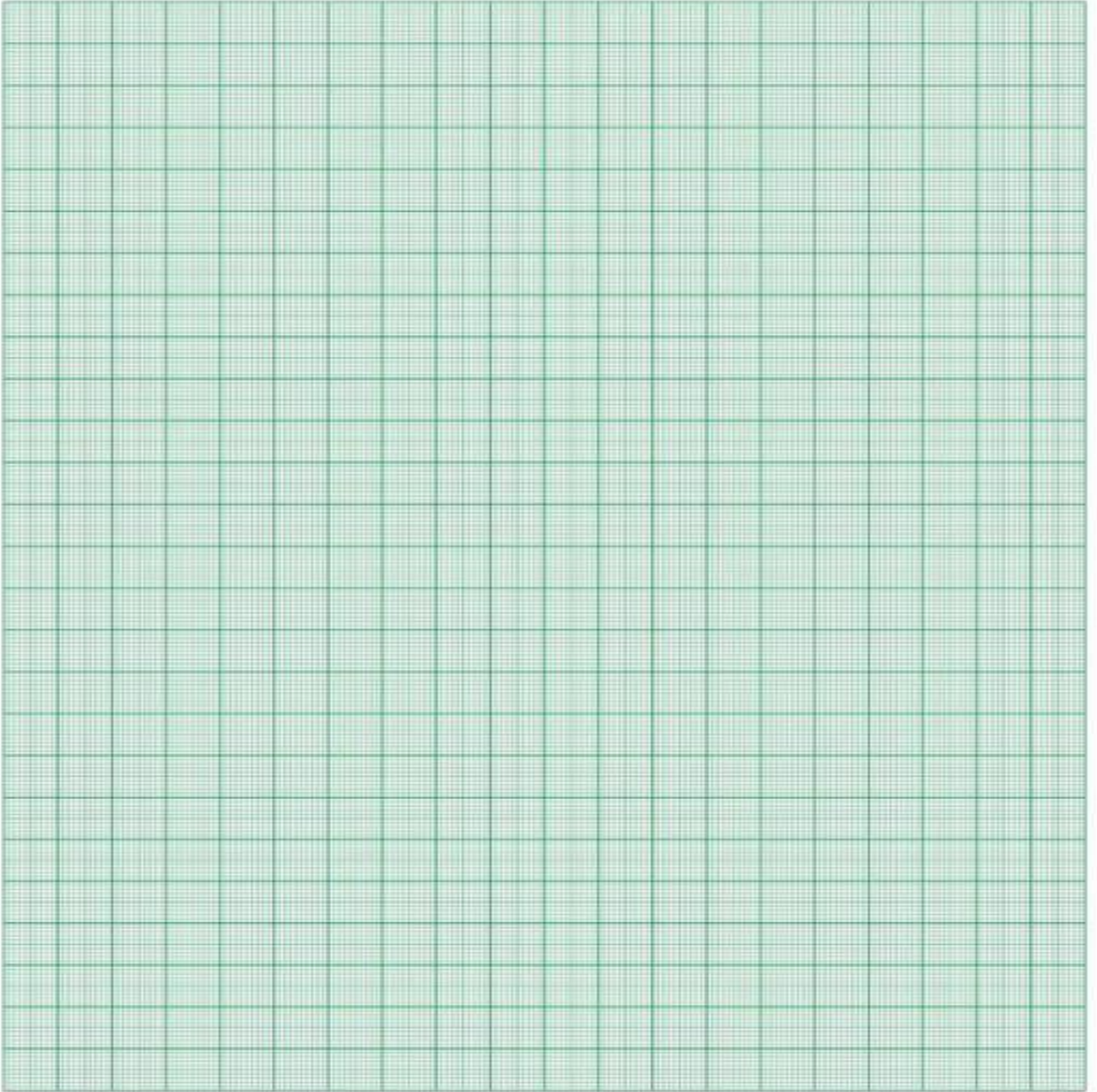


9. (6 Marks)

Draw the following lines on the same Cartesian plane and determine if they are perpendicular to each other

$$Y = \frac{x}{4} + 5$$

$$Y = -4x - 2$$



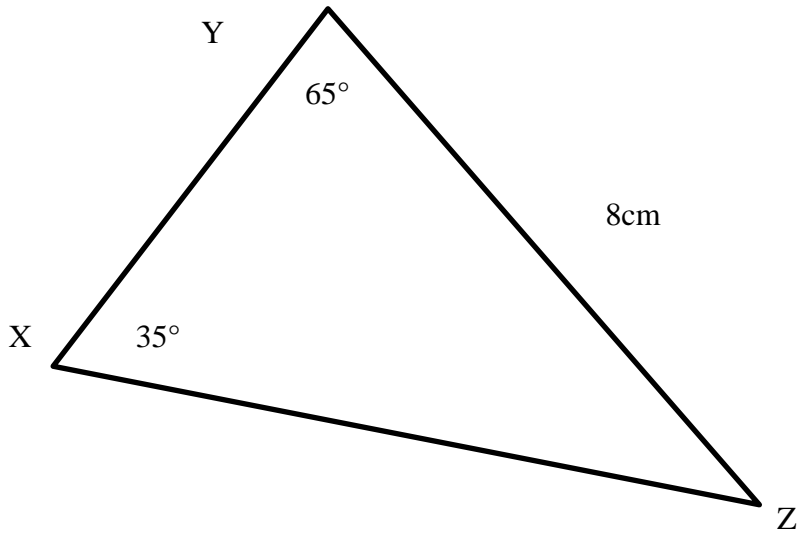
**10. (6 Marks)**

In triangle XYZ:

Angle X =  $35^\circ$

Side opposite X = 8 cm

Angle Y =  $65^\circ$



a) Find angle Z.

b) Find side YZ using sine rule.

c) Find the area of the triangle.



## SECTION C (30 MARKS)

### 11. (10 Marks)

A ship sails 120 km on a bearing of  $030^\circ$ .  
It then sails 80 km on a bearing of  $120^\circ$ .

a) Represent the journey on a scale diagram (1 cm = 20 km).

b) Find the final displacement from the starting point.

c) Find the bearing of the final position from the starting point.

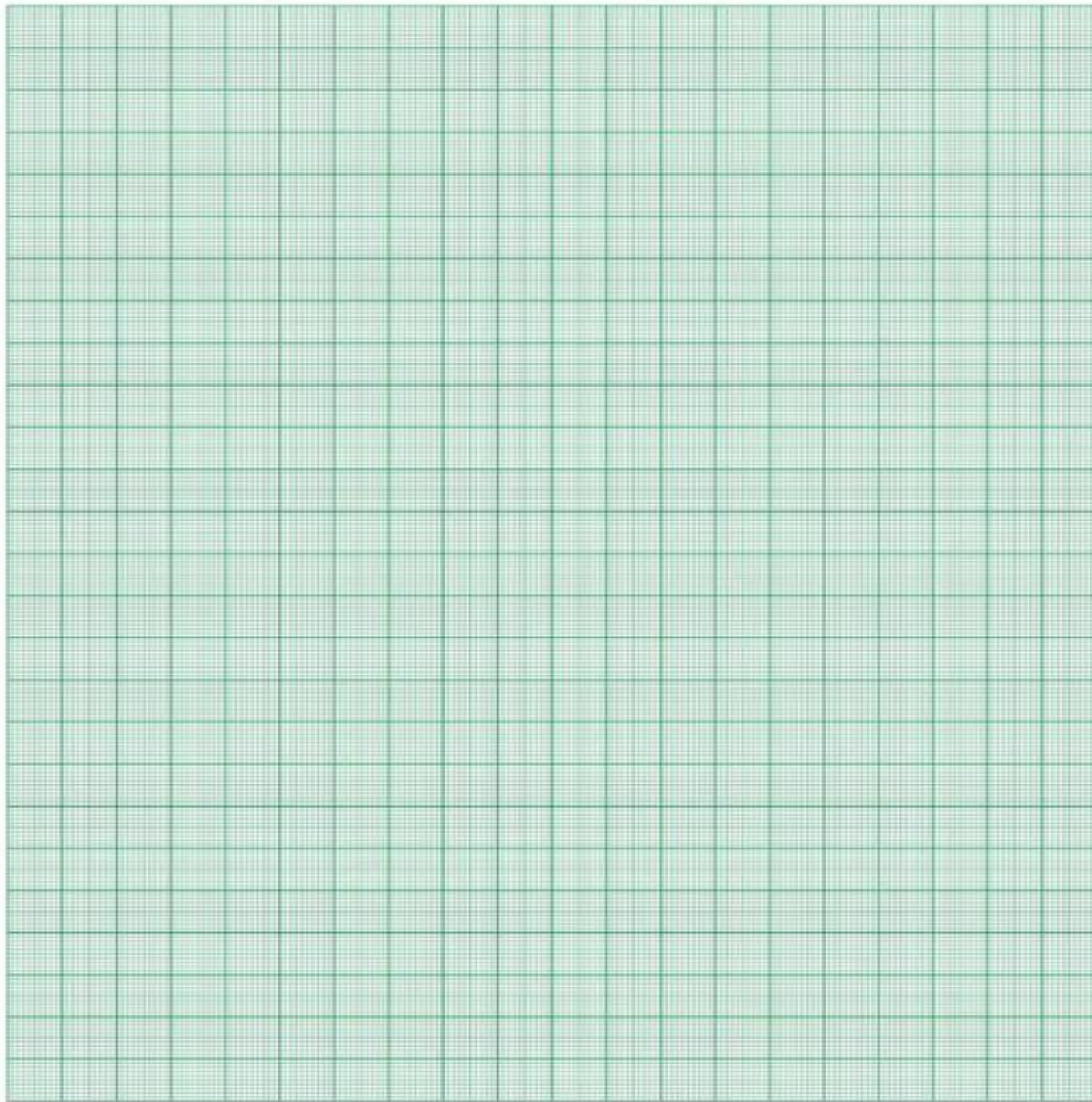


**12. (10 Marks)**

a) Solve the following graphically:

a)

$$y = x \text{ and } x + y = 4$$



b) Add the following matrices

$$\begin{pmatrix} 1 & 3 \\ 7 & 4 \end{pmatrix} \text{ and } \begin{pmatrix} -3 & 1 \\ 8 & -7 \end{pmatrix}$$



**13. A rectangular garden measures  $(x + 4)$  m by  $(2x - 3)$  m.**

a) Form an expression for the area.

b) If the area is  $70 \text{ m}^2$ , find  $x$ .

c) A path of width 1 m is built inside the garden. Find the new area remaining.





b) Mention two techniques used to create textures in wall paintings. (2 marks)

i. \_\_\_\_\_

ii. \_\_\_\_\_

c) Explain how contrast is applied to attract attention in mural art. (2 marks)

i. \_\_\_\_\_

ii. \_\_\_\_\_

d) Identify two tools or materials required for creating mural art. (2 marks)

i. \_\_\_\_\_

ii. \_\_\_\_\_

2. a) Define typography in visual communication. (1 mark)

\_\_\_\_\_  
\_\_\_\_\_

b) Identify two types of calligraphy nibs or pens suitable for artistic writing. (2 marks)

i. \_\_\_\_\_

ii. \_\_\_\_\_

c) State three rules for designing readable and attractive text. (3 marks)

i. \_\_\_\_\_

ii. \_\_\_\_\_

iii. \_\_\_\_\_

d) Explain two ways line and color enhance logos or trademarks. (2 marks)

i. \_\_\_\_\_

ii. \_\_\_\_\_

e) Mention two features of an effective poster that communicates its message clearly. (2 marks)

i. \_\_\_\_\_

ii. \_\_\_\_\_

3. a) Define stencil art. (1 mark)

\_\_\_\_\_  
\_\_\_\_\_

b) List three materials used to produce stencil artworks. (3 marks)

i. \_\_\_\_\_

ii. \_\_\_\_\_

iii. \_\_\_\_\_

c) Explain two ways repetition or pattern in spray art adds rhythm to the artwork. (2 marks)



- i. \_\_\_\_\_
- ii. \_\_\_\_\_

d) State one reason for trimming and mounting finished stencil artworks. (1 mark)

---

---

4. A learner wants to paint a hill, river, and trees using watercolors.

a) Explain how foreground, middle ground, and background are distinguished using color values. (2 marks)

---

---

b) Outline four steps for applying a graded wash in a landscape painting. (4 marks)

- i. \_\_\_\_\_
- ii. \_\_\_\_\_
- iii. \_\_\_\_\_
- iv. \_\_\_\_\_

c) Identify two types of wash commonly used in water-colour painting. (2 marks)

- i. \_\_\_\_\_
- ii. \_\_\_\_\_

d) Mention three purposes of using a viewfinder while planning the painting. (3 marks)

- i. \_\_\_\_\_
- ii. \_\_\_\_\_
- iii. \_\_\_\_\_

5. Study the figure below



a) Define collage. (1 mark)

---

---

b) Differentiate single-media and mixed-media collage. (2 marks)

i. \_\_\_\_\_

ii. \_\_\_\_\_

c) Mention two ways texture improves collage composition. (2 marks)

i. \_\_\_\_\_

ii. \_\_\_\_\_

d) State two skills developed when giving feedback on a peer's artwork. (2 marks)

i. \_\_\_\_\_

ii. \_\_\_\_\_

6. A learner sets up a bottle, fruit, and a cup on a table for drawing.

a) Name two preparatory steps before starting the drawing. (2 marks)

i. \_\_\_\_\_

ii. \_\_\_\_\_

b) Explain two ways shading makes objects appear three-dimensional. (2 marks)

i. \_\_\_\_\_

ii. \_\_\_\_\_

c) State two methods to indicate the source of light in a still life drawing. (2 marks)

i. \_\_\_\_\_

ii. \_\_\_\_\_

7. The figure bellows shows a portrait.



a) Identify four elements of art present in the portrait. (4 marks)

i. \_\_\_\_\_

ii. \_\_\_\_\_

iii. \_\_\_\_\_

iv. \_\_\_\_\_

b) State three principles of design applied in the portrait. (3 marks)

i. \_\_\_\_\_

ii. \_\_\_\_\_

iii. \_\_\_\_\_

c) Name two types of texture that enhance realism in portrait drawings. (2 marks)

i. \_\_\_\_\_

ii. \_\_\_\_\_

d) Define form as used in portrait drawing. (2 marks)

\_\_\_\_\_

\_\_\_\_\_

e) Mention three purposes of keeping a sketchbook. (3 marks)

i. \_\_\_\_\_

ii. \_\_\_\_\_

iii. \_\_\_\_\_





April 2026

Time: 2 Hours

Code: CKEAB 004



LEARNER'S DETAILS

Name: \_\_\_\_\_ School: \_\_\_\_\_

Assessment Number: \_\_\_\_\_ School Code: \_\_\_\_\_ Date: \_\_\_\_\_ Signature: \_\_\_\_\_

INSTRUCTIONS TO LEARNERS

- i. Écrivez votre nom, école, numéro d'évaluation, date et signature sur toutes les feuilles.
- ii. Répondez à toutes les questions dans les espaces prévus.
- iii. Ce papier comprend Section A (50 points) et Section B (50 points), total 100 points.
- iv. Répondez à toutes les questions de la Section A.
- v. Dans la Section B, répondez à toutes les questions.
- vi. Utilisez des phrases complètes et correctes.
- vii. Vérifiez l'orthographe et la grammaire.

SECTION A: (50 MARKS)

1: Describing Weather and Directions (10 marks)

*Un élève décrit sa maison et le temps.*

« Ma chambre est à gauche de la cuisine. La table est près de la fenêtre. Aujourd'hui, il fait froid et il neige. J'aime le soleil mais je n'aime pas le vent. »

a) Où est la chambre ? (2 marks)

\_\_\_\_\_

b) Où est la table ? (2 marks)

\_\_\_\_\_

c) Quel temps fait-il aujourd'hui ? (2 marks)

\_\_\_\_\_

d) Écris UNE chose que l'élève aime. (2 marks)

\_\_\_\_\_

e) Relevez DEUX prépositions utilisées dans le texte. (2 marks)

i. \_\_\_\_\_

ii. \_\_\_\_\_



2: Writing About a Friend (10 marks)

Imagine un ami et décris-le.

a) Écris quatre phrases pour présenter ton ami, incluant son âge, apparence, et goûts. (4 marks)

---

---

---

---

---

b) Complète les phrases avec le mot correct : (3 marks)

i) Mon ami \_\_\_\_\_ intelligent.

ii) Il \_\_\_\_\_ quinze ans.

iii) Il aime \_\_\_\_\_ football.

c) Identifie DEUX verbes que tu as utilisés dans tes phrases. (3 marks)

i. \_\_\_\_\_

ii. \_\_\_\_\_

3: a) Écris cinq membres de la famille avec les chiffres correspondants : (5 marks)

Famille	Nombre

b) Complète les mots suivants : (3 marks)

i) m\_\_re

ii) s\_\_ur

iii) fr\_\_re

c) Forme une phrase correcte en utilisant : (2 marks)

« frère / mon / s'appelle / Jean »

---

4: a) Conjugue le verbe être avec le pronom correct : (2 marks)

Je \_\_\_\_\_

Elle \_\_\_\_\_

b) Complète avec mon, ma ou mes : (2 marks)

i) \_\_\_\_\_ père

ii) \_\_\_\_\_ amis



c) Réécris les mots pour former une phrase correcte : (2 marks)

« parle / français / elle »

---

d) Conjugue le verbe avoir : (2 marks)

Nous \_\_\_\_\_ deux chiens.

e) Écris TROIS phrases correctes en utilisant : je, il, nous. (2 marks)

i. \_\_\_\_\_

ii. \_\_\_\_\_

iii. \_\_\_\_\_

5:

« Bonjour ! Voici ma famille : mon père Paul, ma mère Anne, mes sœurs Claire et Léa. Le soir, nous disons ‘Bonsoir’ et le matin ‘Bonjour’. »

a) Relève DEUX salutations du texte. (2 marks)

i. \_\_\_\_\_

ii. \_\_\_\_\_

b) Que signifie mes sœurs ? (1 mark)

---

c) Écris trois mots du texte qui indiquent des membres de la famille. (3 marks)

i. \_\_\_\_\_

ii. \_\_\_\_\_

iii. \_\_\_\_\_

d) Complète la phrase : (1 mark)

Le soir, on dit \_\_\_\_\_.

e) Écris UNE phrase correcte avec le mot famille. (3 marks)

---

---

---

## SECTION B: (50 MARKS)

6: Guided Writing – My Daily Routine (15 marks)

Écris un paragraphe de six phrases sur ta routine quotidienne, incluant :

Les heures de la journée

Les activités scolaires et à la maison

Tes goûts et préférences

---

---

---



7:

A. Listening Passage (Teacher reads twice):

« Bonjour, je m'appelle Claire. J'ai quatorze ans. Je suis petite et j'ai les cheveux bruns. Mon frère s'appelle Paul. Il est grand et sportif. J'aime lire et je déteste courir. »

a) Qui parle dans le passage ? (1 mark)

---

b) Décris Claire. (2 marks)

---

c) Écris UNE chose qu'elle aime. (1 mark)

---

d) Complète : Paul est \_\_\_\_\_ et sportif. (1 mark)

---

e) Relevez DEUX verbes entendus dans le passage. (2 marks)

i. \_\_\_\_\_

ii. \_\_\_\_\_

B. Speaking Practice (Conducted separately)

a) Présente-toi en français. (4 marks)

b) Parle d'un membre de ta famille ou d'un ami. (3 marks)

c) Décris soit le temps dans ta région soit la direction vers ta maison. (3 marks)

8:

a) Complète avec la bonne préposition : (2 marks)

i) La lampe est \_\_\_\_\_ la table. (sur / sous)

b) Classe les mots suivants : (4 marks)

Météo	Maison
le vent	la chaise
la pluie	_____

c) Réécris correctement la phrase : (2 marks)

« est / chambre / le / dans / lit / la »

---

d) Écris deux phrases sur le temps. (2 marks)

i. \_\_\_\_\_

ii. \_\_\_\_\_





April 2026

Time: 2 Hours

Code: CKEAB 004



LEARNER'S DETAILS

Name: \_\_\_\_\_ School: \_\_\_\_\_

Assessment Number: \_\_\_\_\_ School Code: \_\_\_\_\_ Date: \_\_\_\_\_ Signature: \_\_\_\_\_

INSTRUCTIONS TO LEARNERS

- i. Write your name, school, assessment number, date and signature on all answer sheets.
- ii. Answer all questions in the spaces provided.
- iii. Read each question carefully before writing your answer.
- iv. Write your answers neatly and in an organized manner.
- v. Marks are indicated at the end of each question.
- vi. Use relevant Biblical references where necessary.
- vii. Do not write in the margins.
- viii. Check your work before submission.
- ix. Manage your time to complete all questions.

Answer all questions.

1: A student mixes sugar, water, and yeast in a flask. After 30 minutes, bubbles appear and a balloon tied to the flask inflates.

a) Identify the process occurring in the experiment. (1 mark)

\_\_\_\_\_

b) Name the gas produced during this process. (1 mark)

\_\_\_\_\_

c) State one method to test for the gas produced. (2 marks)

\_\_\_\_\_

\_\_\_\_\_

d) State one conclusion the student can make from the experiment. (1 mark)

\_\_\_\_\_

e) Give one practical use of this process in industry. (2 marks)

i. \_\_\_\_\_

ii. \_\_\_\_\_



2: a) Define seed dormancy. (1 mark)

---

---

b) Identify two conditions necessary for seed germination. (2 marks)

i. \_\_\_\_\_

ii. \_\_\_\_\_

c) Differentiate between growth and development in plants. (1 mark)

---

---

---

3: a) Define respiration in living organisms. (1 mark)

---

---

b) List two substrates used in cellular respiration. (2 marks)

i. \_\_\_\_\_

ii. \_\_\_\_\_

c) Give two differences between aerobic and anaerobic respiration. (4 marks)

AEROBIC RESPIRATION	ANAEROBIC RESPIRATION

d) State two uses of anaerobic respiration in daily life or industry. (2 marks)

i. \_\_\_\_\_

ii. \_\_\_\_\_

e) Mention one energy-related importance of respiration to living organisms. (2 marks)

---

---

---

4: A group sets up an experiment with a leafy plant, cobalt chloride paper, and a bell jar.

a) Name the process being investigated. (1 mark)

---



b) Name the tissue responsible for water transport. (1 mark)

\_\_\_\_\_

c) List three factors affecting transpiration. (3 marks)

i. \_\_\_\_\_

ii. \_\_\_\_\_

iii. \_\_\_\_\_

d) State three importance of transpiration in plants. (3 marks)

i. \_\_\_\_\_

ii. \_\_\_\_\_

iii. \_\_\_\_\_

5: A student eats a meal of rice, meat, and vegetables.

a) Name two regions where digestion occurs. (2 marks)

i. \_\_\_\_\_

ii. \_\_\_\_\_

b) Identify two enzymes involved in digestion. (2 marks)

i. \_\_\_\_\_

ii. \_\_\_\_\_

c) Give one food type digested by each enzyme named above. (2 marks)

i. \_\_\_\_\_

ii. \_\_\_\_\_

d) State two adaptations of the small intestine that make absorption efficient. (2 marks)

i. \_\_\_\_\_

ii. \_\_\_\_\_

e) Name two parts of the digestive system labelled A and C in the diagram. (2 marks)

A: \_\_\_\_\_

C: \_\_\_\_\_

f) Explain the role of enzymes in digestion. (5 marks)

\_\_\_\_\_  
\_\_\_\_\_  
\_\_\_\_\_  
\_\_\_\_\_

6: Name the following specialized animal cells:

Q: Cell that transports oxygen \_\_\_\_\_

R: Cell that transmits electrical impulses \_\_\_\_\_



7: Arrange the following from smallest to largest: tissues, organism, organs, cells, organ systems.

---

---

8: A student observes a plant cell under a microscope.

a) Name two types of microscopes that can be used to study cells. (2 marks)

i. \_\_\_\_\_

ii. \_\_\_\_\_

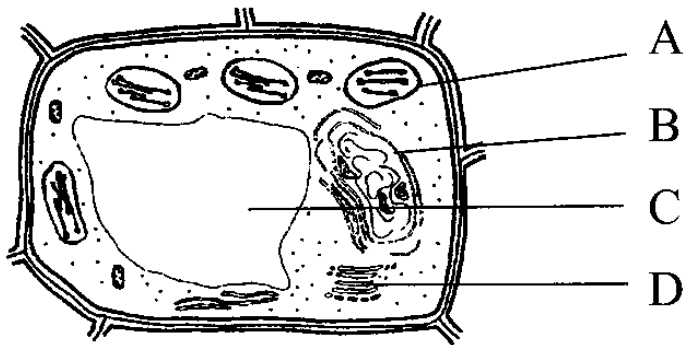
b) State one difference between a light microscope and an electron microscope. (1 mark)

---

---

---

c) Identify the parts A, B, C of a plant cell. (3 marks)



A: \_\_\_\_\_ B: \_\_\_\_\_ C: \_\_\_\_\_

d) State one function of each part named above. (4 marks)

A: \_\_\_\_\_

B: \_\_\_\_\_

C: \_\_\_\_\_

9: During a practical, students notice plants near sunlight grow taller than those in shade.

a) Give two skills acquired when studying General Science. (2 marks)

i. \_\_\_\_\_

ii. \_\_\_\_\_

b) State two methods scientists can use to collect evidence. (2 marks)

i. \_\_\_\_\_

ii. \_\_\_\_\_

c) Give two reasons why evidence collection is important. (2 marks)

i. \_\_\_\_\_

ii. \_\_\_\_\_



d) State two ways General Science helps in environmental conservation. (2 marks)

i. \_\_\_\_\_

ii. \_\_\_\_\_

e) Give two examples of modern technology influenced by scientific knowledge. (2 marks)

i. \_\_\_\_\_

ii. \_\_\_\_\_

10: Match the branch of General Science with its focus:

Branch	Focus
Biology	
Chemistry	
Physics	

11: a) Define General Science. (2 marks)

\_\_\_\_\_  
\_\_\_\_\_

b) State two importance of studying General Science in daily life. (4 marks)

i. \_\_\_\_\_

ii. \_\_\_\_\_

c) Mention two careers linked to General Science. (4 marks)

i. \_\_\_\_\_

ii. \_\_\_\_\_

d) State two skills learners develop through studying General Science. (5 marks)

i. \_\_\_\_\_

ii. \_\_\_\_\_

iii. \_\_\_\_\_

iv. \_\_\_\_\_

v. \_\_\_\_\_

12: a) Name two plant growth hormones. (2 marks)

i. \_\_\_\_\_

ii. \_\_\_\_\_

b) Explain the role of plant hormones in growth. (5 marks)

\_\_\_\_\_  
\_\_\_\_\_  
\_\_\_\_\_  
\_\_\_\_\_  
\_\_\_\_\_





April 2026

Time: 2 Hours

Code: CKEAB 004



LEARNER'S DETAILS

Name: \_\_\_\_\_ School: \_\_\_\_\_

Assessment Number: \_\_\_\_\_ School Code: \_\_\_\_\_ Date: \_\_\_\_\_ Signature: \_\_\_\_\_

INSTRUCTIONS TO LEARNERS

- i. Write your name, school, assessment number, signature and date on all answer sheets provided.
- ii. Answer all questions in the spaces provided.
- iii. Read every question carefully before attempting.
- iv. Ensure your answers are clear, organized, and neatly written.
- v. Marks for each question are indicated.
- vi. Use relevant examples where appropriate.
- vii. Manage your time to complete the paper.

SECTION A: THEORY (80 MARKS)

1. A learner collected rock samples from different areas and observed their properties.

a) Define a rock. (2 marks)

\_\_\_\_\_  
\_\_\_\_\_

b) Classify the following rocks according to their formation process: Granite, Basalt, Sandstone, Marble, Slate, Limestone. (6 marks)

Igneous Rocks	Sedimentary Rocks	Metamorphic Rocks

c) Describe ONE feature that distinguishes extrusive igneous rocks from intrusive igneous rocks. (1 mark)

\_\_\_\_\_  
\_\_\_\_\_

d) Name TWO regions in Kenya where metamorphic rocks are commonly found. (2 marks)

i. \_\_\_\_\_

ii. \_\_\_\_\_



e) Outline TWO ways in which rocks are useful to Kenyans in daily life or industry. (2 marks)

i. \_\_\_\_\_

ii. \_\_\_\_\_

f) Explain TWO methods used by geographers to study rocks in the field. (2 marks)

i. \_\_\_\_\_

ii. \_\_\_\_\_

g) Name the metamorphic rock formed when each of the following rocks is subjected to heat and pressure:

a) Limestone → \_\_\_\_\_

b) Shale → \_\_\_\_\_

c) Sandstone → \_\_\_\_\_

d) Coal → \_\_\_\_\_

e) Granite → \_\_\_\_\_

h) State TWO characteristics of sedimentary rocks. (3 marks)

i. \_\_\_\_\_

ii. \_\_\_\_\_

iii. \_\_\_\_\_

2. A class conducted a field study in a local town observing settlements, transport, rivers, and markets.

a) Define Geography. (2 marks)

\_\_\_\_\_  
\_\_\_\_\_

b) Name TWO main branches of Geography. (2 marks)

i. \_\_\_\_\_

ii. \_\_\_\_\_

c) From the activities observed, list ONE that falls under Human Geography and ONE under Physical Geography. (2 marks)

Human Geography: \_\_\_\_\_

Physical Geography: \_\_\_\_\_

d) Give TWO ways studying Geography can help the community practice sustainable development. (2 marks)

i. \_\_\_\_\_

ii. \_\_\_\_\_

e) Explain TWO relationships between Geography and Environmental Science. (2 marks)

i. \_\_\_\_\_

ii. \_\_\_\_\_

f) Identify TWO careers related to Geography. (2 marks)

i. \_\_\_\_\_

ii. \_\_\_\_\_



g) State TWO factors a learner should consider when choosing a Geography-related career. (2 marks)

i. \_\_\_\_\_

ii. \_\_\_\_\_

3. Study the map of Kisumu East (1:50,000), sheet 116/2 provided and answer the following questions.

(a) i) Convert the ratio scale of the map to into a statement scale. (2 marks)

\_\_\_\_\_

\_\_\_\_\_

(ii) Give six figure grid reference of the trigonometrical station 1154 SKP 21 in the southern part of the area covered by the map. (2 marks)

\_\_\_\_\_

\_\_\_\_\_

(iii) What is the bearing of Rabuor market from Air photo Principal point in **GR 0986**? (2 marks)

\_\_\_\_\_

\_\_\_\_\_

(iv) What is the length in kilometres of the section of railway line west of the easting 00 to Kisumu station? (2 marks)

\_\_\_\_\_

\_\_\_\_\_

(v) Give **three** drainage features in the area covered by the map. (3 marks)

\_\_\_\_\_

\_\_\_\_\_

(b) Describe the relief of the area covered by the map. (4 marks)

\_\_\_\_\_

\_\_\_\_\_

\_\_\_\_\_

\_\_\_\_\_

(c) Citing evidence from the map, give **two** factors that influence cultivation of sugarcane in the area covered by the map. (4 marks)

\_\_\_\_\_

\_\_\_\_\_

(d) Identify **three** social activities carried out within Kisumu municipality. Give evidence. (6 marks)

\_\_\_\_\_

\_\_\_\_\_

\_\_\_\_\_

\_\_\_\_\_



4. The table below shows the rainfall and temperature data for **Station Y** for one year.

Month	Jan	Feb	Mar	Apr	May	Jun	Jul	Aug	Sep	Oct	Nov	Dec
Rainfall (mm)	5	10	33	40	60	100	75	40	30	15	5	5
Temperature (°C)	23	24	25	27	27	29	28	27	26	25	24	24

**a) Calculations**

i. Calculate the annual temperature range.

ii. Find the mean monthly temperature.

iii. Determine the annual rainfall.

**b) Draw a combined line and bar graph (polygraph) to represent the data.**

**c) Describe the characteristics of the polygraph.**

- i. \_\_\_\_\_
- ii. \_\_\_\_\_



iii. \_\_\_\_\_

d) Apart from choosing and labeling the vertical scales for rainfall and temperature, state four other steps to be followed in constructing a polygraph.

i. \_\_\_\_\_

ii. \_\_\_\_\_

iii. \_\_\_\_\_

iv. \_\_\_\_\_

e) Give one disadvantage of this type of graph.

\_\_\_\_\_

\_\_\_\_\_

5. A digital map shows roads, rivers, towns, and schools on a computer screen.

a) Define Geographic Information System (GIS). (2 marks)

\_\_\_\_\_

\_\_\_\_\_

b) Distinguish between GIS and GPS. (3 marks)

\_\_\_\_\_

\_\_\_\_\_

\_\_\_\_\_

c) Name THREE components of GIS. (3 marks)

i. \_\_\_\_\_

ii. \_\_\_\_\_

iii. \_\_\_\_\_

d) Give THREE ways GIS is applied in geographical studies. (3 marks)

i. \_\_\_\_\_

ii. \_\_\_\_\_

iii. \_\_\_\_\_

6. A meteorologist visited the school to give a talk on weather monitoring.

a) Name the branch of Geography that studies climate and weather. (1 mark)

\_\_\_\_\_

b) Identify THREE instruments used to measure weather variables and match them to their function. (3 marks)

Instrument	Function
i.	



ii.

c) State TWO importance of Geography in everyday life. (2 marks)

i. \_\_\_\_\_

ii. \_\_\_\_\_

d) Give TWO ways Geography helps in disaster preparedness and management. (2 marks)

i. \_\_\_\_\_

ii. \_\_\_\_\_





April 2026

Time: 2 Hours

Code: CKEAB 004



**LEARNER'S DETAILS**

Name: \_\_\_\_\_ School: \_\_\_\_\_

Assessment Number: \_\_\_\_\_ School Code: \_\_\_\_\_ Date: \_\_\_\_\_ Signature: \_\_\_\_\_

**INSTRUCTIONS TO LEARNERS**

- i. Write your name, school, assessment number, signature and date on all answer sheets.
- ii. Answer all questions in the spaces provided.
- iii. Read each question carefully before answering.
- iv. Use neat, clear, and well-organized writing.
- v. Do not write in the margin.
- vi. Check your work before submission.
- vii. Manage your time carefully to complete the exam.

**SECTION A: HISTORY (35 MARKS)**

1. a) Differentiate between the following terms nationalism and socialism . (2 marks)

---

---

---

b) State four factors that led to the rise of African nationalism in Africa. (4 marks)

i. \_\_\_\_\_

ii. \_\_\_\_\_

iii. \_\_\_\_\_

iv. \_\_\_\_\_



c) State the achievement of the following African nationalist:

i. Kwame Nkrumah

---

---

---

ii. Jomo Kenyatta (2 marks)

---

---

---

2. a) Give three reasons for the convening of the Berlin Conference. (3 marks)

i. \_\_\_\_\_

ii. \_\_\_\_\_

iii. \_\_\_\_\_

b) State three agreements reached during the conference. (3 marks)

i. \_\_\_\_\_

ii. \_\_\_\_\_

iii. \_\_\_\_\_

3. a) Outline four reasons for the colonisation of Africa by European powers. (4 marks)

i. \_\_\_\_\_

ii. \_\_\_\_\_

iii. \_\_\_\_\_

iv. \_\_\_\_\_

b) Match the following African countries with their colonial masters: (2 marks)

Country	Colonial Master
Ghana	
Kenya	
Mozambique	
Senegal	



4. a) Identify the supreme ruler of the Buganda Kingdom. (1 mark)

\_\_\_\_\_

b) State two functions of each of the following officials: (4 marks)

i) Katikiro

i. \_\_\_\_\_

ii. \_\_\_\_\_

iii. \_\_\_\_\_

iv. \_\_\_\_\_

ii) Omulamuzi

i. \_\_\_\_\_

ii. \_\_\_\_\_

iii. \_\_\_\_\_

iv. \_\_\_\_\_

c) Define the following titles in the Buganda administration: (2 marks)

- Omwanika

i. \_\_\_\_\_

ii. \_\_\_\_\_

- Bataka

i. \_\_\_\_\_

ii. \_\_\_\_\_

5. a) State three similarities and two differences between the Nyamwezi Chiefdom and the Wanga Kingdom. (5 marks)

Similarities

i. \_\_\_\_\_

ii. \_\_\_\_\_

iii. \_\_\_\_\_

iv. \_\_\_\_\_



## Differences

Nyamwezi chiefdom	Wanga kingdom

b) Explain three characteristics of the Neolithic Period. (3 marks)

- i. \_\_\_\_\_
- ii. \_\_\_\_\_
- iii. \_\_\_\_\_

### SECTION B: CITIZENSHIP (35 MARKS)

6. a) Define the term general election. (2 marks)

---

---

b) Outline four principles of Kenya's electoral system. (4 marks)

- i. \_\_\_\_\_
- ii. \_\_\_\_\_
- iii. \_\_\_\_\_
- iv. \_\_\_\_\_

c) State four functions of the Independent Electoral and Boundaries Commission (IEBC). (4 marks)

- i. \_\_\_\_\_
- ii. \_\_\_\_\_
- iii. \_\_\_\_\_
- iv. \_\_\_\_\_



7. a) Name four elective positions contested during general elections in Kenya. (4 marks)

- i. \_\_\_\_\_
- ii. \_\_\_\_\_
- iii. \_\_\_\_\_
- iv. \_\_\_\_\_

b) State two stages in the electoral process. (2 marks)

- i. \_\_\_\_\_
- ii. \_\_\_\_\_

8. a) Define public resources. (2 marks)

\_\_\_\_\_

\_\_\_\_\_

b) Name three types of public resources. (3 marks)

- i. \_\_\_\_\_
- ii. \_\_\_\_\_
- iii. \_\_\_\_\_

c) State one consequence of misuse of public resources. (1 mark)

\_\_\_\_\_

\_\_\_\_\_

9. a) Name three major language groups in Kenya. (3 marks)

- i. \_\_\_\_\_
- ii. \_\_\_\_\_
- iii. \_\_\_\_\_
- iv. \_\_\_\_\_

b) State four reasons for the migration of communities in Kenya. (4 marks)

- i. \_\_\_\_\_
- ii. \_\_\_\_\_
- iii. \_\_\_\_\_
- iv. \_\_\_\_\_



**10. a) Define pastoralism. (2 marks)**

- i. \_\_\_\_\_
- ii. \_\_\_\_\_
- iii. \_\_\_\_\_
- iv. \_\_\_\_\_

**b) Identify two pastoralist communities in East Africa. (2 marks)**

- i. \_\_\_\_\_
- ii. \_\_\_\_\_

**c) State two challenges faced by pastoralist communities. (2 marks)**

- i. \_\_\_\_\_
- ii. \_\_\_\_\_





**April 2026**

**Time: 2 Hours**

**Code: CKEAB 004**



**LEARNER'S DETAILS**

**Name:** \_\_\_\_\_ **School:** \_\_\_\_\_

**Assessment Number:** \_\_\_\_\_ **School Code:** \_\_\_\_\_ **Date:** \_\_\_\_\_ **Signature:** \_\_\_\_\_

**INSTRUCTIONS TO LEARNERS**

- i. Schreiben Sie Ihren Namen, Schule, Bewertungsnummer, Unterschrift und Datum auf allen Antwortbögen.
- ii. Beantworten Sie alle Fragen in den vorgesehenen Feldern.
- iii. Diese Prüfung besteht aus Abschnitt A (50 Punkte) und Abschnitt B (50 Punkte), insgesamt 100 Punkte.
- iv. Beantworten Sie alle Fragen in Abschnitt A und B.
- v. Schreiben Sie klar, gut lesbar und in vollständigen Sätzen.
- vi. Verwenden Sie Beispiele, wo nötig.
- vii. Überprüfen Sie Grammatik und Rechtschreibung.

**SECTION A: SPEAKING & ORAL SKILLS (10 MARKS)**

*Question 1: Conversation & Pronunciation (10 Marks)*

The teacher will read the following dialogue twice. Answer the questions below.

Clara: Hallo! Wie geht es dir heute?

David: Mir geht es gut, danke. Und dir?

Clara: Auch gut. Wie heißt dein Bruder?

David: Mein Bruder heißt Max.

a) Nenne zwei deutsche Begrüßungen aus dem Dialog. (2 marks)

i. \_\_\_\_\_

ii. \_\_\_\_\_

b) Wie fragt Clara nach dem Namen des Bruders? (2 marks)

i. \_\_\_\_\_

ii. \_\_\_\_\_

c) Was antwortet David auf „Wie geht es dir?“ (2 marks)

i. \_\_\_\_\_

ii. \_\_\_\_\_



d) Schreibe zwei Wörter mit typischen deutschen Lauten aus dem Dialog. (2 marks)

i. \_\_\_\_\_

ii. \_\_\_\_\_

e) Warum ist es wichtig, Aussprache und Betonung zu üben? (2 marks)

i. \_\_\_\_\_

ii. \_\_\_\_\_

## SECTION B: READING COMPREHENSION – HOME (15 MARKS)

Question 2: Lesen – Zuhause

Ich wohne in einer Wohnung. Die Wohnung hat ein Wohnzimmer, zwei Schlafzimmer, eine Küche und ein Badezimmer. Ich habe einen kleinen Balkon. Mein Lieblingszimmer ist das Wohnzimmer, weil es hell und gemütlich ist.

a) Wo wohnt die Person? (2 marks)

\_\_\_\_\_  
\_\_\_\_\_

b) Nenne zwei Zimmer in der Wohnung. (2 marks)

i. \_\_\_\_\_

ii. \_\_\_\_\_

c) Was gibt es auf dem Balkon? (2 marks)

\_\_\_\_\_  
\_\_\_\_\_

d) Welches Zimmer ist das Lieblingszimmer und warum? (2 marks)

\_\_\_\_\_  
\_\_\_\_\_

e) Nenne zwei Gründe, warum ein Zuhause wichtig ist. (3 marks)

i. \_\_\_\_\_

ii. \_\_\_\_\_

iii. \_\_\_\_\_

## SECTION C: (20 MARKS)

Question 3:

a) Konjugiere das Verb „haben“ im Präsens. (4 marks)

i. ich \_\_\_\_\_

ii. du \_\_\_\_\_

iii. er \_\_\_\_\_

iv. wir \_\_\_\_\_



b) Setze die richtigen Personalpronomen ein. (4 marks)

- i. \_\_\_ heiße Jonas.
- ii. \_\_\_ wohnen in Mombasa.
- iii. \_\_\_ ist meine Schwester.
- iv. \_\_\_ seid meine Eltern.

c) Wähle das richtige Possessivpronomen. (4 marks)

- i. Das ist \_\_\_ Vater. (mein / meine)
- ii. \_\_\_ Mutter ist nett. (sein / seine)
- iii. \_\_\_ Haus hat drei Zimmer. (unser / unsere)
- iv. \_\_\_ Brüder sind freundlich. (ihr / ihre)

d) Bilde Fragen mit W-Wörtern. (4 marks)

- i. \_\_\_ heißt dein Freund?
- ii. \_\_\_ geht ihr zur Schule?

e) Beantworte die Fragen mit Ja oder Nein. (4 marks)

- i. Hast du Haustiere?
- ii. Wohnst du in einem Haus?

**SECTION D: WRITING – (15 MARKS)**

**Question 4: Mein Zuhause**

Schreibe einen Text über deine Wohnung oder dein Haus (80–100 Wörter). Dein Text soll enthalten:

- Wo du wohnst
- Wie viele Zimmer es gibt
- Dein Lieblingszimmer
- Eine kurze Beschreibung von Möbeln oder Besonderheiten

---

---

---

---

---

**SECTION E:– FAMILY (10 MARKS)**

**Question 5: Lesen – Familie**

Ich heiße Sophie. Ich bin 16 Jahre alt. Ich habe einen Bruder und eine Schwester. Meine Eltern heißen Michael und Claudia. Wir essen oft zusammen und gehen manchmal am Wochenende spazieren.

a) Wie alt ist Sophie? (2 marks)

---

---



b) Nenne zwei Familienmitglieder von Sophie. (2 marks)

i. \_\_\_\_\_

ii. \_\_\_\_\_

c) Wie viele Geschwister hat Sophie? (2 marks)

\_\_\_\_\_  
\_\_\_\_\_

d) Was machen sie oft zusammen? (2 marks)

\_\_\_\_\_  
\_\_\_\_\_

e) Warum ist Familie wichtig laut dem Text? (2 marks)

i. \_\_\_\_\_

ii. \_\_\_\_\_

## **SECTION F: SPEAKING & ORAL ASSESSMENT (10 MARKS)**

### **Question 6: Dialog & Numbers**

Die Prüfer beurteilen die Schüler in folgenden Bereichen:

a) Führe einen Dialog über deine Familie oder dein Zuhause. (4 marks)

b) Zähle die Zahlen von 30 bis 100 korrekt. (2 marks)

c) Nenne vier Farben korrekt. (2 marks)

d) Sage Preise und reagiere darauf. (2 marks)





April 2026

Time: 2 Hours

Code: CKEAB 004



LEARNER'S DETAILS

Name: \_\_\_\_\_ School: \_\_\_\_\_

Assessment Number: \_\_\_\_\_ School Code: \_\_\_\_\_ Date: \_\_\_\_\_ Signature: \_\_\_\_\_

INSTRUCTIONS TO LEARNERS

- Answer ALL questions.

1. A county government is planning affordable housing for young families.

a) Explain four factors that should be considered when selecting a suitable house for a family. (4 marks)

i. \_\_\_\_\_

ii. \_\_\_\_\_

iii. \_\_\_\_\_

iv. \_\_\_\_\_

b) Describe two social benefits of living in a well-planned residential area. (2 marks)

i. \_\_\_\_\_

ii. \_\_\_\_\_

c) State two responsibilities of a family in maintaining their house. (2 marks)

i. \_\_\_\_\_

ii. \_\_\_\_\_

2. During a practical lesson, a learner suffered a minor burn in the kitchen.

a) Outline the correct procedure for giving first aid to a person with a minor burn. (4 marks)

i. \_\_\_\_\_

ii. \_\_\_\_\_

iii. \_\_\_\_\_

iv. \_\_\_\_\_



b) Identify three possible causes of burns at home. (3 marks)

i. \_\_\_\_\_.

ii. \_\_\_\_\_.

iii. \_\_\_\_\_.

c) Explain three measures that can reduce accidents in the kitchen. (3 marks)

i. \_\_\_\_\_.

ii. \_\_\_\_\_.

iii. \_\_\_\_\_.

3. A health officer was invited to talk to learners about adolescence.

a) Differentiate between physical and emotional changes during adolescence. (4 marks)

\_\_\_\_\_  
\_\_\_\_\_  
\_\_\_\_\_  
\_\_\_\_\_

b) Discuss two challenges adolescents may face during puberty. (2 marks)

i. \_\_\_\_\_.

ii. \_\_\_\_\_.

c) Suggest two ways adolescents can maintain good reproductive health. (2 marks)

i. \_\_\_\_\_.

ii. \_\_\_\_\_.

4. A nutritionist visited your school to educate learners about healthy eating.

a) Classify nutrients into body-building, energy-giving and protective foods, giving two examples in each case. (6 marks)

Body building food	Energy giving food	Protective food



b) Explain two consequences of protein deficiency in the body. (2 marks)

i. \_\_\_\_\_

ii. \_\_\_\_\_

c) Describe two advantages of enriching staple foods through fortification. (2 marks)

i. \_\_\_\_\_

ii. \_\_\_\_\_

5. A learner prepared a meal using different cooking methods.

a) Compare moist heat and dry heat methods of cooking, giving two examples for each. (4 marks)

\_\_\_\_\_

\_\_\_\_\_

\_\_\_\_\_

\_\_\_\_\_

b) Explain three effects of cooking on food nutrients. (3 marks)

i. \_\_\_\_\_

ii. \_\_\_\_\_

iii. \_\_\_\_\_

c) Describe three rules of personal hygiene to observe during food preparation. (3 marks)

i. \_\_\_\_\_

ii. \_\_\_\_\_

iii. \_\_\_\_\_

d) Outline two methods of cleaning wooden kitchen equipment. (2 marks)

i. \_\_\_\_\_

ii. \_\_\_\_\_

e) Explain how proper storage of sharp tools improves kitchen safety. (2 marks)

i. \_\_\_\_\_

ii. \_\_\_\_\_



6. A family is constructing a modern kitchen.

a) Describe the work triangle principle in kitchen design. (3 marks)

i. \_\_\_\_\_

ii. \_\_\_\_\_

iii. \_\_\_\_\_

b) Explain three advantages of an L-shaped kitchen layout. (3 marks)

i. \_\_\_\_\_

ii. \_\_\_\_\_

iii. \_\_\_\_\_

c) Identify four major kitchen equipment found in a modern kitchen. (4 marks)

i. \_\_\_\_\_

ii. \_\_\_\_\_

iii. \_\_\_\_\_

iv. \_\_\_\_\_

d) State two safety precautions when using electrical kitchen appliances. (2 marks)

i. \_\_\_\_\_

ii. \_\_\_\_\_

7. Food from a school event caused stomach upset among some learners.

a) Explain the difference between food contamination and food poisoning. (2 marks)

\_\_\_\_\_

\_\_\_\_\_

\_\_\_\_\_

b) mention two symptoms of food poisoning

i. \_\_\_\_\_

ii. \_\_\_\_\_



c) State three causes of food contamination. (3 marks)

- i. \_\_\_\_\_.
- ii. \_\_\_\_\_.
- iii. \_\_\_\_\_.

d) Suggest three methods of preserving food at home. (3 marks)

- i. \_\_\_\_\_.
- ii. \_\_\_\_\_.
- iii. \_\_\_\_\_.
- iv. \_\_\_\_\_.

8. A learner is interested in pursuing a career in Foods and Nutrition.

a) Discuss four skills required for success in food-related careers. (4 marks)

- i. \_\_\_\_\_.
- ii. \_\_\_\_\_.
- iii. \_\_\_\_\_.
- iv. \_\_\_\_\_.

b) Explain four career opportunities available in the field of Home Science. (4 marks)

- i. \_\_\_\_\_.
- ii. \_\_\_\_\_.
- iii. \_\_\_\_\_.
- iv. \_\_\_\_\_.





April 2026

Time: 2 Hours

Code: CKEAB 004



LEARNER'S DETAILS

Name: \_\_\_\_\_ School: \_\_\_\_\_

Assessment Number: \_\_\_\_\_ School Code: \_\_\_\_\_ Date: \_\_\_\_\_ Signature: \_\_\_\_\_

INSTRUCTIONS TO LEARNERS

- i. Write your name, school, assessment number, signature, and date on all answer sheets.
- ii. Answer all questions in the spaces provided.
- iii. Read each question carefully before answering.
- iv. Ensure answers are clear, neat, and well-organized.
- v. Do not write in the margins.
- vi. Check your work before submitting.
- vii. Manage your time to complete all questions.

SECTION A: THEORY (70 MARKS)

QUESTION 1:

(a) Identify one major scripture for each of the following religions: (4 marks)

i. Hinduism: \_\_\_\_\_

ii. Jainism: \_\_\_\_\_

iii. Buddhism: \_\_\_\_\_

iv. Sikhism: \_\_\_\_\_

(b) Outline two difficulties encountered in preserving religious scriptures. (4 marks)

i. \_\_\_\_\_

ii. \_\_\_\_\_

(c) State two ways in which scriptures encourage harmony in society. (2 marks)

i. \_\_\_\_\_

ii. \_\_\_\_\_

(d) Explain one reason why religious texts are important for personal and communal life. (3 marks)

\_\_\_\_\_

\_\_\_\_\_

\_\_\_\_\_



(e) Name two scholars or leaders who contributed to the interpretation of religious scriptures. (2 marks)

i. \_\_\_\_\_

ii. \_\_\_\_\_

**QUESTION 2:**

(a) Name four Sikh Gurus studied in class. (4 marks)

i. \_\_\_\_\_

ii. \_\_\_\_\_

iii. \_\_\_\_\_

iv. \_\_\_\_\_

(b) State two social contributions made by the Sikh Gurus. (2 marks)

i. \_\_\_\_\_

ii. \_\_\_\_\_

(c) Explain one teaching of the Gurus that helps maintain communal safety. (2 marks)

\_\_\_\_\_

\_\_\_\_\_

\_\_\_\_\_

\_\_\_\_\_

(d) List two ways learners can apply the teachings of Sikh Gurus in school and home life. (2 marks)

i. \_\_\_\_\_

ii. \_\_\_\_\_

**QUESTION 3:**

(a) Define the Buddhist understanding of Paramatma as Dhamma. (4 marks)

\_\_\_\_\_

\_\_\_\_\_

\_\_\_\_\_

(b) Name two Buddhas from the past or future and explain how their example inspires faith. (4 marks)

i. \_\_\_\_\_

ii. \_\_\_\_\_

(c) Identify three qualities of a Buddha and explain how one quality strengthens personal belief. (5 marks)

i. \_\_\_\_\_

ii. \_\_\_\_\_

iii. \_\_\_\_\_

(d) Give two ways Buddhist teachings promote ethical behavior in modern society. (2 marks)

i. \_\_\_\_\_

ii. \_\_\_\_\_



**QUESTION 4:**

(a) List five Jain Tirthankars studied. (5 marks)

- i. \_\_\_\_\_
- ii. \_\_\_\_\_
- iii. \_\_\_\_\_
- iv. \_\_\_\_\_
- v. \_\_\_\_\_

(b) State one major contribution of any three Tirthankars. (6 marks)

Tirthankar	Contribution
i.	
ii.	
iii.	

(c) Explain two ways in which Tirthankar teachings benefit society. (4 marks)

- i. \_\_\_\_\_
- ii. \_\_\_\_\_

**QUESTION 5:**

(a) Explain what is meant by the Manifestation of Paramatma. (4 marks)

---

---

---

(b) Name the three members of the Trimurti and state one role of each. (6 marks)

- i. \_\_\_\_\_
- ii. \_\_\_\_\_
- iii. \_\_\_\_\_

(c) Choose two Dashavatars and state one lesson learned from each for personal and social development. (4 marks)

- i. \_\_\_\_\_
- ii. \_\_\_\_\_

(d) Suggest three practical ways learners can promote Dashavatar teachings in daily life. (3 marks)

- i. \_\_\_\_\_
- ii. \_\_\_\_\_
- iii. \_\_\_\_\_





April 2026

Time: 2 Hours

Code: CKEAB 004



LEARNER'S DETAILS

Name: \_\_\_\_\_ School: \_\_\_\_\_

Assessment Number: \_\_\_\_\_ School Code: \_\_\_\_\_ Date: \_\_\_\_\_ Signature: \_\_\_\_\_

INSTRUCTIONS TO LEARNERS

i. Answer all questions.

SECTION A: THEORY (80 MARKS)

1. A student is preparing a research report for the Science Club.

(a) Outline four steps to insert an automatic Table of Contents in a word processor. (4 marks)

i. \_\_\_\_\_

ii. \_\_\_\_\_

iii. \_\_\_\_\_

iv. \_\_\_\_\_

(b) Explain the purpose of the following advanced features: (5 marks)

i. Mail Merge: \_\_\_\_\_

ii. Track Changes: \_\_\_\_\_

iii. Hyperlink: \_\_\_\_\_

(c) Define the following word processing terms: (4 marks)

i. Character Formatting: \_\_\_\_\_

\_\_\_\_\_

\_\_\_\_\_

ii. Page Layout: \_\_\_\_\_

\_\_\_\_\_

\_\_\_\_\_

(d) List three editing tools in a word processor used to correct errors. (3 marks)

i. \_\_\_\_\_

ii. \_\_\_\_\_

iii. \_\_\_\_\_



(e) Describe four steps to save a document for the first time. (2 marks)

- i. \_\_\_\_\_
- ii. \_\_\_\_\_
- iii. \_\_\_\_\_
- iv. \_\_\_\_\_

2. (a) Name four main components of ICT infrastructure in a modern office. (4 marks)

- i. \_\_\_\_\_
- ii. \_\_\_\_\_
- iii. \_\_\_\_\_
- iv. \_\_\_\_\_

(b) Identify three physical strains a person may suffer when using a computer incorrectly. (3 marks)

- i. \_\_\_\_\_
- ii. \_\_\_\_\_
- iii. \_\_\_\_\_

3. You are a computer lab assistant and notice computers are unprotected and poorly managed.

(a) Define an Operating System (OS). (2 marks)

\_\_\_\_\_

\_\_\_\_\_

(b) Identify the operating systems or interfaces described: (4 marks)

- i. GUI on iPhones: \_\_\_\_\_
- ii. Open-source OS for servers: \_\_\_\_\_
- iii. Most common desktop OS: \_\_\_\_\_
- iv. Interface where users type text commands: \_\_\_\_\_

(c) Expand the following abbreviations: (3 marks)

- i. CPU: \_\_\_\_\_
- ii. GUI: \_\_\_\_\_
- iii. OS: \_\_\_\_\_

(d) Write four steps to create a new folder called “ICT\_Assignment” on the desktop. (4 marks)

- i. \_\_\_\_\_
- ii. \_\_\_\_\_
- iii. \_\_\_\_\_
- iv. \_\_\_\_\_



(e) Explain two security measures to protect files on a computer. (4 marks)

i. \_\_\_\_\_

ii. \_\_\_\_\_

(f) List four basic OS manipulations to customize the computer interface. (8 marks)

i. \_\_\_\_\_

ii. \_\_\_\_\_

iii. \_\_\_\_\_

iv. \_\_\_\_\_

4. (a) Name three word processing software suitable for preparing reports. (3 marks)

i. \_\_\_\_\_

ii. \_\_\_\_\_

iii. \_\_\_\_\_

(b) Explain two functions of the cursor in a word processor. (2 marks)

i. \_\_\_\_\_

ii. \_\_\_\_\_

(c) Match the following word processor icons with their functions: (5 marks)

Icon	Function
Undo	
Redo	
Save	

5. The village of Tumaini wants to improve communication between a local clinic and hospital.

(a) Identify four ICT devices that can be used in the clinic. For each, state one function. (4 marks)

i. Device: \_\_\_\_\_ Function: \_\_\_\_\_

ii. Device: \_\_\_\_\_ Function: \_\_\_\_\_

iii. Device: \_\_\_\_\_ Function: \_\_\_\_\_

iv. Device: \_\_\_\_\_ Function: \_\_\_\_\_

(b) Explain three ways ICT can solve community problems like slow healthcare delivery. (3 marks)

i. \_\_\_\_\_

ii. \_\_\_\_\_

iii. \_\_\_\_\_

(c) State one advantage and one disadvantage of using smartphones for health communication. (2 marks)

Advantage: \_\_\_\_\_

Disadvantage: \_\_\_\_\_



(d) Define the following terms: (2 marks)

i. Information: \_\_\_\_\_

ii. Technology: \_\_\_\_\_

6. A school requires a well-formatted environmental report.

(a) Name three features of a good report layout. (3 marks)

i. \_\_\_\_\_

ii. \_\_\_\_\_

iii. \_\_\_\_\_

(b) State two reasons why images are important in a report. (2 marks)

i. \_\_\_\_\_

ii. \_\_\_\_\_

(c) Give two ways of navigating a long document efficiently. (2 marks)

i. \_\_\_\_\_

ii. \_\_\_\_\_

(d) List two word processing formatting tools that help improve readability. (2 marks)

i. \_\_\_\_\_

ii. \_\_\_\_\_





April 2026

Time: 2 Hours

Code: CKEAB 004

**LEARNER'S DETAILS**

Name: \_\_\_\_\_ School: \_\_\_\_\_

Assessment Number: \_\_\_\_\_ School Code: \_\_\_\_\_ Date: \_\_\_\_\_ Signature: \_\_\_\_\_

**INSTRUCTIONS TO LEARNERS**

- i. Write your name, school, assessment number, signature, and date on all answer sheets.
- ii. Answer all questions in the spaces provided.
- iii. Read each question carefully before answering.
- iv. Marks for each question are indicated at the end.
- v. Check your work before submitting.

**SECTION A: THEORY (80 MARKS)**

1. An Islamic charity organisation educates the community on zakat collection.

(a) Identify three difficulties Muslims face when distributing zakat in Kenya. (3 marks)

- i. \_\_\_\_\_
- ii. \_\_\_\_\_
- iii. \_\_\_\_\_

(b) State three ways zakat contributes to socio-economic growth. (3 marks)

- i. \_\_\_\_\_
- ii. \_\_\_\_\_
- iii. \_\_\_\_\_

(c) List four groups of people eligible to receive zakat according to Islamic law. (4 marks)

- i. \_\_\_\_\_
- ii. \_\_\_\_\_
- iii. \_\_\_\_\_
- iv. \_\_\_\_\_

(d) Calculate the zakat payable on KSh 100,000 saved for one year at 2.5%. (2 marks)



(e) State two ways proper zakat management can promote economic development. (2 marks)

i. \_\_\_\_\_

ii. \_\_\_\_\_

2. A community performs funeral rites for a deceased Muslim.

(a) Name four major funeral rites. (4 marks)

i. \_\_\_\_\_

ii. \_\_\_\_\_

iii. \_\_\_\_\_

iv. \_\_\_\_\_

(b) Explain three reasons why performing funeral rites is Fardh Kifayah. (3 marks)

i. \_\_\_\_\_

ii. \_\_\_\_\_

iii. \_\_\_\_\_

(c) State three ways these rites show respect for the deceased. (3 marks)

i. \_\_\_\_\_

ii. \_\_\_\_\_

iii. \_\_\_\_\_

3. Muslims perform Swalatul Jumu'ah and Swalatul 'Idd.

(a) State two conditions required for Swalatul Jumu'ah to be valid. (2 marks)

i. \_\_\_\_\_

ii. \_\_\_\_\_

(b) Identify two differences between Jumu'ah and 'Idd prayers. (4 marks)

i. \_\_\_\_\_

ii. \_\_\_\_\_

(c) Explain two benefits of Swalatul 'Idd to the Muslim community. (4 marks)

i. \_\_\_\_\_

ii. \_\_\_\_\_

4. A lesson focuses on Hadith regarding environmental care, kinship, and brotherhood.

(a) State one teaching from each Hadith: (3 marks)

i. Environment: \_\_\_\_\_

ii. Kinship: \_\_\_\_\_

iii. Brotherhood: \_\_\_\_\_

(b) Explain three ways Muslims can promote brotherhood in society. (3 marks)

i. \_\_\_\_\_

ii. \_\_\_\_\_

iii. \_\_\_\_\_



5. (a) Define the following terms: (2 marks)

i. Isnad:

---

---

ii. Matn:

---

---

(b) State two qualities of a trustworthy Muhaddith. (2 marks)

i. \_\_\_\_\_

ii. \_\_\_\_\_

(c) Identify two criteria used to judge authenticity of a Hadith. (2 marks)

i. \_\_\_\_\_

ii. \_\_\_\_\_

6. (a) Define Asbābu al-Nuzūl. (2 marks)

---

---

(b) Identify three categories of Asbābu al-Nuzūl. (3 marks)

i. \_\_\_\_\_

ii. \_\_\_\_\_

iii. \_\_\_\_\_

(c) State one benefit of studying Asbābu al-Nuzūl. (1 mark)

---

---

7. (a) Differentiate between the following: (4 marks)

i. Muhkamat vs Mutashabihat:

---

---

---

---

ii. Al-‘Am vs Al-Khaas:

---

---

---

---



(b) State two reasons why understanding types of verses is important. (3 marks)

i. \_\_\_\_\_

ii. \_\_\_\_\_

8. Learners study Surah al-Furqan (Q.25:61–77).

(a) Identify two qualities of Allah’s servants mentioned. (2 marks)

i. \_\_\_\_\_

ii. \_\_\_\_\_

(b) Explain three teachings derived from the verses. (3 marks)

i. \_\_\_\_\_

ii. \_\_\_\_\_

iii. \_\_\_\_\_

(c) Describe three practical ways learners can apply these teachings daily. (3 marks)

i. \_\_\_\_\_

ii. \_\_\_\_\_

iii. \_\_\_\_\_

9. (a) State two circumstances that led to compilation during Abu Bakr (R.A.). (2 marks)

i. \_\_\_\_\_

ii. \_\_\_\_\_

(b) Explain two reasons for standardisation during Uthman (R.A.). (4 marks)

i. \_\_\_\_\_

ii. \_\_\_\_\_

(c) Describe two stages involved in compiling the Qur’an. (2 marks)

i. \_\_\_\_\_

ii. \_\_\_\_\_

(d) State two significances of compilation and standardisation. (2 marks)

i. \_\_\_\_\_

ii. \_\_\_\_\_

10. (a) Define diacriticalisation. (2 marks)

\_\_\_\_\_

(b) Identify two circumstances that led to diacriticalisation. (2 marks)

i. \_\_\_\_\_

ii. \_\_\_\_\_

(c) State two significances of diacritical marks. (2 marks)

i. \_\_\_\_\_

ii. \_\_\_\_\_



(d) Identify two types of diacritical marks in the Qur'an. (2 marks)

i. \_\_\_\_\_

ii. \_\_\_\_\_





April 2026

Time: 2 Hours

Code: CKEAB 004



LEARNER'S DETAILS

Name: \_\_\_\_\_ School: \_\_\_\_\_

Assessment Number: \_\_\_\_\_ School Code: \_\_\_\_\_ Date: \_\_\_\_\_ Signature: \_\_\_\_\_

INSTRUCTIONS TO LEARNERS

SECTION A: THEORY (70 MARKS)

1. A researcher conducted a survey along the Kenyan coast and inland water bodies.

a) Differentiate between marine fish and freshwater fish. (2 marks)

---

---

---

---

b) Give three examples of marine fish found along the Kenyan coast. (3 marks)

i. \_\_\_\_\_

ii. \_\_\_\_\_

iii. \_\_\_\_\_

c) Name two freshwater fish reared in inland fisheries in Kenya. (2 marks)

i. \_\_\_\_\_

ii. \_\_\_\_\_

iii. \_\_\_\_\_

d) State one importance of identifying fish species before harvesting. (1 mark)

---

---

2. The government has invested in fish farming projects to improve livelihoods.

a) Outline three factors that limit fish farming in some regions of Kenya. (3 marks)

i. \_\_\_\_\_

ii. \_\_\_\_\_

iii. \_\_\_\_\_



b) Explain two social benefits of aquaculture to rural communities. (4 marks)

i. \_\_\_\_\_

ii. \_\_\_\_\_

c) Suggest one policy measure that can improve aquaculture production. (1 mark)

\_\_\_\_\_  
\_\_\_\_\_

3. During a practical lesson, learners observed various fish harvesting techniques.

a) Identify three traditional fishing methods used in Kenya. (3 marks)

i. \_\_\_\_\_

ii. \_\_\_\_\_

iii. \_\_\_\_\_

b) Describe two modern fishing methods used in commercial fisheries. (2 marks)

i. \_\_\_\_\_

ii. \_\_\_\_\_

c) State three advantages of sustainable fishing practices. (3 marks)

i. \_\_\_\_\_

ii. \_\_\_\_\_

iii. \_\_\_\_\_

4. A fish farmer is constructing a new earthen pond.

a) List four essential components of a standard fish pond. (4 marks)

i. \_\_\_\_\_

ii. \_\_\_\_\_

iii. \_\_\_\_\_

iv. \_\_\_\_\_

b) Explain three routine management practices carried out in a stocked fish pond. (3 marks)

i. \_\_\_\_\_

ii. \_\_\_\_\_

iii. \_\_\_\_\_

5. A county extension officer demonstrated different aquaculture systems.

a) Identify three aquaculture production systems. (3 marks)

i. \_\_\_\_\_

ii. \_\_\_\_\_

iii. \_\_\_\_\_



b) Compare extensive and intensive aquaculture systems under the following: (3 marks)

	Extensive aquaculture system	Intensive aquaculture system
i) Stocking density		
ii) Feeding method		
iii) Production output		

c) State three advantages of cage culture systems. (3 marks)

- i. \_\_\_\_\_
- ii. \_\_\_\_\_
- iii. \_\_\_\_\_

6. A biology student dissected a fish to study its structure.

a) Identify four external features of a typical bony fish. (4 marks)

- i. \_\_\_\_\_
- ii. \_\_\_\_\_
- iii. \_\_\_\_\_
- v. \_\_\_\_\_

b) Name four internal organs of a fish. (4 marks)

- i. \_\_\_\_\_
- ii. \_\_\_\_\_
- iii. \_\_\_\_\_
- v. \_\_\_\_\_

c) Explain the functions of the following:

i) Swim bladder (2 marks)

---

---

ii) Lateral line (2 marks)

---

---

7. An environmentalist studied different water bodies in Kenya.

a) Distinguish between marine and freshwater ecosystems. (2 marks)

---

---

---

---



b) Outline two abiotic factors that affect aquatic life. (2 marks)

i. \_\_\_\_\_

ii. \_\_\_\_\_

c) State two human activities that threaten aquatic ecosystems. (2 marks)

i. \_\_\_\_\_

ii. \_\_\_\_\_

8. A farmer noticed unusual behavior in fish in a pond.

a) State three signs of unhealthy fish. (3 marks)

i. \_\_\_\_\_

ii. \_\_\_\_\_

iii. \_\_\_\_\_

b) Explain two preventive measures against fish diseases. (2 marks)

i. \_\_\_\_\_

ii. \_\_\_\_\_

9. a) Describe the structure of fish gills. (2 marks)

i. \_\_\_\_\_

ii. \_\_\_\_\_

b) Explain how fish obtain oxygen from water. (2 marks)

i. \_\_\_\_\_

ii. \_\_\_\_\_

10. a) Identify two professional careers in fisheries and aquaculture. (2 marks)

i. \_\_\_\_\_

ii. \_\_\_\_\_

b) State one way fisheries support Kenya's national economy. (1 mark)

\_\_\_\_\_

\_\_\_\_\_





April 2026

Time: 2 Hours

Code: CKEAB 004



LEARNER'S DETAILS

Name: \_\_\_\_\_ School: \_\_\_\_\_

Assessment Number: \_\_\_\_\_ School Code: \_\_\_\_\_ Date: \_\_\_\_\_ Signature: \_\_\_\_\_

INSTRUCTIONS TO LEARNERS

Answer all questions in mandarin

SECTION A: WRITTEN (70 Marks)

PART A: READING (20 Marks)

Yuèdú duǎnwén:

Wǒ jiào Wáng Jié, jīnnián shíliù suì. Wǒ zhù zài Nèiluóbì. Wǒ jiā yǒu sì kǒu rén: bàba, māma, mèimei hé wǒ. Wǒ de bàba shì yīshēng, tā zài yīyuàn gōngzuò. Wǒ de māma shì lǎoshī, tā hěn xǐhuān huàhuà. Wǒ de mèimei shí suì, tā shì xuéshēng. Wǒ xǐhuān tī zúqíú hé kànshū, dànshì wǒ bù xǐhuān qǐ zǎo.

A. Huídá wèntí (8 marks)

1. Tā jiào shénme míngzi?
2. Tā jǐ suì?
3. Tā zhù zài nǎlǐ?
4. Shéi xǐhuān huàhuà?

B. Cóng kèwén zhǎo cí (4 marks)

1. Doctor → \_\_\_\_\_
2. Teacher → \_\_\_\_\_
3. Hospital → \_\_\_\_\_
4. Like → \_\_\_\_\_

C. Wánchéng biǎogé (4 marks)

Bàba → \_\_\_\_\_  
Māma → \_\_\_\_\_  
Mèimei → \_\_\_\_\_  
Wáng Jié → \_\_\_\_\_

D. Zhǔtí (4 marks)

Zhè piān wénzhāng de zhǔyào yìsì shì shénme?  
Guānjàn cí: jiātíng, àihào, shēnghuó, zìwǒ jièshào



## PART B: LANGUAGE USE (25 Marks)

### A. Tián rù dài cí (5 marks)

1. \_\_\_ shì Lǐ Míng.
2. \_\_\_ shì wǒ de péngyou.
3. \_\_\_ zhù zài Shànghǎi.
4. \_\_\_ xǐhuān yóuyǒng.
5. \_\_\_ shì lǎoshī.

### B. Tián rù dòng cí (7 marks)

(shì, yǒu, gōngzuò, xǐhuān, zhù, xuéxí)

1. Wǒ \_\_\_ xuéshēng.
2. Wǒ jiā \_\_\_ wǔ kǒu rén.
3. Bàba zài yīyuàn \_\_\_.
4. Jiějie \_\_\_ chānggē.
5. Wǒ \_\_\_ zài chéngshì.
6. Māma \_\_\_ lǎoshī.
7. Wǒmen \_\_\_ Hànyǔ.

### C. Yòng “de” jiégòu (6 marks)

1. Zhè shì wǒ \_\_\_ shūbāo.
2. Tā shì tā \_\_\_ gēge.
3. Wǒmen qù wǒmen \_\_\_ xuéxiào.
4. Nà shì tāmen \_\_\_ fángzi.
5. Tā xǐhuān tā \_\_\_ jiā.
6. Zhè shì wǒ \_\_\_ gǒu.

### D. Xiě wèntí (7 marks)

1. Nǐ xǐhuān Hànyǔ ma?
2. Tā zhù zài nǎlǐ?
3. Nǐ yǒu chǒngwù ma?
4. Tā jǐ suì?
5. Nǐ bàba zuò shénme gōngzuò?
6. Tāmen xǐhuān yùndòng ma?
7. Xuéxiào zài nǎlǐ?

## PART C: WRITING (25 Marks)

Xiě yī piān 80–100 zì de duǎnwén jièshào nǐ hé nǐ de jiārén.

Yāoqiú:

- Míngzi, niánlíng
- Zhù zài nǎlǐ
- Jiārén
- Xǐhuān hé bù xǐhuān
- Yòng: shì, yǒu, zhù, xǐhuān hé “de”
- Zhìshǎo sān gè xíngróngcí



## SECTION B: ORALS (30 Marks)

### PART A: LISTENING (15 Marks)

#### Fāyīn hé shēngdiào (5 marks)

Jiāting  
Xuéxiào  
Yīshēng  
Xīhuān  
Chéngshì

Zhùyì: shēngmǔ, yùnmǔ, shēngdiào, liúlì

#### Tīnglì lǐjiě (10 marks)

Huídá wèntí:

1. Zhǔyào nèiróng shì shénme?
2. Tí dào le shéi?
3. Shéi xǐhuān shénme?
4. Tāmen zhù zài nǎlǐ?
5. Zhè duàn huà de zhǔtí shì shénme?

### PART B: SPEAKING (15 Marks)

#### Kǒutóu jièshào (8 marks)

- Míngzi
- Niánlíng
- Zhùzài dì
- Jiārén
- Àihào

#### Rìcháng duìhuà (7 marks)

1. Nǐ zhù zài nǎlǐ?
2. Nǐ jiā yǒu jǐ kǒu rén?
3. Nǐ xǐhuān shénme yùndòng?
4. Nǐ yǒu chǒngwù ma?
5. Nǐ bàba zuò shénme gōngzuò?
6. Jiàoshi lǐ yǒu shénme?
7. Nǐ xǐhuān Hànyǔ ma? Wèishénme?









*Soma kifungu kifuatacho kisha ujibu maswali.*

Teknolojia ya kisasa imekuwa sehemu muhimu ya maisha ya kila mwanafunzi. Kutokana na uvumbuzi wa mitandao ya kijamii, simu za kisasa na programu mbalimbali, wanafunzi wanapata njia rahisi za kupata taarifa, kushirikiana na wenzake na kukuza vipaji vyao. Hata hivyo, kuna changamoto kama vile matumizi mabaya ya mitandao, upotevu wa muda na kudhuru mahusiano ya kijamii. Ili kushughulikia changamoto hizi, ni muhimu kwa wazazi na walimu kuwaongoza wanafunzi kutumia teknolojia kwa busara na nidhamu.

Maswali:

Eleza lengo kuu la kifungu hiki. (Alama 2)

---

---

Toa faida moja ya teknolojia kwa mwanafunzi. (Alama 2)

---

---

Taja tatizo moja lililotajwa kuhusu matumizi ya teknolojia. (Alama 2)

---

---

Nini suluhisho lililopendekezwa kwa changamoto za teknolojia? (Alama 2)

---

---

Toa neno moja linalomaanisha “kuelekeza” lililotumika kwenye kifungu. (Alama 2)

---

---

## **KAZI YA 2: KUSOMA KWA UFAHAMU**

*Soma kifungu kifuatacho kisha ujibu maswali.*

Mazingira ya shule ni muhimu katika maendeleo ya mwanafunzi. Wanafunzi wanapokuwa na maktaba, madarasa ya kisasa na michezo ya burudani, hujengeka kiakili, kimawazo na kimwili. Pia, walimu wanaposhirikiana na wazazi, wanafunzi hupata malezi bora, stadi za maisha na fursa za kujifunza kwa ubunifu. Jamii pia ina jukumu la kuhakikisha usalama na utulivu ili watoto waweze kujifunza bila hofu. Mazingira bora ya kujifunzia huongeza nidhamu, bidii na ubunifu wa mwanafunzi.

Maswali:

6. Eleza umuhimu wa mazingira bora ya shule kwa mwanafunzi. (Alama 2)

---

---

Taja lengo kuu la kushirikiana kwa walimu na wazazi. (Alama 1)

---

---



Taja watu watatu wanaohitajika kushirikiana ili mwanafunzi ajifunze vizuri. (Alama 3)

a) \_\_\_\_\_

b) \_\_\_\_\_

c) \_\_\_\_\_

Toa kichwa cha kifungu hiki. (Alama 1)

---

---

Eleza ujumbe unaopatikana katika kifungu hiki. (Alama 1)

---

---

### **KAZI YA 3: PENGO**

*Jaza nafasi zilizoachwa wazi kwa maneno sahihi.*

Lugha ni chombo muhimu cha \_\_\_\_\_ (11) katika jamii. Kupitia lugha, watu wanaweza \_\_\_\_\_ (12) hisia, maarifa na maoni yao. Bila lugha, \_\_\_\_\_ (13) huenda yakawa magumu. Ni jukumu la kila mmoja \_\_\_\_\_ (14) lugha yake na kuhakikisha inatumika ipasavyo. Shuleni, wanafunzi hufundishwa \_\_\_\_\_ (15) lugha kwa ufasaha.

### **KAZI YA 4: SARUFI NA MATUMIZI YA LUGHA**

*Bainisha aina ya maneno yaliyoangaziwa:*

a) Wanafunzi wanasoma kwa bidii. (Alama 1) \_\_\_\_\_

b) Walimu wanaongoza shule kwa hekima. (Alama 2) \_\_\_\_\_

Tunga sentensi moja:

a) Nomino ya ngeli ya KI-VI. (Alama 2) \_\_\_\_\_

b) Kitenzi cha wakati uliopita. (Alama 2) \_\_\_\_\_

Badilisha sentensi ifuatayo kwenda wakati uliopo:

a) Mwalimu atawasaidia wanafunzi kusoma. (Alama 3) \_\_\_\_\_

Sahihisha makosa:

a) wanafunzi wanapenda masomo sana. (Alama 4) \_\_\_\_\_

### **KAZI YA 5: KUSOMA KWA UFAHAMU**

*Soma kifungu kifuatacho:*

Kusoma magazeti na vitabu mbalimbali huongeza maarifa na fikra za mwanafunzi. Wanafunzi hupata mtazamo mpana kuhusu dunia, hujenga msamiati bora, na kujenga nidhamu ya kujifunza peke yao. Kusoma vitabu pia huimarisha maadili mema kama uvumilivu, bidii na heshima. Ni jukumu la walimu, wazazi na jamii kuhakikisha wanafunzi wanapata fursa ya kusoma.



Kulingana na kifungu, kusoma huongeza nini? (Alama 1)

---

---

Taja tabia moja nzuri kwa mwanafunzi anayesoma. (Alama 1)

---

---

Eleza jinsi kusoma kunavyoongeza msamiati. (Alama 1)

---

---

Kwa nini mwanafunzi anayesoma vitabu vingi anaweza kujieleza vizuri? (Alama 1)

---

---

Eleza mchango wa kusoma vitabu katika nidhamu ya mwanafunzi. (Alama 1)

---

---

Eleza jinsi kusoma vitabu kunavyomsaidia mwanafunzi kujitegemea. (Alama 2)

---

---

Kwa nini wazazi na walimu wanapaswa kuhimiza kusoma vitabu? Taja hoja MBILI. (Alama 2)

i) \_\_\_\_\_

ii) \_\_\_\_\_

Taja faida za taifa zinazoletwa na utamaduni wa kusoma. (Alama 1)

---

---

Eleza maana ya “mtazamo mpana wa fikra”. (Alama 2)

---

---

Taja neno lenye maana sawa na “maarifa”. (Alama 2)

---

---

Tunga sentensi moja kwa kutumia neno “kujieleza”. (Alama 2)

---

---









Time: Saa 2

ELIMU YA MSINGI WA UMAHIRI CKEAB 003

LEARNER'S DETAILS

Jina: \_\_\_\_\_

Shule: \_\_\_\_\_

Namba ya Tathmini: \_\_\_\_\_ Tarehe: \_\_\_\_\_

Namba ya Shule: \_\_\_\_\_ Saini: \_\_\_\_\_

SWALI LA 1: FASIHI SIMULIZI (ALAMA 10)

Eleza fasihi kwa maneno yako. (Alama 2)

---

---

Eleza maana ya fasihi simulizi. (Alama 2)

---

---

Taja sifa tatu za fasihi simulizi. (Alama 3)

a) \_\_\_\_\_

b) \_\_\_\_\_

c) \_\_\_\_\_

Eleza umuhimu wa fasihi simulizi katika jamii. (Alama 3)

---

---

---

SWALI LA 2: HURAFI NA HEKAYA (ALAMA 10)

Tofautisha hurafa na hekaya. (Alama 4)

---

---

Taja sifa tatu za hekaya au hurafa. (Alama 3)

i) \_\_\_\_\_

ii) \_\_\_\_\_

iii) \_\_\_\_\_



Eleza umuhimu wa hadithi hizi katika jamii. (Alama 3)

i) \_\_\_\_\_

ii) \_\_\_\_\_

iii) \_\_\_\_\_

SWALI LA 3: USHAIRI (ALAMA 10)

Eleza maana ya ushairi. (Alama 2)

\_\_\_\_\_

Taja sifa tatu za ushairi. (Alama 3)

i) \_\_\_\_\_

ii) \_\_\_\_\_

iii) \_\_\_\_\_

Tofautisha ushairi wa arudhi na wa huru. (Alama 3)

\_\_\_\_\_

Eleza dhima mbili za ushairi. (Alama 2)

i) \_\_\_\_\_

ii) \_\_\_\_\_





April 2026

Time: 2 Hours

Code: CKEAB 004



**LEARNER'S DETAILS**

Name: \_\_\_\_\_ School: \_\_\_\_\_

Assessment Number: \_\_\_\_\_ School Code: \_\_\_\_\_ Date: \_\_\_\_\_ Signature: \_\_\_\_\_

**INSTRUCTIONS TO LEARNERS**

**Answer all questions**

**SECTION A: (70 MARKS)**

1. a) List four ways media can be classified according to content delivery. (4 marks)

- i. \_\_\_\_\_
- ii. \_\_\_\_\_
- iii. \_\_\_\_\_
- iv. \_\_\_\_\_

b) Give definitions for the following: (4 marks)

- i. Media content creator: \_\_\_\_\_
- ii. Streaming media: \_\_\_\_\_
- iii. Broadcast media: \_\_\_\_\_
- iv. Media convergence: \_\_\_\_\_

2. a) Name three careers in media technology not including camera operator, editor, or reporter. (3 marks)

- i. \_\_\_\_\_
- ii. \_\_\_\_\_
- iii. \_\_\_\_\_

b) Explain the role of a social media content creator in an organization. (1 mark)

\_\_\_\_\_  
\_\_\_\_\_

c) State two ways media personnel can maintain professionalism during content creation. (2 marks)

- i. \_\_\_\_\_
- ii. \_\_\_\_\_



3. A media team plans a short documentary.

a) Identify four pre-production documents or tools and explain their use. (4 marks)

TOOL/EQUIPMENT

USE

i. \_\_\_\_\_ : \_\_\_\_\_

ii. \_\_\_\_\_ : \_\_\_\_\_

iii. \_\_\_\_\_ : \_\_\_\_\_

iv. \_\_\_\_\_ : \_\_\_\_\_

b) Outline four steps involved in pre-production. (4 marks)

i. \_\_\_\_\_

ii. \_\_\_\_\_

iii. \_\_\_\_\_

iv. \_\_\_\_\_

c) Explain two benefits of research during pre-production. (4 marks)

i. \_\_\_\_\_

ii. \_\_\_\_\_

4. A news bulletin is being recorded.

a) Identify five production team members. (5 marks)

i. \_\_\_\_\_

ii. \_\_\_\_\_

iii. \_\_\_\_\_

iv. \_\_\_\_\_

v. \_\_\_\_\_

b) State one key responsibility for any four of the personnel above. (4 marks)

i. \_\_\_\_\_

ii. \_\_\_\_\_

iii. \_\_\_\_\_

iv. \_\_\_\_\_

c) Outline three steps followed during the production phase. (3 marks)

i. \_\_\_\_\_

ii. \_\_\_\_\_

iii. \_\_\_\_\_

5. A school video is being edited for broadcast.

a) Name two personnel involved in post-production. (2 marks)

i. \_\_\_\_\_

ii. \_\_\_\_\_



b) Outline three major tasks carried out during post-production. (3 marks)

i. \_\_\_\_\_

ii. \_\_\_\_\_

iii. \_\_\_\_\_

c) Identify two video/audio editing software used. (2 marks)

i. \_\_\_\_\_

ii. \_\_\_\_\_

d) State two advantages of modern editing software. (2 marks)

i. \_\_\_\_\_

ii. \_\_\_\_\_

e) Match the following studio equipment with their use: (3 marks)

Equipment	Use
Tripod	_____
Studio light	_____
Boom mic	_____

6. a) Mention three types of media platforms used for public information. (3 marks)

i. \_\_\_\_\_

ii. \_\_\_\_\_

iii. \_\_\_\_\_

b) Identify four print media formats. (4 marks)

i. \_\_\_\_\_

ii. \_\_\_\_\_

iii. \_\_\_\_\_

iv. \_\_\_\_\_

c) State three roles media plays in society. (3 marks)

i. \_\_\_\_\_

ii. \_\_\_\_\_

iii. \_\_\_\_\_

7. a) Explain two reasons why a media portfolio is important. (2 marks)

i. \_\_\_\_\_

ii. \_\_\_\_\_

b) Outline three ways a media student can present their portfolio. (3 marks)

i. \_\_\_\_\_

ii. \_\_\_\_\_

iii. \_\_\_\_\_



c) Define the term media ethics. (1 mark)

---

---

d) Mention two examples of electronic media programmes. (2 marks)

i. \_\_\_\_\_

ii. \_\_\_\_\_

8. Conceptual understanding

a) Define the following: (4 marks)

i. Media technology:

---

---

ii. Multimedia:

---

---

iii. Traditional media:

---

---

iv. Media distribution:

---

---

b) State three forms of media used for content creation. (3 marks)

i. \_\_\_\_\_

ii. \_\_\_\_\_

iii. \_\_\_\_\_

9. A school plans to create an awareness campaign about environmental conservation using multimedia.

a) List four pre-production steps they must undertake. (4 marks)

i. \_\_\_\_\_

ii. \_\_\_\_\_

iii. \_\_\_\_\_

iv. \_\_\_\_\_

b) Identify four production team members and one task each. (8 marks)

i. \_\_\_\_\_ : \_\_\_\_\_

ii. \_\_\_\_\_ : \_\_\_\_\_

iii. \_\_\_\_\_ : \_\_\_\_\_

iv. \_\_\_\_\_ : \_\_\_\_\_



c) Outline three post-production tasks to finalize the campaign. (6 marks)

i. \_\_\_\_\_

ii. \_\_\_\_\_

iii. \_\_\_\_\_

10. Write FIVE e roles of media technology in the society

i. \_\_\_\_\_

ii. \_\_\_\_\_

iii. \_\_\_\_\_

iv. \_\_\_\_\_

v. \_\_\_\_\_





April 2026

Time: 2 Hours

Code: CKEAB 004



LEARNER'S DETAILS

Name: \_\_\_\_\_ School: \_\_\_\_\_

Assessment Number: \_\_\_\_\_ School Code: \_\_\_\_\_ Date: \_\_\_\_\_ Signature: \_\_\_\_\_

INSTRUCTIONS TO LEARNERS

Answer all questions

SECTION A: THEORY (80 Marks)

Answer all questions in this section.

1. A learner is asked to observe different metal workshop tools. (6 marks)

a) List and define THREE types of hand tools commonly used in metal workshops.

i. \_\_\_\_\_

ii. \_\_\_\_\_

iii. \_\_\_\_\_

b) State TWO reasons why workshop safety is essential when using these tools.

i. \_\_\_\_\_

ii. \_\_\_\_\_

2. A school metal workshop receives a delivery of different metals: iron, copper, aluminum, and steel. (5 marks)

a) Name the metals suitable for making:

i. Conductive wires: \_\_\_\_\_

ii. Cooking utensils: \_\_\_\_\_

iii. Structural beams for buildings: \_\_\_\_\_

iv. Corrosion-resistant roofing sheets: \_\_\_\_\_

b) Distinguish between ferrous and non-ferrous metals in TWO points.

i. \_\_\_\_\_

ii. \_\_\_\_\_

3. A metalworker arranges the workshop poorly, leaving scrap metal and tools on the floor. (4 marks)

a) Outline THREE risks of having a cluttered workshop.

i. \_\_\_\_\_

ii. \_\_\_\_\_

iii. \_\_\_\_\_



b) Mention TWO first aid steps to take if a worker suffers a cut from sharp metal.

i. \_\_\_\_\_

ii. \_\_\_\_\_

4. You are required to use measuring and marking tools before cutting a metal sheet. (5 marks)

a) Identify FIVE tools used for measuring and marking metal.

i. \_\_\_\_\_

ii. \_\_\_\_\_

iii. \_\_\_\_\_

iv. \_\_\_\_\_

v. \_\_\_\_\_

b) Explain the use of any TWO of the tools you have named.

i. \_\_\_\_\_

ii. \_\_\_\_\_

5. a) A learner is instructed to match the tools below to their functions: (5 marks)

Tool	Function
Bench vice	
Grinder	
Hammer	
Screwdriver	
Pliers	

b) State TWO maintenance practices for these tools.

i. \_\_\_\_\_

ii. \_\_\_\_\_

6. a) List FOUR general safety rules a learner should follow when welding metals. (6 marks)

i. \_\_\_\_\_

ii. \_\_\_\_\_

iii. \_\_\_\_\_

iv. \_\_\_\_\_

b) Give TWO possible causes of accidents in a metal workshop.

i. \_\_\_\_\_

ii. \_\_\_\_\_

7. A learner is asked to describe the physical or mechanical properties of metals used in metalwork. (4 marks)

a) State TWO physical properties of metals.

i. \_\_\_\_\_

ii. \_\_\_\_\_



b) State TWO mechanical properties of metals.

i. \_\_\_\_\_

ii. \_\_\_\_\_

8. A metal sheet is to be bent and shaped. (5 marks)

a) Outline THREE purposes of using bench tools in metalwork.

i. \_\_\_\_\_

ii. \_\_\_\_\_

iii. \_\_\_\_\_

b) Mention TWO ways of taking care of bench tools.

i. \_\_\_\_\_

ii. \_\_\_\_\_

9. A workshop uses both ferrous and non-ferrous metals. (4 marks)

a) List THREE examples of ferrous metals.

i. \_\_\_\_\_

ii. \_\_\_\_\_

iii. \_\_\_\_\_

b) List THREE examples of non-ferrous metals.

i. \_\_\_\_\_

ii. \_\_\_\_\_

iii. \_\_\_\_\_

10. a) Describe briefly the process of producing iron from its ore. (4 marks)

i. \_\_\_\_\_

ii. \_\_\_\_\_

iii. \_\_\_\_\_

iv. \_\_\_\_\_

b) State TWO common forms of metal supply in workshops.

i. \_\_\_\_\_

ii. \_\_\_\_\_

11. a) Give THREE ways metals are used in everyday life. (6 marks)

i. \_\_\_\_\_

ii. \_\_\_\_\_

iii. \_\_\_\_\_

b) Explain the importance of maintaining workshop safety for learners and workers.

i. \_\_\_\_\_

ii. \_\_\_\_\_

iii. \_\_\_\_\_



12. A learner is assigned to inspect workshop layout for safety. (6 marks)

a) Outline TWO components of a safe metal workshop layout.

- i. \_\_\_\_\_
- ii. \_\_\_\_\_

b) Mention TWO emergency safety equipment every workshop must have.

- i. \_\_\_\_\_
- ii. \_\_\_\_\_

13. A metalworker needs to use a steel rule, scribe, and try square. (5 marks)

a) State the use of each tool below:

Tool	Use
Steel rule	
Scriber	
Try square	
Centre punch	
Vernier caliper	





April 2026

Time: 2 Hours

Code: CKEAB 004



LEARNER'S DETAILS

Name: \_\_\_\_\_ School: \_\_\_\_\_

Assessment Number: \_\_\_\_\_ School Code: \_\_\_\_\_ Date: \_\_\_\_\_ Signature: \_\_\_\_\_

INSTRUCTIONS TO LEARNERS


Answer all questions

SECTION A: COMPOSITION AND MUSIC THEORY (70 MARKS)

QUESTION 1:

(a) Study the rhythm pattern below:



i) Identify the note value represented by . (1 mark)

\_\_\_\_\_

ii) Explain the meaning of a tie in rhythmic notation. (2 marks)

\_\_\_\_\_  
\_\_\_\_\_

iii) Rewrite the rhythm so that it fits correctly in 3/4 time. (3 marks)

\_\_\_\_\_  
\_\_\_\_\_  
\_\_\_\_\_

iv) Compose a 2-bar rhythm in 4/4 time using semibreves, crotchets and quavers. Notate it on a staff. (4 marks)

\_\_\_\_\_  
\_\_\_\_\_  
\_\_\_\_\_



## QUESTION 2:

(a) Consider the following notes written in treble clef:

G A B C D E F<sup>#</sup> G

i) Identify the key of the scale. (1 mark)

---

ii) State whether the scale is major or minor and give a reason. (2 marks)

---

---

---

iii) Explain the difference between ascending and descending scales. (2 marks)

---

---

---

(b) Compose a 6-bar melody in a major key including:

- A repeated motif
- At least one rest
- Dynamic markings (p, f, mf) (5 marks)

---

---

---

## QUESTION 3:

Given the melody in C major:

C – E – G – F – D – C

a) Identify the interval between C and G. (1 mark)

---



b) Transpose the melody up a major 2nd. (3 marks)

---

---

---

c) Rewrite the transposed melody in bass clef. (2 marks)

---

---

---

d) State two practical uses of transposition in performance. (2 marks)

i) \_\_\_\_\_

ii) \_\_\_\_\_

**QUESTION 4:**

Given the words:

“Kenya yetu ni nchi ya amani”

a) Divide the sentence into syllables. (2 marks)

---

b) Suggest a suitable time signature and explain why. (2 marks)

---

c) Compose a short 2-bar melodic phrase to fit the words. (3 marks)



**QUESTION 5:**

(a) Define the term triad. (2 marks)

---

---

(b) Construct the primary chords in the key of C major. (3 marks)

(c) Harmonize the melody below using I, IV and V chords only:

Melody: C – C – G – A – G – F – E (2 marks)

**QUESTION 6:**

(a) Name two commonly used music notation or composition software programs. (2 marks)

i) \_\_\_\_\_

ii) \_\_\_\_\_

(b) Describe three steps involved in creating a new musical score using software. (3 marks)

i) \_\_\_\_\_

ii) \_\_\_\_\_

iii) \_\_\_\_\_

(c) Explain three advantages of using digital notation software instead of handwritten notation. (3 marks)

i) \_\_\_\_\_

ii) \_\_\_\_\_

iii) \_\_\_\_\_



**SECTION B: PERFORMANCE AND DANCE (30 MARKS)**

**QUESTION 7:**

(a) Identify three characteristics of Kenyan traditional songs. (3 marks)

- i) \_\_\_\_\_
- ii) \_\_\_\_\_
- iii) \_\_\_\_\_

(b) Explain three social functions of traditional music in Kenyan communities. (3 marks)

- i) \_\_\_\_\_
- ii) \_\_\_\_\_
- iii) \_\_\_\_\_

(c) Describe four performance elements important in traditional dance. (4 marks)

- i) \_\_\_\_\_
- ii) \_\_\_\_\_
- iii) \_\_\_\_\_
- iv) \_\_\_\_\_

**QUESTION 8:**

(a) Differentiate between solo and ensemble performance. (2 marks)

(b) State three vocal techniques that improve solo singing. (3 marks)

- i) \_\_\_\_\_
- ii) \_\_\_\_\_
- iii) \_\_\_\_\_

(c) Explain the importance of articulation and phrasing in music performance. (3 marks)



(d) Give two benefits of participating in music performance activities. (2 marks)

i) \_\_\_\_\_

ii) \_\_\_\_\_

**QUESTION 9:**

(a) Classify indigenous instruments into three categories. (3 marks)

i) \_\_\_\_\_

ii) \_\_\_\_\_

iii) \_\_\_\_\_

(b) Describe how sound is produced in one aerophone instrument. (3 marks)

(c) Outline four cultural values preserved through indigenous music. (4 marks)

i) \_\_\_\_\_

ii) \_\_\_\_\_

iii) \_\_\_\_\_

iv) \_\_\_\_\_





April 2026

Time: 2 Hours

Code: CKEAB 004



**LEARNER'S DETAILS**

Name: \_\_\_\_\_ School: \_\_\_\_\_

Assessment Number: \_\_\_\_\_ School Code: \_\_\_\_\_ Date: \_\_\_\_\_ Signature: \_\_\_\_\_

**INSTRUCTIONS TO LEARNERS**

Answer all questions

**SECTION A: THEORY (80 Marks)**

**QUESTION 1: RUGBY (6 MARKS)**

a) Name three types of passes commonly used in rugby. (3 marks)

- i. \_\_\_\_\_
- ii. \_\_\_\_\_
- iii. \_\_\_\_\_

b) Explain two safety rules observed when performing a tackle. (2 marks)

- i. \_\_\_\_\_
- ii. \_\_\_\_\_

c) State one benefit of mastering the side step in rugby. (1 mark)

\_\_\_\_\_  
\_\_\_\_\_

**QUESTION 2: VOLLEYBALL (8 MARKS)**

a) Identify three facilities found in a volleyball court. (3 marks)

- i. \_\_\_\_\_
- ii. \_\_\_\_\_
- iii. \_\_\_\_\_

b) Describe the correct body position when performing a spike. (3 marks)

- i. \_\_\_\_\_
- ii. \_\_\_\_\_
- iii. \_\_\_\_\_

c) List two pieces of equipment used in volleyball. (2 marks)

- i. \_\_\_\_\_
- ii. \_\_\_\_\_



**QUESTION 3: BASKETBALL (10 MARKS)**

a) Identify three zones of a basketball court. (3 marks)

- i. \_\_\_\_\_
- ii. \_\_\_\_\_
- iii. \_\_\_\_\_

b) Outline three defensive techniques used to mark an opponent. (3 marks)

- i. \_\_\_\_\_
- ii. \_\_\_\_\_
- iii. \_\_\_\_\_

c) State two pieces of equipment used in a basketball game. (2 marks)

- i. \_\_\_\_\_
- ii. \_\_\_\_\_

d) Explain two advantages of effective marking during a basketball game. (2 marks)

- i. \_\_\_\_\_
- ii. \_\_\_\_\_

**QUESTION 4: HANDBALL (7 MARKS)**

a) Draw and label a handball court, showing goal area and centre line. (3 marks)

b) Describe two key stances used when passing the ball. (2 marks)

- i. \_\_\_\_\_
- ii. \_\_\_\_\_

c) State two advantages of accurate passing in handball. (2 marks)

- i. \_\_\_\_\_
- ii. \_\_\_\_\_

**QUESTION 5: FOOTBALL (10 MARKS)**

a) Identify three qualities of a good goalkeeper. (3 marks)

- i. \_\_\_\_\_
- ii. \_\_\_\_\_
- iii. \_\_\_\_\_

b) Describe the correct stance before executing a lofted pass. (2 marks)

\_\_\_\_\_

\_\_\_\_\_

c) Explain two roles of follow-through when kicking the ball. (2 marks)

- i. \_\_\_\_\_
- ii. \_\_\_\_\_



d) State three goalkeeping skills observed during play. (3 marks)

- i. \_\_\_\_\_
- ii. \_\_\_\_\_
- iii. \_\_\_\_\_

**QUESTION 6: NETBALL (9 MARKS)**

a) Name three facilities used in a netball game. (3 marks)

- i. \_\_\_\_\_
- ii. \_\_\_\_\_
- iii. \_\_\_\_\_

b) Identify three types of passes commonly used in netball. (3 marks)

- i. \_\_\_\_\_
- ii. \_\_\_\_\_
- iii. \_\_\_\_\_

c) Explain two safety precautions observed during a netball game. (3 marks)

- i. \_\_\_\_\_
- ii. \_\_\_\_\_
- iii. \_\_\_\_\_

**QUESTION 7: GENERAL FITNESS AND MOVEMENT SKILLS (7 MARKS)**

a) Define the term “follow-through” in ball games. (2 marks)

\_\_\_\_\_

\_\_\_\_\_

b) Explain two benefits of proper dodging techniques in sports. (2 marks)

- i. \_\_\_\_\_
- ii. \_\_\_\_\_

c) Identify three qualities of an effective marker in any ball game. (3 marks)

- i. \_\_\_\_\_
- ii. \_\_\_\_\_
- iii. \_\_\_\_\_

**QUESTION 8: VOLLEYBALL SERVE AND SETTING (6 MARKS)**

a) Identify the types of volleyball serves. (3 marks)

- i. \_\_\_\_\_
- ii. \_\_\_\_\_
- iii. \_\_\_\_\_



b) Describe correct hand placement when performing a set. (2 marks)

i. \_\_\_\_\_

ii. \_\_\_\_\_

c) State one safety precaution when serving in volleyball. (1 mark)

\_\_\_\_\_  
\_\_\_\_\_

**QUESTION 9: SPORTS EQUIPMENT IDENTIFICATION (6 MARKS)**

a) Draw four equipment used in a game of football

b) Name two pieces of protective equipment used in rugby. (2 marks)

i. \_\_\_\_\_

ii. \_\_\_\_\_

**QUESTION 10: SAFETY IN SPORTS (11 MARKS)**

a) State three general safety rules observed in team ball games. (3 marks)

i. \_\_\_\_\_

ii. \_\_\_\_\_

iii. \_\_\_\_\_

b) Explain two ways warm-up exercises prevent injuries. (2 marks)

i. \_\_\_\_\_

ii. \_\_\_\_\_

c) Describe two safety precautions for goalkeepers in football. (2 marks)

i. \_\_\_\_\_

ii. \_\_\_\_\_



d) Outline two safety rules for handball. (2 marks)

i. \_\_\_\_\_

ii. \_\_\_\_\_

e) State two safety measures in rugby. (2 marks)

i. \_\_\_\_\_

ii. \_\_\_\_\_





April 2026

Time: 2 Hours

Code: CKEAB 004

**LEARNER'S DETAILS**

Name: \_\_\_\_\_ School: \_\_\_\_\_

Assessment Number: \_\_\_\_\_ School Code: \_\_\_\_\_ Date: \_\_\_\_\_ Signature: \_\_\_\_\_

**INSTRUCTIONS TO LEARNERS**

1. Answer all questions.
2. Show all working in calculation questions.
3. Use  $g = 10 \text{ m/s}^2$  where necessary.
4. Write neatly and clearly.

**SECTION A (100 MARKS)**

1. a) Define Physics as a branch of science. (2 marks)

---

---

b) Identify four areas of study in Physics. (4 marks)

i. \_\_\_\_\_

ii. \_\_\_\_\_

iii. \_\_\_\_\_

v. \_\_\_\_\_

c) Explain two ways Physics contributes to modern technology. (4 marks)

i. \_\_\_\_\_

ii. \_\_\_\_\_

2. a) Define pressure. (2 marks)

---

---



b) Derive the formula for pressure in liquids. (3 marks)

c) A diver is 5 m below the surface of a lake. Given density of water =  $1000 \text{ kg/m}^3$ .

Calculate:

i) Pressure due to water only. (3 marks)

ii) Total pressure if atmospheric pressure is  $1.0 \times 10^5 \text{ Pa}$ . (2 marks)

3. a) State Pascal's Principle. (2 marks)

---

---

b) A hydraulic lift has two pistons of areas  $0.02 \text{ m}^2$  and  $0.4 \text{ m}^2$ .

If a force of 200 N is applied to the smaller piston, calculate:

i) Pressure produced. (3 marks)



ii) Force exerted by the larger piston. (3 marks)

c) Explain one advantage of hydraulic systems in engineering. (2 marks)

---

---

4. a) Define:

i) Stress (2 marks)

---

---

ii) Strain (2 marks)

---

---

b) A steel wire 1.5 m long extends by 0.003 m under a pulling force.

Calculate the strain. (3 marks)

c) The wire has a cross-sectional area of  $0.0001 \text{ m}^2$  and is pulled by a force of 300 N.

Calculate the stress. (3 marks)



d) Explain why bridges are constructed using steel instead of plastic. (2 marks)

---

---

5. a) State Hooke's Law. (2 marks)

---

---

b) A spring extends by 5 cm when a force of 10 N is applied.

i) Calculate the spring constant. (3 marks)

ii) Determine the extension when a force of 25 N is applied. (3 marks)

6. a) Define temperature. (2 marks)

---

---

b) Convert:

i)  $27^{\circ}\text{C}$  to Kelvin. (2 marks)

ii) 300 K to  $^{\circ}\text{C}$ . (2 marks)



c) A metal rod of length 2 m expands by 0.004 m when heated. Calculate its fractional expansion. (3 marks)

d) Explain why water pipes burst in cold regions during winter. (3 marks)

---

---

---

7. a) Describe anomalous expansion of water. (3 marks)

---

---

---

b) State three practical applications of thermal expansion. (3 marks)

i. \_\_\_\_\_

ii. \_\_\_\_\_

iii. \_\_\_\_\_

8. a) Define moment of a force. (2 marks)

---

---

---

b) State the Principle of Moments. (2 marks)

---

---

---



c) A 50 N force acts at a perpendicular distance of 0.4 m from a pivot.

Calculate the moment produced. (3 marks)

d) A uniform metre rule weighing 10 N is pivoted at the 50 cm mark.

A 20 N weight is placed at the 80 cm mark.

Calculate the position where another weight of 15 N should be placed to keep the rule in equilibrium. (5 marks)

9. a) Define centre of gravity. (1 mark)

---

---

b) Differentiate between stable and unstable equilibrium. (2 marks)

---

---

---

---



c) Explain why buses carrying heavy loads on the roof are less stable. (2 marks)

---

---

---

d) Mention three factors that affect the centre of gravity. (3 marks)

i. \_\_\_\_\_.

ii. \_\_\_\_\_.

iii. \_\_\_\_\_.

10. a) A uniform ladder 4 m long weighs 400 N. It rests horizontally on two supports at its ends.

i) Determine the reaction force at each support. (4 marks)

b) A 1000 N load is carried on a 3 m long uniform beam.  
The beam weighs 300 N and is supported at one end.

i) Calculate the total moment about the support. (4 marks)

ii) Explain why longer beams require stronger supports. (4 marks)



11. Define the following:

a) Force (2 marks)

---

---

b) Pressure (2 marks)

---

---

c) Work (2 marks)

---

---





April 2026

Time: 2 Hours

Code: CKEAB 004



LEARNER'S DETAILS

Name: \_\_\_\_\_ School: \_\_\_\_\_

Assessment Number: \_\_\_\_\_ School Code: \_\_\_\_\_ Date: \_\_\_\_\_ Signature: \_\_\_\_\_

INSTRUCTIONS TO LEARNERS

1. Answer all questions.
2. Show all working in calculation questions.

SECTION A (60 MARKS)

1. a) Define the term Power Mechanics. (2 marks)

---

---

b) Explain two major objectives of studying Power Mechanics in Senior secondary school. (4 marks)

i. \_\_\_\_\_

ii. \_\_\_\_\_

2. a) Identify three career opportunities in the field of Power Mechanics. (3 marks)

i. \_\_\_\_\_

ii. \_\_\_\_\_

iii. \_\_\_\_\_

b) Describe three ethical qualities expected of a professional motor vehicle technician. (3 marks)

i. \_\_\_\_\_

ii. \_\_\_\_\_

iii. \_\_\_\_\_

3. a) Name the inventor of the first practical gasoline-powered automobile and state the year of invention. (2 marks)

Name: \_\_\_\_\_ year: \_\_\_\_\_



b) Explain two limitations of early motor vehicles. (2 marks)

- i. \_\_\_\_\_
- ii. \_\_\_\_\_

c) Discuss two ways mass production transformed the automobile industry. (4 marks)

- i. \_\_\_\_\_
- ii. \_\_\_\_\_

4. a) Differentiate between a two-stroke and a four-stroke engine. (4 marks)

Two stroke engine	Four stroke engine

b) Explain two advantages of modern hybrid engines over conventional petrol engines. (4 marks)

- i. \_\_\_\_\_
- ii. \_\_\_\_\_

5. a) Identify four essential sections found in a well-organized power mechanics workshop. (4 marks)

- i. \_\_\_\_\_
- ii. \_\_\_\_\_
- iii. \_\_\_\_\_
- v. \_\_\_\_\_

b) Explain two reasons why proper workshop layout improves efficiency and safety. (4 marks)

- i. \_\_\_\_\_
- ii. \_\_\_\_\_

6. a) State four general safety rules in a power mechanics workshop. (4 marks)

- i. \_\_\_\_\_
- ii. \_\_\_\_\_
- iii. \_\_\_\_\_
- v. \_\_\_\_\_



b) Explain two consequences of ignoring safety procedures in a workshop. (4 marks)

i. \_\_\_\_\_.

ii. \_\_\_\_\_.

7. a) Describe the function of the following tools: (6 marks)

i) Vernier caliper

\_\_\_\_\_  
\_\_\_\_\_

ii) Micrometer screw gauge

\_\_\_\_\_  
\_\_\_\_\_

iii) Torque wrench

\_\_\_\_\_  
\_\_\_\_\_

b) Explain why precision measuring tools are important in engine assembly. (2 marks)

i. \_\_\_\_\_.

ii. \_\_\_\_\_.

8. a) Classify the following as ferrous or non-ferrous metals: steel, aluminium, copper, cast iron. (4 marks)

Ferrous metals	Nonferrous metals

b) Explain two properties that make aluminium suitable for engine components. (4 marks)

i. \_\_\_\_\_.

ii. \_\_\_\_\_.



**SECTION B (40 MARKS)**

Answer all questions.

**9. a) Define orthographic projection. (2 marks)**

---

---

**b) Explain the importance of accuracy in technical drawing. (3 marks)**

i. \_\_\_\_\_

ii. \_\_\_\_\_

iii. \_\_\_\_\_

**c) Describe two instruments used in mechanical drawing and their uses. (3 marks)**

i. \_\_\_\_\_

ii. \_\_\_\_\_

iii. \_\_\_\_\_

**10. A school plans to establish a new Power Mechanics training workshop.**

**a) Outline four factors to consider when selecting the workshop site. (4 marks)**

i. \_\_\_\_\_

ii. \_\_\_\_\_

iii. \_\_\_\_\_

iv. \_\_\_\_\_

**b) Explain two ways the workshop can promote environmental sustainability. (4 marks)**

i. \_\_\_\_\_

ii. \_\_\_\_\_

**11. a) Explain the function of the following vehicle systems: (4 marks)**

**i) Cooling system**

---

---



**ii) Lubrication system**

---

---

b) Describe two signs that indicate a faulty braking system. (4 marks)

i. \_\_\_\_\_

ii. \_\_\_\_\_

**12. a) Explain two reasons why many countries are encouraging the use of electric vehicles. (4 marks)**

i. \_\_\_\_\_

ii. \_\_\_\_\_

b) Discuss two challenges facing electric vehicle adoption in developing countries. (4 marks)

i. \_\_\_\_\_

ii. \_\_\_\_\_

**13. A mechanic discovers that an engine overheats frequently.**

a) Identify two possible causes of engine overheating. (4 marks)

i. \_\_\_\_\_

ii. \_\_\_\_\_

b) Suggest two preventive maintenance practices to avoid engine overheating. (4 marks)

i. \_\_\_\_\_

ii. \_\_\_\_\_





April 2026

Time: 2 Hours

Code: CKEAB 004



LEARNER'S DETAILS

Name: \_\_\_\_\_ School: \_\_\_\_\_

Assessment Number: \_\_\_\_\_ School Code: \_\_\_\_\_ Date: \_\_\_\_\_ Signature: \_\_\_\_\_

INSTRUCTIONS TO LEARNERS

1. Answer all questions.
2. Show all working in calculation questions.

SECTION A: THEORY (70 Marks)

Answer all questions.

1. a) Define flexibility as a component of health-related fitness. (2 marks)

---

---

---

b) Differentiate between static and dynamic stretching. (2 marks)

---

---

---

---

c) Identify TWO benefits of flexibility exercises for sports performance. (2 marks)

i. \_\_\_\_\_

ii. \_\_\_\_\_



2. a) Define the following: (4 marks)

i) Muscular strength

---

---

ii) Muscular endurance

---

---

b) State TWO activities that develop muscular strength. (2 marks)

i. \_\_\_\_\_

ii. \_\_\_\_\_

c) Outline TWO ways athletes can improvise equipment for strength training using local materials. (2 marks)

i. \_\_\_\_\_

ii. \_\_\_\_\_

3. a) Define cardiovascular endurance. (2 marks)

---

---

b) Give TWO high-impact cardiovascular activities. (2 marks)

i. \_\_\_\_\_

ii. \_\_\_\_\_

c) Outline TWO benefits of cardiovascular exercises for athletes. (2 marks)

i. \_\_\_\_\_

ii. \_\_\_\_\_

d) Identify TWO low-impact cardiovascular activities. (2 marks)

i. \_\_\_\_\_

ii. \_\_\_\_\_



4. a) Define posture. (2 marks)

---

---

b) State THREE movements in sports that require correct posture. (3 marks)

i. \_\_\_\_\_

ii. \_\_\_\_\_

iii. \_\_\_\_\_

c) Outline TWO effects of poor posture on performance. (2 marks)

i. \_\_\_\_\_

ii. \_\_\_\_\_

5. a) Define recreation. (2 marks)

---

---

b) Identify FOUR examples of recreation activities. (4 marks)

i. \_\_\_\_\_

ii. \_\_\_\_\_

iii. \_\_\_\_\_

iv. \_\_\_\_\_

v. \_\_\_\_\_

c) State TWO benefits of recreation activities to health and wellness. (2 marks)

i. \_\_\_\_\_

ii. \_\_\_\_\_

6. a) Define: (4 marks)

i) Acute injury

---

---



ii) Chronic injury

---

---

b) Match the following sports injuries to their common causes: (4 marks)

Sports Injury	Cause
Hamstring strain	
Sprained ankle	
Tennis elbow	
Concussion	

c) Identify TWO strategies athletes use to prevent injuries. (2 marks)

i. \_\_\_\_\_

ii. \_\_\_\_\_

7. a) Give TWO reasons why warm-up exercises are important. (2 marks)

i. \_\_\_\_\_

ii. \_\_\_\_\_

b) Outline THREE principles of training in sports. (3 marks)

i. \_\_\_\_\_

ii. \_\_\_\_\_

iii. \_\_\_\_\_

c) Identify TWO signs of overtraining. (2 marks)

i. \_\_\_\_\_

ii. \_\_\_\_\_

8. a) Identify FOUR components of health-related fitness. (4 marks)

i. \_\_\_\_\_

ii. \_\_\_\_\_

iii. \_\_\_\_\_

iv. \_\_\_\_\_



b) State THREE benefits of maintaining a healthy lifestyle for athletes. (3 marks)

- i. \_\_\_\_\_
- ii. \_\_\_\_\_
- iii. \_\_\_\_\_

9. a) Identify TWO locally improvised sports equipment. (2 marks)

- i. \_\_\_\_\_
- ii. \_\_\_\_\_

b) Outline TWO advantages of using proper sports equipment. (2 marks)

- i. \_\_\_\_\_
- ii. \_\_\_\_\_

c) State ONE safety precaution when using sports equipment. (1 mark)

\_\_\_\_\_.

\_\_\_\_\_.

10. Match the following terms to their correct descriptions:

Terms	Descriptions
Agility	a) Time taken to respond to a stimulus
Balance	b) Ability to move quickly and change direction
Coordination	c) Using senses and body parts to perform movements smoothly
Reaction time	d) Ability to maintain stability while stationary or moving
Speed	e) Ability to move body parts quickly in a straight line

11. Read the following descriptions and identify the correct term or concept:

a) A type of training that involves repeated movements to improve heart and lung efficiency. (1 mark)

\_\_\_\_\_

b) The ability of a muscle to repeatedly exert force over a period of time. (1 mark)

\_\_\_\_\_

c) A sudden physical damage to a body part occurring during a game. (1 mark)

\_\_\_\_\_



d) An activity that helps reduce mental stress and promotes relaxation. (1 mark)

---

e) Maintaining correct alignment of the spine while standing, sitting, or moving. (1 mark)

---





April 2026

Time: 2 Hours

Code: CKEAB 004



LEARNER'S DETAILS

Name: \_\_\_\_\_ School: \_\_\_\_\_

Assessment Number: \_\_\_\_\_ School Code: \_\_\_\_\_ Date: \_\_\_\_\_ Signature: \_\_\_\_\_

INSTRUCTIONS TO LEARNERS

1. Answer all questions.
2. Show all working in calculation questions.

SECTION A (70 Marks)

1. a) Define the following terms: (4 marks)

i) Performing Arts

---

---

ii) Script

---

---

b) State two similarities between live theatre and radio drama. (2 marks)

i. \_\_\_\_\_

ii. \_\_\_\_\_

c) Outline two advantages of film production over stage theatre. (2 marks)

i. \_\_\_\_\_

ii. \_\_\_\_\_



2. Match the performance type in Column A with its correct description in Column B.

Column A	Column B
1. Monologue	A. Performance using exaggerated humor and satire
2. Mime	B. A speech delivered by one character
3. Improvisation	C. Acting without spoken words
4. Satire	D. Unrehearsed acting based on prompts
5. Chorus	E. Group speaking or singing together
6. Soliloquy	F. Character reveals thoughts alone on stage

(6 marks)

3. a) State four characteristics of African community theatre. (4 marks)

- i. \_\_\_\_\_
- ii. \_\_\_\_\_
- iii. \_\_\_\_\_
- iv. \_\_\_\_\_

b) The following descriptions describe certain theatre forms. Identify them: (4 marks)

i) A performance where masked dancers narrate history through movement and drumming.  
\_\_\_\_\_

ii) A modern performance mixing poetry, music, and activism in public spaces. \_\_\_\_\_

iii) A dramatic performance presented in classrooms to teach learners moral lessons. \_\_\_\_\_

iv) A performance recorded and edited before being shown to an audience. \_\_\_\_\_

4. Read the following excerpt carefully.

**Title: “Seeds of Tomorrow”**

*Characters:*

Amani – a determined young activist

Babu – village elder

Neema – a hesitant farmer

*Scene: A village meeting under a large tree.*

Amani: “If we cut every tree for profit today, what shall we breathe tomorrow?”

Neema: “We need money to survive. Trees cannot feed our children.”

Babu: “Both of you speak truth. But survival without wisdom is destruction.”

Amani: “Let us plant twice what we cut.”

Neema: “And who will guide us?”

Babu: “The future belongs to those who protect it.”



a) Identify two themes presented in the excerpt. (2 marks)

i. \_\_\_\_\_

ii. \_\_\_\_\_

b) State one conflict shown in the dialogue. (2 marks)

\_\_\_\_\_

c) Identify the character who acts as a mediator. (1 mark)

\_\_\_\_\_

d) Outline two character traits of Amani. (2 marks)

i. \_\_\_\_\_

ii. \_\_\_\_\_

e) The following description describes a certain dramatic technique:

“A character speaks in a way that represents the voice of the community’s wisdom.” Identify it. (1 mark)

\_\_\_\_\_

f) Suggest two ways this play could educate a community. (2 marks)

i. \_\_\_\_\_

ii. \_\_\_\_\_

5. Read the poem below carefully.

**“Echoes of the Drum”**

*When the drumbeat rises at dawn,  
It calls the village from sleep.  
Feet gather dust from ancient paths,  
Stories awaken from silence deep.*

*Grandmother’s voice rides on rhythm,  
Carrying tales of courage and fear,  
Of warriors who stood like mountains,  
And children who learned to hear.*

*But now the drum competes with engines,  
Its echoes fade in crowded streets.  
Yet in the heart of every youth,  
Its stubborn memory still beats.*

*Will we trade our songs for noise?  
Will we bury our past in haste?  
Or plant new rhythms in the soil,  
Where heritage cannot be erased?*



a) Identify the message from the poem. (2 marks)

---

---

b) Give two symbols used in the poem and explain what they represent. (4 marks)

i. \_\_\_\_\_

ii. \_\_\_\_\_

c) State two challenges facing cultural heritage as suggested in the poem. (2 marks)

i. \_\_\_\_\_

ii. \_\_\_\_\_

d) Identify the poetic device used in the line: “Grandmother’s voice rides on rhythm.” (1 mark)

---

e) Outline two performance techniques suitable for presenting this poem as spoken word. (2 marks)

i. \_\_\_\_\_

ii. \_\_\_\_\_

f) The following description describes a certain tone in the poem:

“A feeling of longing mixed with hope for renewal.” Identify it. (1 mark)

---

6. a) Outline the five stages of plot development in drama. (5 marks)

i. \_\_\_\_\_

ii. \_\_\_\_\_

iii. \_\_\_\_\_

iv. \_\_\_\_\_

v. \_\_\_\_\_

b) The following description describes a certain stage of plot:

“The turning point where tension is highest.” Identify it. (1 mark)

---

c) Give two purposes of dialogue in a play. (2 marks)

i. \_\_\_\_\_

ii. \_\_\_\_\_



7. a) Define spoken word poetry. (2 marks)

---

---

b) State three features of spoken word performance. (3 marks)

- i. \_\_\_\_\_
- ii. \_\_\_\_\_
- iii. \_\_\_\_\_

c) Identify the performance element described below:

“The use of facial expression, tone variation, and gestures to enhance meaning.” (1 mark)

---

---

d) Outline two social issues suitable for spoken word poetry in schools. (2 marks)

- i. \_\_\_\_\_
- ii. \_\_\_\_\_

8. a) Write a six-line dramatic monologue about technology and youth. (6 marks)

---

---

---

---

---

---

---

---

---

---

---

---

b) Identify the form of writing used above. (1 mark)

---

c) Give two ways theatre and poetry can promote national unity. (2 marks)

- i. \_\_\_\_\_
- ii. \_\_\_\_\_



d) The following description describes a certain type of character:  
“A character who changes positively by the end of the story.” Identify it. (1 mark)

---





April 2026

Time: 2 Hours

Code: CKEAB 004



## LEARNER'S DETAILS

Name: \_\_\_\_\_ School: \_\_\_\_\_

Assessment Number: \_\_\_\_\_ School Code: \_\_\_\_\_ Date: \_\_\_\_\_ Signature: \_\_\_\_\_

## INSTRUCTIONS TO LEARNERS

1. Answer all questions.
2. Show all working in calculation questions.

## SECTION A (70 MARKS)

## 1. WOOD MATERIALS AND USES (8 Marks)

a) Define the term **timber-yard**. (2 marks)

---



---

b) Identify two products made from hardwood and two made from softwood. (4 marks)

Hardwood products:

- i) \_\_\_\_\_
- ii) \_\_\_\_\_

Softwood products:

- i) \_\_\_\_\_
- ii) \_\_\_\_\_

c) State two reasons why hardwood is preferred for outdoor furniture. (2 marks)

- i. \_\_\_\_\_
- ii. \_\_\_\_\_

## 2. Match the wood property in Column A with its correct description in Column B. (6 marks)

Column A	Column B
1. Durability	A. Ability to resist wear and decay
2. Workability	B. Ability to bend without breaking
3. Strength	C. Ease of cutting and shaping
4. Elasticity	D. Ability to withstand load
5. Density	E. Mass per unit volume
6. Texture	F. Surface feel of wood grain



**3. a) Outline three methods of converting logs into usable timber. (3 marks)**

- i. \_\_\_\_\_
- ii. \_\_\_\_\_
- iii. \_\_\_\_\_

**b) State two advantages of seasoning timber before use. (2 marks)**

**Advantages**

- i. \_\_\_\_\_
- ii. \_\_\_\_\_

**Disadvantages**

- i. \_\_\_\_\_
- ii. \_\_\_\_\_

**c) The following descriptions describe certain methods. Identify them: (3 marks)**

- i) Timber stacked in open air under a shed for several months. \_\_\_\_\_
- ii) Timber dried in a controlled chamber using heat and airflow. \_\_\_\_\_
- iii) Cutting timber along the growth rings to reduce warping. \_\_\_\_\_

**d) Give two consequences of using unseasoned timber in furniture making. (2 marks)**

- i. \_\_\_\_\_
- ii. \_\_\_\_\_

**4. a) Identify the following parts of a tree trunk: (4 marks)**

- i) The outer protective covering \_\_\_\_\_
- ii) The layer responsible for growth in thickness \_\_\_\_\_
- iii) The older central wood \_\_\_\_\_
- iv) The lighter outer wood \_\_\_\_\_

**b) Outline three stages in the growth of a timber tree from seed to maturity. (3 marks)**

- i. \_\_\_\_\_
- ii. \_\_\_\_\_
- iii. \_\_\_\_\_



c) State two environmental benefits of growing trees. (2 marks)

i. \_\_\_\_\_

ii. \_\_\_\_\_

d) The following description describes a certain tree type:

“A tree that sheds its leaves seasonally and usually produces dense wood.” Identify it. (1 mark)

\_\_\_\_\_

**5.**

a) State four general safety rules in a wood workshop. (4 marks)

i. \_\_\_\_\_

ii. \_\_\_\_\_

iii. \_\_\_\_\_

iv. \_\_\_\_\_

b) Identify three personal protective equipment (PPE) used in wood technology. (3 marks)

i. \_\_\_\_\_

ii. \_\_\_\_\_

iii. \_\_\_\_\_

c) Outline two consequences of careless handling of sharp tools. (2 marks)

i. \_\_\_\_\_

ii. \_\_\_\_\_

d) The following description describes a safety practice:

“Keeping walkways clear and tools arranged properly after use.” Identify it. (1 mark)

\_\_\_\_\_

**6.**

a) Identify two marking tools and two cutting tools used in woodwork. (4 marks)

Marking tool	Cutting tool



b) Match the tool with its function: (4 marks)

Tool	Function
Try square	
Jack plane	
G-clamp	
Tape measure	

Functions:

- Measures long distances
- Checks right angles
- Holds work firmly
- Smoothens wood surfaces

c) State two reasons why correct tool selection is important. (2 marks)

- \_\_\_\_\_.
- \_\_\_\_\_.

7.

a) Outline three methods of maintaining hand tools. (3 marks)

- \_\_\_\_\_.
- \_\_\_\_\_.
- \_\_\_\_\_.

b) Give two reasons why tools should be stored in a dry place. (2 marks)

- \_\_\_\_\_.
- \_\_\_\_\_.

c) Identify the maintenance practice described below:

“Applying oil to metallic parts after cleaning.” (1 mark)

\_\_\_\_\_

d) State two dangers of using blunt cutting tools. (2 marks)

- \_\_\_\_\_.
- \_\_\_\_\_.

8.

a) Define entrepreneurship in relation to wood technology. (2 marks)

\_\_\_\_\_  
\_\_\_\_\_



b) Identify two careers related to wood technology. (2 marks)

- i. \_\_\_\_\_
- ii. \_\_\_\_\_

c) Outline two ways wood technology contributes to community development. (2 marks)

- i. \_\_\_\_\_
- ii. \_\_\_\_\_

d) The following description describes a certain professional:  
“A skilled person who designs and makes furniture from wood.” Identify it. (1 mark)

\_\_\_\_\_

e) Give one reason why studying wood technology can reduce unemployment. (1 mark)

\_\_\_\_\_  
\_\_\_\_\_

**9.**

A school plans to establish a small furniture production unit.

a) Outline three factors to consider before starting the workshop. (3 marks)

- i. \_\_\_\_\_
- ii. \_\_\_\_\_
- iii. \_\_\_\_\_

b) State two machines that may be required in a modern wood workshop. (2 marks)

- i. \_\_\_\_\_
- ii. \_\_\_\_\_

c) Explain two economic challenges that may affect the wood business. (2 marks)

- i. \_\_\_\_\_
- ii. \_\_\_\_\_

d) The following description describes a certain business concept:  
“Producing goods in large quantities to reduce cost per unit.” Identify it. (1 mark)

\_\_\_\_\_



e) Suggest two sustainable practices in wood production. (2 marks)

- i. \_\_\_\_\_.
- ii. \_\_\_\_\_.



April 2026

Time: 2 Hours

Code: CKEAB 004



LEARNER'S DETAILS

Name: \_\_\_\_\_ School: \_\_\_\_\_

Assessment Number: \_\_\_\_\_ School Code: \_\_\_\_\_ Date: \_\_\_\_\_ Signature: \_\_\_\_\_

INSTRUCTIONS TO LEARNERS

- i. Answer **all questions**.
- ii. Show all working clearly.
- iii. Use mathematical tables or a calculator where necessary.

CORE MATHEMATICS (100 MARKS)

1. Solve for  $x$ : (3 marks)

$$4^{x+1} \times 2^{2x-3} = 512$$

2. Use logarithms to evaluate: (3 marks)

$$\frac{2.735 \times 0.0846}{0.693}$$



3. Solve without using tables: (3 marks)

$$\log(2x + 5) + \log 3 = \log(x + 11)$$

4. The length of a rectangular hall is  $(x + 4)$  m and the width is  $(x - 3)$  m.  
If its area is  $77 \text{ m}^2$ , find its dimensions. (3 marks)

5. A sphere, a cone and a cylinder have equal radii. Their curved surface areas are equal.

If the volume of the sphere is  $1437 \text{ cm}^3$ :

- a) Find the radius of the sphere. (3 marks)
- b) Find the volume of the cylinder. (4 marks)
- c) Find the volume of the cone. (3 marks)

(Give answers to 4 significant figures)



6. The table shows marks scored by students:

Marks	0–10	11–20	21–30	31–40	41–50
Frequency	5	18	32	25	10

a) Calculate the mean mark. (4 marks)

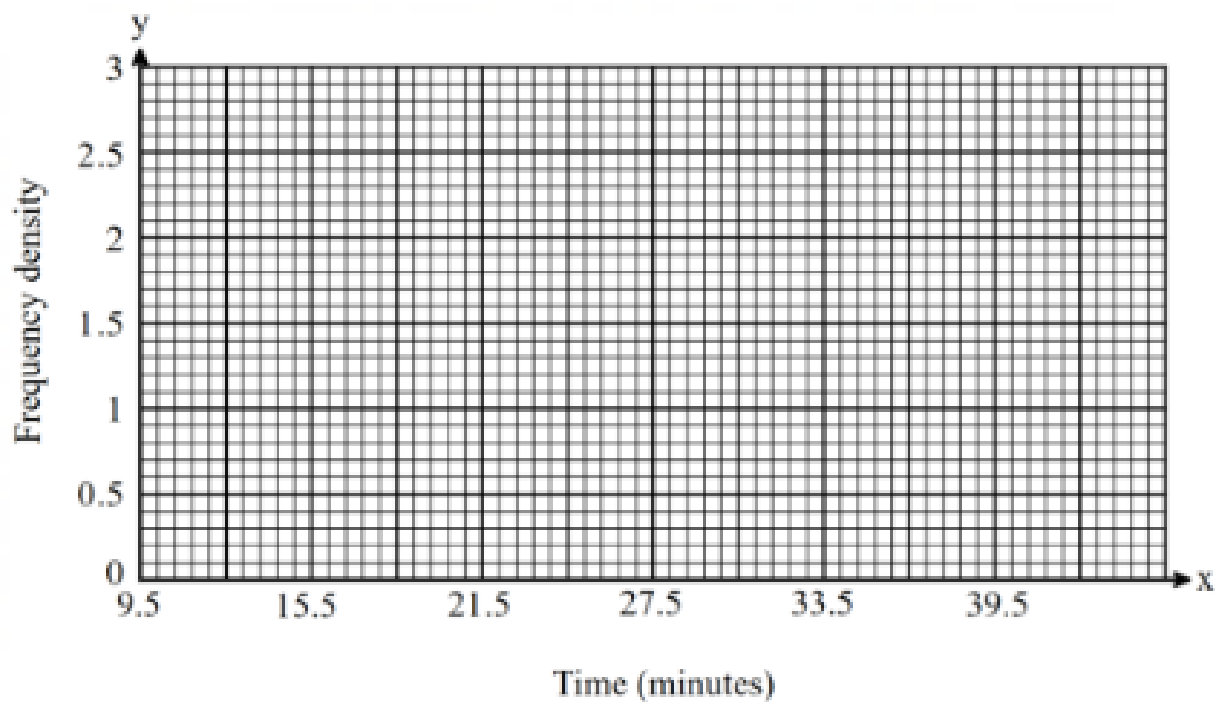
b) The table below shows time in minutes that a group of 45 students took to complete a mathematics test.

10	25	24	22	35	17	32	20	13	30	21	16	34	24	13
35	23	38	26	11	14	32	37	29	37	37	22	17	35	20
37	38	18	14	32	34	28	11	19	31	15	22	15	38	19

(i) From the given data, complete the frequency distribution table below. (2 marks)



(ii) Using the frequency distribution table in (a) above, draw a histogram to represent the data. (3 marks)



(c) From the histogram, estimate the:

(i) Median time in minutes. (3 marks)

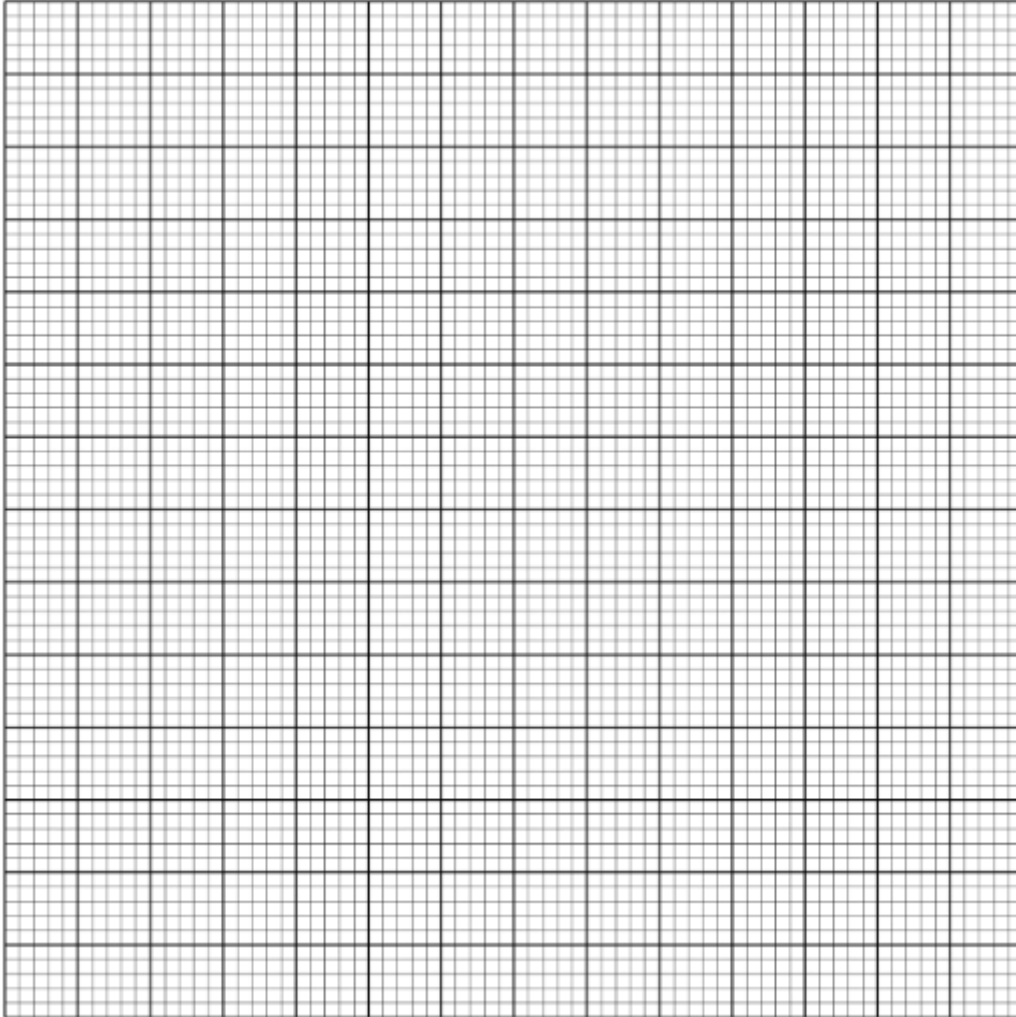
(ii) Number of students that spent from 21.5 minutes to 36.5 minutes. (2 marks)



7. Solve the following simultaneous equations using graphical method. (4 mks)

$$3x - 2y = 7$$

$$2x - y = 7$$



8. Find the area of a triangle with sides 8 cm, 10 cm and 12 cm.

(Use Heron's formula) (3 marks)



9. A trader spent  $\frac{2}{5}$  of his money on stock and  $\frac{3}{4}$  of the remainder on transport.

He remained with Ksh 9,000.

Find the amount spent on transport. (3 marks)

10. Solve: (3 marks)

$$5^{x+2} = 125^{x-1}$$

11. Two similar cones have volumes  $864 \text{ cm}^3$  and  $256 \text{ cm}^3$ .(4 marks)

If the curved surface area of the smaller cone is  $200 \text{ cm}^2$ , find that of the larger cone.



12. A piece of wire leaves a remainder of 5 cm when divided into pieces of 18 cm, 24 cm or 30 cm.

Find the length of the wire. (3 marks)

13. Using a ruler and a pair of compasses only.

(i) Construct line  $AB = 6\text{cm}$ . (1 mark)

(ii) Construct triangle  $DAB$  where angle  $DAB = 75^\circ$  and  $AB = BD$ . (2 marks)

(iii) Complete the parallelogram  $ABCD$ . (1 mark)

(iv) Drop a perpendicular from  $A$  to  $BD$  and hence find the area of the parallelogram. (3 marks)

(v) Construct a circle to touch line  $BC$ ,  $AB$  produced and  $DC$  produced. Measure its radius. (3 marks)



14. Two towns are 60 km apart. James leaves Town A at 8.00 a.m. travelling at 20 km/h. Peter leaves Town B at 9.00 a.m. travelling at 30 km/h towards James.

a) How long after 8.00 a.m. do they meet? (2 marks)

b) At what time do they meet? (1 mark)

15. Simplify completely: (3 marks)

$$\frac{(a + 3b)^2 - (a - 3b)^2}{6ab}$$

16. Use logarithms to evaluate: (3 marks)

$$\frac{58.72 \times 406}{0.845}$$



17. Mwangi mixed the following materials as follows:

*Cement : Sand = 2 : 5*

*Sand : Ballast = 3 : 7*

a) Find the ratio Cement : Ballast. (2 marks)

b) If 35 bags of sand are used, how many bags of cement are required? (2 marks)

c) A bag of cement costs Ksh 720, sand Ksh 150 and ballast Ksh 110. Find cost of the mixture. (3 marks)

d) A lorry carries 4 tonnes per trip and charges Ksh 9,500 per trip. How much will it cost to transport 28 tonnes? (3 marks)



18. a) Calculate the gradient of the line passing through the points: A(2, 3) and B(6, 11). (2 marks)

b) Find the gradient of the line joining the points P(-4, 5) and Q(2, -7). (2 marks)

19. a) Find the equation of the straight line passing through the points (1, 4) and (5, 12).

Give your answer in the form  $y = mx + c$ . (2 marks)

b) Determine the equation of the line that passes through the point (3, -2) and is parallel to the line  $y = 4x + 1$ . (2 marks)

c) Find the equation of the line that passes through the point (2, 5) and is perpendicular to the line  $y = 3x - 4$ . (2 marks)



20. a) Round 48.376 to:

i) 1 decimal place

ii) 2 significant figures (1 mark)

b) A length is measured as 25 cm correct to the nearest cm. State the maximum possible error. (1 mark)

21. The actual length of a rod is 50 cm. It was measured as 48 cm. Calculate the percentage error. (2 marks)

22. Two aeroplanes S and R leave an airport at the same time. S flies on the bearing of  $240^\circ$  at 750Km/h while R flies due East at 600Km/hr.

a.

i. Calculate the distance of each aeroplane after 30minutes



ii. Using a scale of 1cm to represent 50km make an accurate scale drawing to show the positions of the aeroplanes after 30minutes

b.

i. Use the scale drawing to find the distance between the two aeroplanes after 30minutes

ii. If each aeroplane landed after 30minutes and S received a signal to join R in 45minutes. Find its speed.

c. Determine the bearing of:

i. S from R: \_\_\_\_\_

ii. R from S: \_\_\_\_\_







Homework

*Empowering Learners, Building Competence,  
Shaping the Future!*

COMPETENCE EDUCATION GROUP