

PRIMARY SCHOOL EDUCATION ASSESSMENT

AUGUST HOLIDAY ACTIVITIES 2026

GRADE 4 – SCIENCE AND TECHNOLOGY ACTIVITIES

Time: 1 Hour 30 Minutes



LEARNER'S DETAILS

Name: \_\_\_\_\_ . School: \_\_\_\_\_

Assessment Number: \_\_\_\_\_ . Date: \_\_\_\_\_

School Code: \_\_\_\_\_ . Signature: \_\_\_\_\_

Instructions for Learners

1. Write your name, school name, and assessment number in the spaces provided.
2. This paper consists of 30 questions.
3. Check the question paper carefully to ensure all pages are printed and no questions are missing.
4. Answer all the questions in the spaces provided.

FOR EXAMINER'S USE

SECTION	SECTION A	SECTION B	% SCORE	EE1	EE2	ME1	ME2	AE1	AE2	BE1	BE2
SCORE RANGE	15 MARKS	25 MARKS		90-100	75-89	58-74	41-57	31-40	21-30	11-20	1-10
	POINTS			8 POINTS	7 POINTS	6 POINTS	5 POINTS	4 POINTS	3 POINTS	2 POINTS	1 POINT
LEARNER'S TOTAL SCORE											

Answer ALL questions in this section

A grade 4 learner saw the part of a plant shown below.



Use it to answer questions 1-3.

1. What is the name of the part shown?
  - A. roots      B. leaves
  - C. stem      D. flowers
2. The following are functions of the part of the plant shown. Which one is NOT?
  - A. It stores food for some plants.
  - B. It absorbs water and mineral salts from the soil.
  - C. It supports the plant in the soil.
  - D. It makes food for the plant.

3. One of the following plants stores its food in the part shown on the diagram. Which one is it?
  - A. Sugarcane
  - B. Kales
  - C. Mango
  - D. Carrots
4. Grade 4 learners were asked to name non-decomposable waste. Who gave the correct answer?
  - A. CALEB : Animal waste
  - B. DANIEL : Fruit peelings
  - C. KARO : Plant remains
  - D. JACKSON : Plastics
5. Which of the following is not a characteristic of plants?
  - A. They grow
  - B. They eat
  - C. They reproduce
  - D. They die

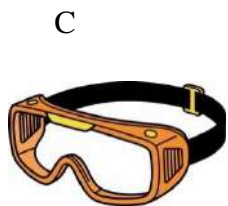
6. \_\_\_\_\_ are waste that can rot easily.

- A. Decomposable waste
- B. Non-decomposable waste
- C. Modern waste
- D. E-waste

7. What is the meaning of invertebrates?

- A. They are big animals.
- B. They are animals with a backbone.
- C. They are animals without a backbone.
- D. They are small animals.

8. Juma, a grade 4 learner, wanted to use the following items when handling plants. Which of the items can be used to protect the eyes?



9. The food pipe is also known as .

- A. gut
- B. oesophagus
- C. windpipe
- D. ileum

10. Kelvin was walking around the school compound. He saw a gecko basking in the sun as shown below.



From what Kevin observed, we can say that;

- A. animals move
- B. animals reproduce
- C. animals respond to changes in the environment
- D. animals remove waste

11. The following are causes of death among animals except;

- A. diseases
- B. lack of food and water
- C. accidents
- D. lack of shelter

12. The following are signs and symptoms of unhealthy digestive system. Which one is NOT?

- A. Diarrhoea
- B. Vomiting
- C. Deworming
- D. Constipation

13. Kanana was asked by a friend to name a vertebrate. What would you expect her to say?

- A. a snail
- B. a jellyfish
- C. a spider
- D. a lizard

14. Some grade 4 learners were asked by their teacher to write the meaning of matter. They gave their answers as shown.

**CHARITY:** It is anything that we can see and hold.

**ZABLON:** It is anything that has no shape nor volume.

**CHARLES:** It is anything that has mass and occupies space.

**ALPHONCE:** It is anything that has shape and colour.

Who wrote the correct answer?

- A. ALPHONCE
- B. CHARITY
- C. ZABLON
- D. CHARLES

15. Gladys has an unhealthy digestive system. Her tummy feels full and swollen. It is likely that she has;

- A. stomach-ache
- B. a bloated stomach
- C. diarrhoea
- D. constipation

16. It is TRUE that solids;

- A. take the shape of the container
- B. have indefinite mass
- C. have definite volume
- D. have indefinite shape

17. Which one of the following is a solid waste?

- A. Dirty water
- B. Broken glass
- C. Smoke
- D. Exhaust fumes

18. Digestion starts in the mouth and ends in the .

- A. small intestines
- B. rectum
- C. anus
- D. large intestines

19. One of the following practices shows reducing solid waste. Which one is it?

- A. Buying items packaged in bulk to avoid a lot of wrapping papers
- B. Using old newspapers to make tissue paper
- C. using the same shopping bag every time we go to the market
- D. Using waste bottle to make a toy car

20. Green plants make their own food through a process called

- A. digestion
- B. photosynthesis
- C. respiration
- D. circulation

21. In managing solid waste, we can use the same item several times or for a different purpose. This is known as;

- A. reducing
- B. reusing
- C. recycling
- D. replacing

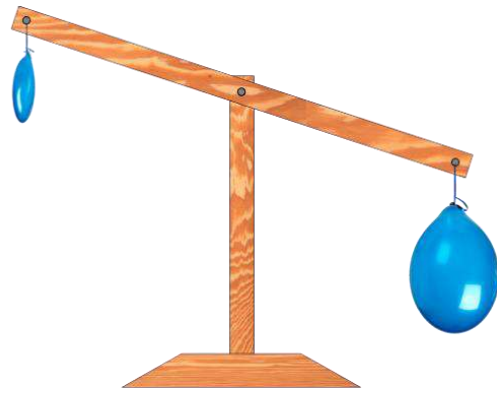
22. Which of the following is an example of liquids?

- A. water vapour
- B. ice
- C. juice
- D. oxygen

23. Tylin was asked to write the meaning of waste. She was likely to write that waste is;

- A. anything that has never been used
- B. anything that is not used by many people
- C. anything that is hard to use
- D. anything that we no longer need

24. Grade 4 learners carried out the experiment shown below.



From the experiment, it can concluded that gases;

- A. have shape
- B. have volume
- C. have colour
- D. have mass

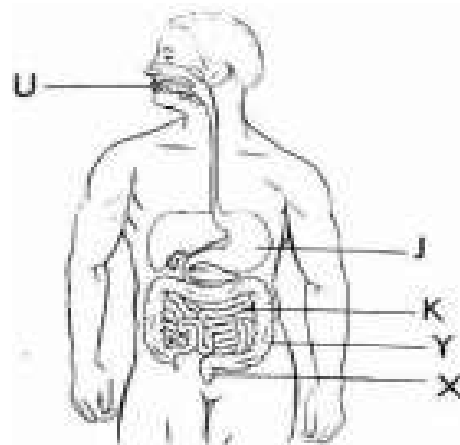
25. Dental hygiene is one of the ways of having a healthy digestive system. Which of the following is a way of taking care of our teeth?

- A. Brushing our teeth at least twice a day
- B. Opening a soda bottle with our teeth
- C. Sharing toothbrush with our friends
- D. Eating sugary foods

26. Which of the following is NOT an example of gases?

- A. smoke
- B. steam
- C. air
- D. stones

27. Answer questions 27-30.



The part labelled J is known as .

- A. Gullet
- B. Stomach
- C. Food pipe
- D. Pancreas

28. The part of the human digestive system that is long, narrow and called marked K is called the .

- A. large intestine
- B. rectum
- C. liver
- D. small intestines

29. The symptom of unhealthy digestive system known as constipation is felt on part .

- A. K
- B. J
- C. Y
- D. X

30. Digestion of food starts in the part marked .

- A. U
- B. J
- C. K
- D. X

## ANSWERS

1. A
2. D
3. D
4. D
5. B
6. A
7. C
8. C
9. B
10. C
11. C
12. C
13. D
14. D
15. B
16. C
17. B
18. A
19. A
20. B
21. B
22. C
23. D
24. D
25. A
26. D
27. B
28. D
29. B
30. A